

JOFFREY ★ BALLET

CHICAGO

ASHLEY WHEATER  
ARTISTIC DIRECTOR

PREVIEW PERFORMANCES

CHRISTOPHER WHEELDON'S  
NUTCRACKER

DECEMBER 1-4, 2016



 HANCHER AUDITORIUM  
OPENING SEASON 2016/2017

Great Artists. Great Audiences.  
**Hancher Performances.**



WILLIAM G. NUSSER, JR.

Charles Swanson and staff  
Hancher Auditorium  
1 East Park Road  
Iowa City, IA 52242

Dear Chuck and the Hancher Staff,

Congratulations on the opening of the new, Cesar Pelli-designed Hancher Auditorium. It is truly a spectacular design and quite clearly a labor of love. Enclosed is our ad for the inside front cover of your program. Lazare Diamonds and Hands Jewelers are proud to be a part of your new building, your new season and your glorious future. We are proud to be a part of your brilliant future, providing performance experiences of their lives.

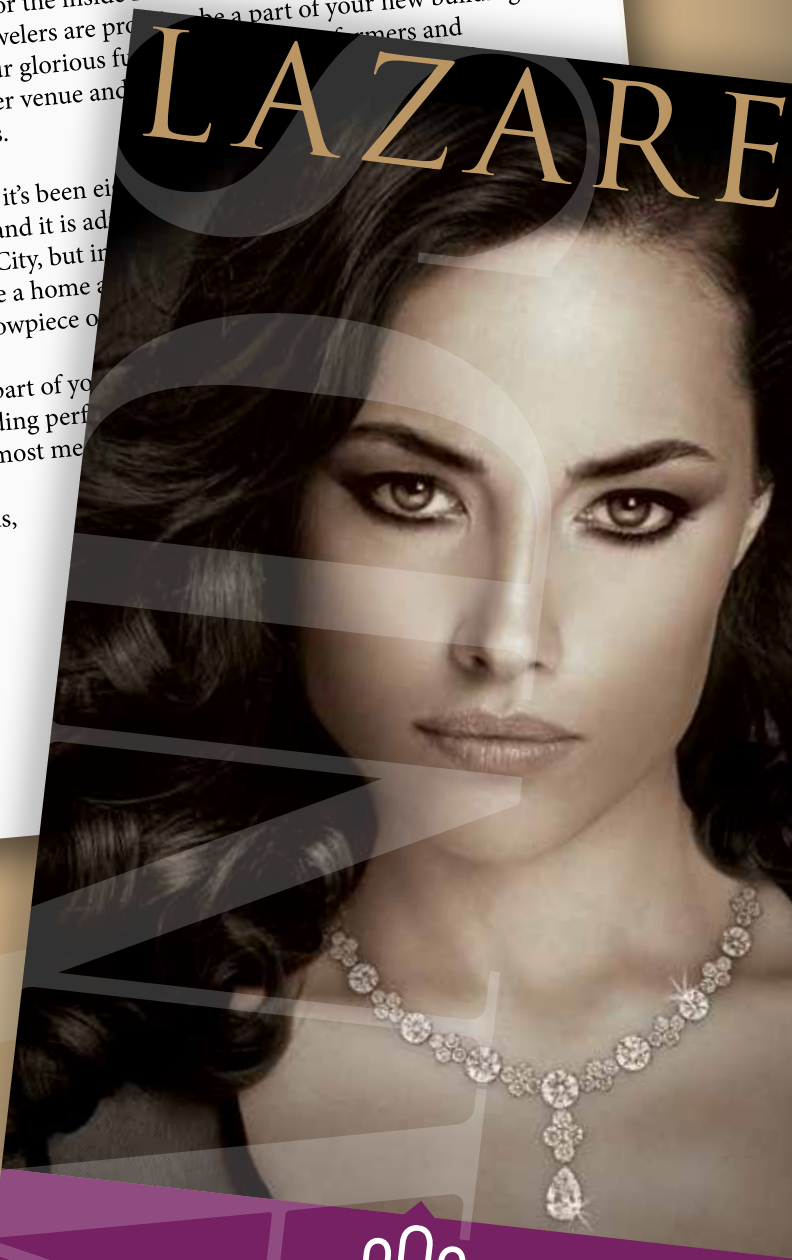
It is hard to believe that it's been eight years since the performing arts venue and it is alive, not only in Iowa City, but in the state! And now we have a home for a brilliantly designed showpiece of architecture.

We are proud to be a part of your brilliant future, providing performance experiences of their lives.

With warmest regards,

Bill

# LAZARE



Iowa's Oldest Jewelry Store

**HANDS**  
JEWELERS

SINCE 1854

109 EAST WASHINGTON STREET • DOWNTOWN IOWA CITY

319-351-0333 • 800-728-2888

WWW.HANDSJEWELERS.COM

FACEBOOK.COM/HANDS JEWELERS

@HANDSJEWELERS

# JOFFREY ★ BALLET

CHICAGO

## ASHLEY WHEATER

ARTISTIC DIRECTOR

## GREG CAMERON

EXECUTIVE DIRECTOR

## ROBERT JOFFREY

FOUNDER

## GERALD ARPINO

FOUNDER

### ARTISTS OF THE COMPANY

MATTHEW ADAMCZYK DERRICK AGNOLETTI YOSHIHISA ARAI  
AMANDA ASSUCENA ARTUR BABAJANYAN EDSON BARBOSA  
MIGUEL ANGEL BLANCO ANAIS BUENO FABRICE CALMELS  
RAÚL CASASOLA VALERIIA CHAYKINA NICOLE CIAPPONI  
LUCIA CONNOLLY APRIL DALY FERNANDO DUARTE  
CARA MARIE GARY STEFAN GONCALVEZ LUIS EDUARDO GONZALEZ  
DYLAN GUTIERREZ RORY HOHENSTEIN ANASTACIA HOLDEN  
DARA HOLMES RILEY HORTON VICTORIA JAANI  
HANSOL JEONG GAYEON JUNG YUMI KANAZAWA  
BROOKE LINFORD GRAHAM MAVERICK JERALDINE MENDOZA  
JACQUELINE MOSCICKE AARON RENTERIA CHRISTINE ROCAS  
PAULO RODRIGUES CHLOÉ SHERMAN TEMUR SULUASHVILI  
OLIVIA TANG-MIFSUD ALONSO TEPETZI ELIVELTON TOMAZI  
ALBERTO VELAZQUEZ MAHALLIA WARD  
JOANNA WOZNIAK JOAN SEBASTIÁN ZAMORA

## SCOTT SPECK

MUSIC DIRECTOR

## GERARD CHARLES

DIRECTOR OF ARTISTIC OPERATIONS

## NICOLAS BLANC

BALLET MASTER/PRINCIPAL COACH

## ADAM BLYDE

## SUZANNE LOPEZ

BALLET MASTERS

## PAUL JAMES LEWIS

SENIOR PIANIST/MUSIC ADMINISTRATOR

## GRACE KIM

## MATTHEW LONG

COMPANY PIANISTS

Patrons are requested to turn off pagers, cellular phones,  
and signal watches during performances.

The taking of photographs and the use of recording  
devices are not allowed.

Artists subject to change.







HANCHER 2016/2017  
SEASON SPONSOR

## WEST MUSIC

HANCHER SPONSORS  
OF *THE NUTCRACKER*

SUE STRAUSS

RICHARD AND MARY JO STANLEY

ANONYMOUS FAMILY FOUNDATION

LEONARD AND MARLENE HADLEY

HERBERT A. AND JANICE A. WILSON

DOUGLAS AND LINDA PAUL

GARY A. AND LADONNA K. WICKLUND

OPN ARCHITECTS, INC.

IOWA HOUSE HOTEL





*Give the gift  
of music this  
holiday season!*



[westmusic.com](http://westmusic.com)

Cedar Falls • Cedar Rapids • Coralville  
Decorah • Des Moines • Dubuque • Quad Cities

# THE NUTCRACKER

## BY CHRISTOPHER WHEELDON

Choreography ©  
**CHRISTOPHER WHEELDON**

Music  
**PETER ILYICH TCHAIKOVSKY**  
*Act I Party Scene music arranged by Ljova*

Story Adaptation  
**BRIAN SELZNICK**

Set and Costume Design  
**JULIAN CROUCH**

Lighting Design  
**NATASHA KATZ**

Puppetry  
**BASIL TWIST**

Projection Design  
**BENJAMIN PEARCY**

Choreographer's Assistant  
**JACQUELIN BARRETT**

Children's Ballet Masters  
**SUZANNE LOPEZ** and **GRACE SNIDER**

Assistant Scenic Designer  
**FRANK MCCULLOUGH**

Assistant Lighting Designer  
**JON GOLDMAN**

Masks created by  
**JULIAN CROUCH**

Puppetry and Effects  
**TANDEM OTTER PRODUCTIONS**

Lighting and video equipment supplied by  
**PRG**



### **PREVIEW PERFORMANCES**

The Joffrey Ballet, December 1-4, 2016  
Hancher Auditorium, The University of Iowa, Iowa City, IA

### **WORLD PREMIERE**

The Joffrey Ballet, December 10, 2016  
Auditorium Theatre, Chicago, IL



# SYNOPSIS

## ACT I

It is Christmas Eve in Chicago, 1892. Workers from around the world are constructing the Chicago Columbian World's Exposition, which will open in five months. Marie, the daughter of one of the workers, encounters a gang of boys on the construction site who show off things they've stolen. Marie's younger brother Franz steals a small red bundle from a rich boy's sled, and a Rat Catcher terrifies Franz.

Marie and Franz return to their home, a little shack where their mother, a sculptress, is creating a great golden statue, which will preside over the fair.

Workers from the fair and their families soon arrive at the shack with decorations, a small tree, and much food and drink. Following a Polish tradition, they wait for the first star of the evening to appear, then a wonderful Christmas party begins.

The man who has designed and created the World's Fair, a mysterious figure known as the Great Impresario, surprises everyone and shows up, along with his apprentice (the rich boy from whom Franz stole the red bundle earlier). The Great Impresario entertains the workers with an enchanting vision of his fair.

The Rat Catcher catches a mouse and throws it into the red-hot stove. The Great Impresario distributes gifts for everyone, but one is missing. Franz realizes it's the red bundle he'd stolen. The Great Impresario produces it like a magic trick and gives it to Marie. She unwraps it and discovers a beautiful nutcracker inside. Just then, the Rat Catcher frightens Franz, who bumps into Marie, causing her to break the nutcracker. It is swiftly fixed by the Great Impresario, but the party is now winding to a close and soon everyone leaves.

That night something very strange happens. Marie awakens and is shocked to see mice kidnap Franz! The Great Impresario returns, and with a wave of his hand, the little tree from the party grows until it seems to have taken over the entire world. The Nutcracker, now life-size and alive, appears from within its branches. The Rat King leads a battle against the Nutcracker. Marie distracts the Rat King and the Nutcracker kills him, but not before being injured himself.

Franz is rescued, and the mice carry off their king, vowing revenge. The Nutcracker is transformed into Prince Peter. It begins to snow. A magical gondola comes to take the Great Impresario, the Prince, and Marie off into the night.

## ACT II

The gondola delivers the Great Impresario, the Prince, and Marie to the edge of a lake, where they are greeted by the Queen of the Fair, a vision in gold. The Queen grants them a visit to the Dream Fair. They move from pavilion to pavilion, where countries from around the world are represented. Soon the Great Impresario and the Queen of the Fair have fallen in love, which causes the Dream Fair to explode with light.

Marie wakes up from her dazzling dream. It is Christmas Day.

# ABOUT THE ARTISTS

## **ASHLEY WHEATER** ARTISTIC DIRECTOR

Born in Scotland and raised in England, Mr. Wheeler was trained at the Royal Ballet School. Mr. Wheeler began his professional career with The Royal Ballet, and danced at the London Festival Ballet, The Australian Ballet, The Joffrey Ballet, and San Francisco Ballet. In 1997, he became Ballet Master at San Francisco Ballet, and in 2002, Assistant to the Artistic Director.



In 2007, Mr. Wheeler was appointed Artistic Director of The Joffrey Ballet. New work is the life blood of a company, and he has introduced numerous premieres to the repertoire. In 2008, the Boeing Corporation recognized his commitment to community outreach and diversity in the world of dance, presenting him the “Game Changer” award. In 2010, Mr. Wheeler, representing The Joffrey Ballet, was named Lincoln Academy Laureate, the highest honor presented by the State of Illinois. The *Chicago Tribune* selected Mr. Wheeler as 2013 “Chicagoan of the Year” for his contributions to dance. In 2014, Mr. Wheeler accepted the Chicago Spirit of Innovation Award for The Joffrey Ballet and in 2015, he received the University of Chicago Rosenberger Medal for Outstanding Achievement in the Creative and Performing Arts. He also serves as the Artistic Director of the Joffrey Academy of Dance, the Official School of The Joffrey Ballet.

## **SCOTT SPECK** MUSIC DIRECTOR

Scott Speck has inspired international acclaim as a conductor of passion, intelligence, and winning personality. He is the Artistic Director of the Chicago Philharmonic and Music Director of the Mobile (AL) and West Michigan Symphony orchestras. He has led major orchestras at London’s Royal Opera House, the Paris Opera, Washington’s Kennedy Center, San Francisco’s War Memorial Opera House, and the Los Angeles Music Center.



He has been Conductor of the San Francisco Ballet, Music Advisor/Conductor of the Honolulu Symphony, and Associate Conductor of the Los Angeles Opera. He was named Principal Guest Conductor of the China Film Philharmonic in Beijing.

Scott Speck is the co-author of three of the world’s best-selling books on classical music and dance: *Classical Music for Dummies*, *Opera for Dummies*, and *Ballet for Dummies*. These books have been translated into twenty languages and are available around the world.

A Fulbright scholar and summa cum laude graduate of Yale, Scott is a regular commentator on NPR, the BBC, ABC Australia, and Voice of Russia. He has been featured in TED talks and at the Aspen Ideas Festival. His writing appears in numerous magazines and journals.

Follow Scott Speck at [scottspeck.org](http://scottspeck.org), [Facebook.com/ConductorScottSpeck](https://www.facebook.com/ConductorScottSpeck), and [@scottspeck1](https://twitter.com/scottspeck1) on Twitter.

## CHRISTOPHER WHEELDON

### CHOREOGRAPHER

Christopher Wheeldon, director and choreographer, trained at The Royal Ballet School and joined The Royal Ballet in 1991.



Wheeldon joined New York City Ballet in 1993 and was promoted to Soloist in 1998. He served as NYCB's first-ever Artist in Residence in 2000/01 and was named NYCB's first Resident Choreographer in July 2001.

He has created productions for all the world's major ballet companies including: New York City Ballet, The Royal Ballet, American Ballet Theatre, San Francisco Ballet, Pennsylvania Ballet, Dutch National Ballet, Royal Swedish Ballet, Bolshoi Ballet, and National Ballet of Canada.

In 2007, Wheeldon founded Morphoses/The Wheeldon Company and was appointed an Associate Artist for Sadler's Wells Theatre in London.

For the Metropolitan Opera, he choreographed *Dance of the Hours* for *La Gioconda* (2006) and Richard Eyre's production of *Carmen* (2012), as well as ballet sequences for the feature film *Center Stage* (2000) and *Sweet Smell of Success* on Broadway (2002).

In 2014 he directed and choreographed the musical version of *An American In Paris* which premiered in Paris in 2014 at the Chatelet Theatre. The Broadway production premiered at the Palace Theatre on April 12, 2015 and won Wheeldon the 2015 Tony Award® for Best Choreography and Outer Critics Award for Best Choreography and Direction.

Awards include the Martin E. Segal Award from Lincoln Center, the American Choreography Award, a *Dance Magazine* Award, and the London Critic's Circle Award for best new ballet for *Polyphonia*. In 2013 and 2015, his productions of *Cinderella* and *The Winter's Tale* won the Benois de la Danse. He was an Olivier award winner for *Aeternum* and for *The Winter's Tale*, the 2014 Leonard Massine Prize for choreography. He was awarded an OBE in the 2016 New Year's Honours.

In February 2016, The Royal Ballet premiered an All-Wheeldon triple bill including the world premiere of *Strapless*, based on the scandal surrounding the Anthony Sargent portrait of Madam X. He was the Artistic Director for Les Arts Decoratifs' *Fashion Forward* exhibit in Paris and the National Tour of *An American In Paris*.

## BRIAN SELZNICK

### STORY ADAPTATION

Brian Selznick is the author and illustrator of many books for children, including *The Invention of Hugo Cabret*, winner of the Caldecott medal and the basis for the Oscar-winning movie *Hugo*, directed by Martin Scorsese. His best-selling book *Wonderstruck* is soon to be a major motion picture directed by Todd Haynes (with a screenplay by Brian), starring Julianne Moore. His newest book, *The Marvels*, was published in 2015. Other books include illustrations for *Frindle*, by Andrew Clements, *Amelia and Eleanor Go For a Ride* by Pam Muñoz Ryan, and the *Doll People* trilogy by Ann Martin and Laura Godwin. Brian is also a puppeteer, having performed in the original casts of Basil Twist's *Symphonie Fantastique* and





*Petrushka*. He is currently working on several new books, and he's writing a musical commissioned by the La Jolla Playhouse based on his first book, *The Houdini Box*, with composer Dan Moses Schreier. He lives with his husband, Dr. David Serlin, in San Diego, California and Brooklyn, New York.

## JULIAN CROUCH

SET, COSTUME, AND MASK DESIGN

Originally from the UK, Julian Crouch is a Brooklyn-based theatre practitioner, artist, musician, known for his groundbreaking production of *Shockheaded Peter*, *Satyagraha* at the Met Opera, and the Tony®-nominated set of *Hedwig and The Angry Inch*.

A co-founder and former artistic director of Improbable, a UK-based theatre company, his shows have been seen throughout the world. He is particularly known for his incorporation of large scale, live animation within his productions. He has worked extensively at the Met Opera and on Broadway in addition to a myriad of more unusual locations.



Crouch is currently designing and directing the Metropolitan Opera's 50<sup>th</sup> Anniversary Gala, designing *Hansel and Gretel* for La Scala, Milan, *King Arthur* for the Berlin Staatsoper, and *Marnie* for the ENO and the Met Opera. Together with Saskia Lane, he is internationally touring *Birdheart*—an intimate chamber piece of animated theatre, which has recently played in Taiwan, and in Brussels for the Dalai Lama.

He has illustrated two books—*Jedermann* and *Maggot Moon*.

## NATASHA KATZ

LIGHTING DESIGNER

Natasha Katz has a long-standing creative relationship with Christopher Wheeldon and, prior to *Nutcracker*, has collaborated with him on a number of ballets, including *Tryst* (2002), *Alice's Adventures in Wonderland* (2011), and *The Winter's Tale* (2014), all of which premiered at the Royal Ballet where he is Artistic Associate. Ms. Katz's other collaborations with Mr. Wheeldon include *Continuum* (San Francisco Ballet, 2002), *Carnival of the Animals* and *An American in Paris* (New York City Ballet), *Swan Lake* (Pennsylvania Ballet, 2004), and the premiere of *An American in Paris* at Théâtre Châtelet (2014) and on Broadway (2015), for which she won a Tony Award. Ms. Katz's Broadway credits include *Long Day's Journey Into Night* (Tony Award), *Skylight*, *The Glass Menagerie* (Tony Award), *Aladdin*, *Once* (Tony Award), *Motown*, *Hedda Gabler*, *Coast of Utopia: Salvage* (Tony Award), *A Chorus Line*, *Aida* (Tony Award), *Sweet Smell of Success*, *Twelfth Night*, and *Beauty and the Beast*. In London, she designed *Skylight* (Wyndham's Theatre), *Sister Act* (Palladium), *Buried Child* (National Theatre), and *Cyrano* (The Royal Opera). Ms. Katz has also designed extensively Off-Broadway and for American regional theatres. Her permanent installations include lighting for the audio-visual shows at Niketown London and New York City, *The Masquerade Village* at the Rio Casino, Las Vegas, and *Big Bang* at the Hayden Planetarium in New York City.



# CLAY REVISITED

TRADITIONS IN SHARDS



Betty Woodman (American, 1930–), *Pillow Pitcher*, 1980, Porcelain, 22 x 20 1/2 x 18 in.  
Gift of Joan E. Mannheimer, 1991.223. ©Betty Woodman

OCTOBER 8–DECEMBER 11, 2016  
Black Box Theater, Iowa Memorial Union

Funding for this exhibition was provided by  
the Gerald Eskin Ceramics Art Initiative



THE UNIVERSITY OF  
**IOWA**  
MUSEUM OF ART

# CONGRATULATIONS TO THE TEAM THAT BRINGS HANCHER AUDITORIUM-

THE ARCHITECTS,  
BUILDERS, ACOUSTICIANS,  
LIGHTING DESIGNERS, STAFF,  
AUDIENCES & PERFORMERS,  
WHO HAVE CREATED AND  
WILL CREATE ART IN THE  
MASTERPIECE THAT IS  
HANCHER. WE, TOO, BELIEVE  
IN TEAMWORK AND  
TOGETHER WORK CREATIVELY  
TO ENHANCE THE ART  
OF REAL ESTATE, BUILD  
RELATIONSHIPS, PRODUCE  
GREAT RESULTS. WE STRIVE  
FOR FAVORABLE REVIEWS  
BUT IT IS HANCHER THAT  
EXCITES THE WORLD.



The A-Team: Alan Swanson, Adam Pretorius, Tim Conroy  
Blank & McCune The Real Estate Company  
506 E. College St., Iowa City IA 52240 | 319-321-3129



## BASIL TWIST

### PUPPETRY

Originally from San Francisco, Basil Twist is a third-generation puppeteer and is the sole American to graduate from the École Supérieure Nationale des Arts de la Marionnette in Charleville-Mézières, France. Twist's work was first spotlighted in New York by the Henson International Festival of Puppet Theater with his award-winning *The Araneidae Show*. Coupled with the critically praised and award-winning *Symphonie Fantastique*, he was revealed as a singular artist of unlimited imagination. Highlights of his subsequent work include *Petrushka* (commissioned by Lincoln Center) and *Dogugaeshi* (The Japan Society), *Behind the Lid* (Silver Whale Gallery) with Lee Nagrin, and *Arias with a Twist*, co-created with nightlife icon Joey Arias. His productions have toured throughout the world. On Broadway, he created and staged the puppetry in *The Addams Family*, for which he won a Drama Desk Award, and staged the puppetry for *The Pee-Wee Herman Show*. In film, he collaborated most notably on *Harry Potter*.



Twist has received Obie, Drama Desk, New York Innovative Theatre, and Henry Hewes Design awards, as well as five UNIMA and two Bessie awards. He has also been awarded Guggenheim and USA Artists fellowships, and was awarded an inaugural Doris Duke Performing Artist Award. He was recently honored with a 2015 MacArthur Fellowship. He lives in NYC, where he guides The Dream Music Puppetry Program.

## BENJAMIN PEARCY

### PROJECTION DESIGNER

Benjamin Percy joined 59 Productions in 2011, with the Broadway production of *War Horse*. Also a lighting designer, Percy has lit and designed projections for theatre, opera, and architectural projects around the world, including *Big Fish* and *Whoopi!* on Broadway, Francesca Zambello's production of *Carmen* for the Beijing Opera, the U.S. national and international tours of *Riverdance*, national tours of *9 to 5*, *Beauty and the Beast*, and *My Fair Lady*, and many other productions of companies including the Alley Theatre, the Baltimore Opera, the Canadian Opera Company, the Houston Grand Opera, the Pittsburgh Opera, Opera Cleveland, Opera Omaha, and the Williamstown Theatre Festival. He has been a frequent collaborator with the renowned artist James Turrell, including designing the lighting for the James Turrell Museum in Colome, Argentina.



With 59, Percy's projects include *The Enchanted Island*, *Two Boys*, and *Satyagraha* for the Met Opera; The Opening Ceremony of the London 2012 Olympic Games; *Eugene Onegin* for the ROH; and *Dark Sisters* for the MTG/Opera Philadelphia. Future projects include *Pearl Fishers* for the ENO and *Wide Slumber* for Lepidopterists—a collaboration with composer Valgeir Sigurðsson.

Percy works from 59's U.S. headquarters in New York City.

**JACQUELIN BARRETT**  
CHOREOGRAPHER'S ASSISTANT

Jacquelin Barrett trained at The Royal Ballet School, joined London Festival Ballet (now English National Ballet), and, over a period of eight years, danced soloist and principal roles in the company's repertory. Ms. Barrett was the Ballet Mistress for Central School of Ballet, Northern Ballet Theatre, and English National Ballet. She is in demand as a guest teacher for many international professional companies and schools. From 1997 to 2008, Ms. Barrett taught at The Royal Ballet School, working mainly with the graduate female class. Since 2009, she has been assisting Christopher Wheeldon and staging his works around the world. She is the Associate Director on the musical *An American in Paris*.



**SUZANNE LOPEZ**  
CHILDREN'S BALLET MASTER

Suzanne Lopez was asked to join The Joffrey Ballet in 1991, after a year with the Joffrey II Dancers. She retired in 2010, after a long and outstanding career with the Company. She danced principal roles in ballets by such choreographers as Robert Joffrey, Gerald Arpino, George Balanchine, Jerome Robbins, Alonzo King, John Cranko, José Limón, Antony Tudor, Twyla Tharp, Lar Lubovitch, and Frederick Ashton. Some of her favorite roles to perform include the title roles in Cranko's *Romeo and Juliet* and Ashton's *Cinderella*, as well as the Sugarplum Fairy in Joffrey's *The Nutcracker*. She was also featured in world premieres by Edwaard Liang, Donald Byrd, Jessica Lang, and Margo Sappington, among others. Suzanne also had a featured role in the movie *The Company*, directed by Robert Altman.



Ms. Lopez has worked as a Ballet Master for the Joffrey, and has staged and rehearsed works for the Company. She has also been a guest teacher, stager, and coach at various schools and companies around the country. Currently, Ms. Lopez teaches at the Joffrey Academy of Dance, Chicago Ballet Arts, and the Chicago High School for the Arts.

# JOFFREY ★ BALLET

CHICAGO

## 2016-2017 ARTISTS OF THE COMPANY

TO LEARN MORE ABOUT THE DANCERS, VISIT:  
[JOFFREY.ORG/1617DANCERS](http://JOFFREY.ORG/1617DANCERS)



Matthew Adamczyk  
Ware, MA



Derrick Agnoletti  
San Jose, CA



Yoshihisa Arai  
Hiroshima, Japan



Amanda Assucena  
Rio de Janeiro, Brazil



Artur Babajanyan  
Yerevan, Armenia



Edson Barbosa  
Rio de Janeiro, Brazil



Miguel Angel Blanco  
Havana, Cuba



Anais Bueno  
Córdoba, Mexico



Fabrice Calmels  
Paris, France



Raúl Casasola  
Madrid, Spain



Valeriia Chaykina  
St. Petersburg, Russia



Nicole Ciapponi  
Vancouver, Canada



Lucia Connolly  
Los Angeles, CA



April Daly  
Rockford, IL



Fernando Duarte  
Rio de Janeiro, Brazil



Cara Marie Gary  
Belton, SC



Stefan Goncalves  
São Paulo, Brazil



Luis Eduardo Gonzalez  
Bogota, Colombia



Dylan Gutierrez  
Los Angeles, CA



Rory Hohenstein  
Washington, DC





Anastacia Holden  
Ann Arbor, MI



Dara Holmes  
Wilmington, NC



Riley Horton  
Kansas City, MO



Victoria Jaiani  
Tbilisi, Rep. of Georgia



Hansol Jeong  
Namyangju, South Korea



Gayeon Jung  
Seoul, Korea



Yumi Kanazawa  
Los Angeles, CA



Brooke Linford  
Alpine, UT



Graham Maverick  
San Francisco, CA



Jeraldine Mendoza  
San Francisco, CA



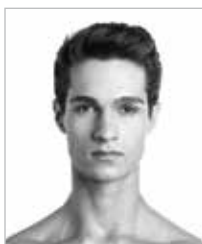
Jacqueline Moscicke  
Milwaukee, WI



Aaron Renteria  
Corona, CA



Christine Rocas  
Manila, Philippines



Paulo Rodrigues  
São Paulo, Brazil



Chloé Sherman  
New York, NY



Temur Suluashvili  
Tbilisi, Rep. of Georgia



Olivia Tang-Mifsud  
Los Angeles, CA



Alonso Tepetzi  
Orizaba, Mexico



Elivelton Tomazi  
Santa Catarina, Brazil



Alberto Velazquez  
Havana, Cuba



Mahallia Ward  
Austin, TX



Joanna Wozniak  
Rolling Meadows, IL



Joan Sebastián Zamora  
Cali, Colombia

THE NUTCRACKER PRODUCING SPONSORS

**MARGOT AND JOSEF LAKONISHOK**  
**THE SEARLE FUNDS AT THE CHICAGO**  
**COMMUNITY TRUST**

**HANCHER AUDITORIUM,**  
**THE UNIVERSITY OF IOWA**

THE NUTCRACKER CORPORATE SPONSORS



**BlueCross BlueShield**  
of Illinois

**GTL**

**GUARANTEE**  
**TRUST**  
LIFE



Arthur J. Gallagher & Co.



THE NUTCRACKER SPONSORS

**MARY JO AND DOUG BASLER**

**ROSEMARIE AND DEAN BUNTROCK**

**SANDY AND ROGER DEROMEDI**

**PAMELLA ROLAND DEVOS AND DANIEL DEVOS**

**SONIA FLORIAN**

**THE WALTER E. HELLER FOUNDATION**

**AUDITORIUM THEATRE**  
**OF ROOSEVELT UNIVERSITY**

**BRUCE SAGAN AND BETTE CERF HILL**

**BILL AND ORLI STALEY FOUNDATION**

**WOMEN'S BOARD OF THE JOFFREY BALLET**

THIS PROJECT IS PARTIALLY SUPPORTED BY

IncentOvate grant from the City of Chicago  
Department of Cultural Affairs and Special Events

ADDITIONAL SUPPORT PROVIDED BY

THE ANN BARZEL & PATRICK HENRY ARTS FUND

FRANCIS BEIDLER FOUNDATION

META S. AND RONALD BERGER FAMILY FOUNDATION  
WITH REBECCA AND JONATHAN BERGER

JOYCE AND BRUCE CHELBERG

TERRI AND ALFRED D'ANCONA

MR. AND MRS. ADAM DEWITT

DR. JILL S. DODDS AND DR. GURIQBAL NANDRA

PATTI S. EYLAR AND CHARLES R. GARDNER

ETHEL AND WILLIAM GOFEN

SUZANNE AND ALBERT M. FRIEDMAN

JILL GARLING AND THOMAS WILSON

SABRINA AND ANTONIO GRACIAS

HARRIS FAMILY FOUNDATION

SANDI AND BARRY HARTSTEIN

MR. AND MRS. DAVID H. HOFFMANN

MARY ITTELSON

NANCY AND SANFRED KOLTUN

MAKE IT BETTER MEDIA

COCO B. MEERS AND ETHAN MEERS

MARTHA AND RICH MELMAN

ANN AND TOM NASH

NATIONAL ENDOWMENT FOR THE ARTS

POLK BROS. FOUNDATION

PRINCE CHARITABLE TRUSTS

CHARLES AND JOANN RAYMOND

MS. COURTNEY C. SHEA

LESLIE AND ROBERT K. ZENTNER

\*as of November 11, 2016

# ORCHESTRA IOWA

Timothy Hankewich, *Music Director*

## VIOLIN

Dawn Gingrich  
*Concertmaster*

Anita Tucker  
*Associate Concertmaster*

Madeline Capistran  
*Assistant Concertmaster*

Lucy Duke  
Bryce Christensen  
Linda Judiesch

## VIOLIN II

Karla Galva  
*Principal*

Alla Cross  
*Associate Principal*

Michael Hall  
*Assistant Principal*

Jerry Henry

## VIOLA

Amanda Grimm  
*Principal*

Erin Rafferty  
*Associate Principal*

Jenwei Yu  
*Assistant Principal*

Matt Barwegen

## CELLO

James Ellis  
*Principal*

Amy Phelps  
*Associate Principal*

## BASS

Timothy Weddle  
*Principal*

Michael Van Ryn  
*Associate Principal*

## FLUTE

Jane Walker  
*Principal*

Hsing-I Ho

## OBOE

David Hempel  
*Principal*

Jillian Camwell

## CLARINET

Christine Bellomy  
*Principal*

Emily Beisel



# ORCHESTRA IOWA

*Continued from opposite page*

## BASSOON

Matt Ransom  
*Principal*

Greg Morton

## HORN

Andy Harris  
*Principal*

Peter Kortenkamp  
Dan Malloy

## TRUMPET

Andrew Classen  
*Principal*

Aren Van Houzen

## TROMBONE

Casey Maday  
*Principal*

Caleb Lambert

## BASS TROMBONE

G. Andrew Rozsa

## TUBA

Blaine Cunningham  
*Principal*

## KEYBOARD

Miko Kominami  
*Principal*

## HARP

Gretchen Brumwell  
*Principal*

## TIMPANI

Alan Lawrence  
*Principal*

## PERCUSSION

Thomas Mackey  
*Principal*

## STAFF

Jeffrey Collier  
CEO

Timothy Hankewich  
*Music Director*

Ed Karr  
COO

Logan Schultz  
*Operations Manager*

Blaine Cunningham  
*Librarian*

Jan Rosauer  
*Stage Manager*







# 10% OFF

bring in your ticket stub for a 10% off  
discount on your meal

210 S. Dubuque Street, Iowa City, Iowa 52240



Appreciate  
**every**  
performance.

Visit Concept by Iowa Hearing Aid Centers for your free hearing screening today, so you can hear each production more clearly tomorrow.

All Hancher attendees will receive three years of free batteries with any Concept hearing aid purchase. Call **[319] 250-0515** to receive this special.



Here today, hear tomorrow.



**Chris**  
EARL

**Nicole**  
AGEE

**Kaj**  
O'MARA

**Embracing the arts in Iowa's Creative Corridor.**



**Joe**  
WINTERS

**Bruce**  
AUNE

**Beth**  
MALICKI

**Scott**  
SAVILLE

**We are your 24 hour news source.**



# INTRODUCING

## THE YOUNG DANCERS OF *THE NUTCRACKER*



Grace Snider  
Children's Ballet Master  
and Director of Ballet  
at Nolte Academy



Adeline Bair  
2<sup>nd</sup> Grade  
North Liberty, IA



Maddie Brown  
8<sup>th</sup> Grade  
Iowa City, IA



MadeLynn Falco  
4<sup>th</sup> Grade  
West Branch, IA



Eleanor Fraga  
2<sup>nd</sup> Grade  
Iowa City, IA



Hailey Frank  
7<sup>th</sup> Grade  
Coralville, IA



Quinn Fridrich  
4<sup>th</sup> Grade  
North Liberty, IA



Aiden Gillespie  
5<sup>th</sup> Grade  
North Liberty, IA



Mia Gingerich  
4<sup>th</sup> Grade  
West Liberty, IA



Katie Granner  
8<sup>th</sup> Grade  
Coralville, IA



Magdalene Greer  
6<sup>th</sup> Grade  
Iowa City, IA



Gabriel Hahn  
2<sup>nd</sup> Grade  
Iowa City, IA



Logan Jaskolka  
6<sup>th</sup> Grade  
Iowa City, IA



Adelle Jenkins  
5<sup>th</sup> Grade  
Wellman, IA



Thomazin Jury  
8<sup>th</sup> Grade  
Iowa City, IA



Whit Jury  
6<sup>th</sup> Grade  
Iowa City, IA



Izabella Ketelsen  
2<sup>nd</sup> Grade  
Coralville, IA



Alyssa Lamb  
3<sup>rd</sup> Grade  
Iowa City, IA



Regan Lamb  
7<sup>th</sup> Grade  
Iowa City, IA



Claire Lanternier  
4<sup>th</sup> Grade  
Iowa City, IA



Shay LaVelle  
6<sup>th</sup> Grade  
Iowa City, IA





Jami Martin-Trainor  
8<sup>th</sup> Grade  
Cedar Rapids, IA



Sarah Martin-Trainor  
4<sup>th</sup> Grade  
Cedar Rapids, IA



Elizabeth Matthes  
3<sup>rd</sup> Grade  
Iowa City, IA



Brynn Miller  
7<sup>th</sup> Grade  
Iowa City, IA



Mairéad Moore  
11<sup>th</sup> Grade  
Iowa City, IA



Ella Morgan  
7<sup>th</sup> Grade  
Iowa City, IA



Leigha Pacha  
7<sup>th</sup> Grade  
Oxford, IA



Karis Patton  
7<sup>th</sup> Grade  
North Liberty, IA



Laura Pitkin  
6<sup>th</sup> Grade  
Coralville, IA



Gwendolyn Raab  
2<sup>nd</sup> Grade  
Iowa City, IA



Katie Ruppenkamp  
8<sup>th</sup> Grade  
Iowa City, IA



Abbey Schley  
7<sup>th</sup> Grade  
Iowa City, IA



Tatiana Schmidt  
6<sup>th</sup> Grade  
Iowa City, IA



Monique Schnoebelen  
6<sup>th</sup> Grade  
Iowa City, IA



Noelle Schnoebelen  
3<sup>rd</sup> Grade  
Iowa City, IA



Charley Snider  
1<sup>st</sup> Grade  
Solon, IA



Cora Sutton  
3<sup>rd</sup> Grade  
Solon, IA



Mia Thompson  
5<sup>th</sup> Grade  
Iowa City, IA



Ava Rose Turek  
5<sup>th</sup> Grade  
Iowa City, IA



Delaine Tyler  
5<sup>th</sup> Grade  
North Liberty, IA



Celeste Vargas  
4<sup>th</sup> Grade  
West Liberty, IA



Lilly Walker  
4<sup>th</sup> Grade  
Cedar Rapids, IA



Kathleen Washington  
8<sup>th</sup> Grade  
Iowa City, IA



Cordelia Zirnheld  
2<sup>nd</sup> Grade  
Iowa City, IA



Photos courtesy of Stephanie Henn



# BEYOND A DREAM COME TRUE

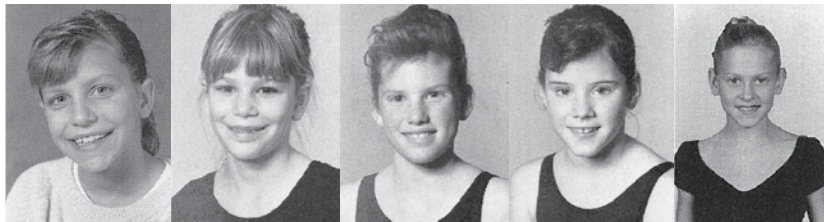
Looking back on dancing with The Joffrey Ballet in 1987's *Nutcracker* premiere

Dancing was my passion and love from the age of three. When The Joffrey Ballet announced they would be auditioning children in Iowa to perform in the world premiere of *The Nutcracker* in 1987, it was beyond a dream come true. If selected, not only would we be performing with a leading ballet company at Hancher Auditorium, but also at the Kennedy Center in Washington, DC!

A grueling audition and selection process was only the beginning of an amazing and positive adventure! The experience is something I will always hold dear to me. It gave me an elevated understanding and respect for the arts. It takes so much more than talent to be a professional dancer; it takes extreme dedication and heart.

Despite it being nearly 30 years later, I still have a poster from our performance framed in my home. I'm so grateful to The Joffrey Ballet and Hancher for giving the dancing community of Iowa that opportunity in 1987, and to so many other children in years to follow.

*Stephanie Henn*



## A GALA REUNION!

All those who danced as children in previous productions of the Joffrey's *Nutcracker* on the Hancher stage were invited to a special gala reception following the evening performance on December 3.

We are so grateful to the gala reception organizers:

BUFFIE TUCKER  
JUDY BOYD  
SUSANN HAMDORF  
ANNE HARGRAVE  
BRITTA LAZENG

We also thank the late Mary Gantz who worked on this project and was a passionate Hancher supporter and volunteer for many years. She is missed.

# NUTCRACKER KIDS

YOUNG DANCERS IN PREVIOUS PRODUCTIONS  
OF THE JOFFREY'S *NUTCRACKER* AT HANCHER

1987

Elisa Altorfer  
Vanessa Androus  
Megan Blair  
Elizabeth Brown  
Molly Chehak  
Rachel Conybeare  
Brooke Crowley  
Sara Curtin-Mosher  
Christene Davenport  
Chari Davis  
Kimberly Durham  
Lindsay Ellsworth  
Erin Engelbart  
Amy Estlund  
James Frankfurt  
Stephanie Henn  
Carrie Hughes  
Talaye Jaeger  
Kelli Jasiewicz  
Aimee Langlas  
Jessica Lee  
Amy Loffredo

Rachael Lu  
Lydia Lyman  
Sheilah Lynch  
John MacMillan  
Maggie Marlin  
Jenna Martin  
Kimberly Martins  
Jeffrey Maxted  
Ryan McBride  
Paul Mineck  
Shanna Morrissey  
Jamie O'Dell  
Sara Olson  
Chris Parizek  
Kristen Richardson  
Danielle Rieck  
Amanda Sales  
Katherine Sheehan  
Amanda Spillers  
Lisa Stackhouse  
Betha Woodsmall  
Gretchen Zimmerman



Photo: Herbert Migdoll

# NUTCRACKER KIDS

YOUNG DANCERS IN PREVIOUS PRODUCTIONS  
OF THE JOFFREY'S *NUTCRACKER* AT HANCHER

1989

Carrie Allbritten  
Amy Andersen  
Vanessa Androus  
Laura Bender  
Lindsay Blair  
Molly Boots  
Suzanne Brase  
Allison Brauhn  
Dena M. Brinson  
Corey Chown  
Sara Cilek  
Amie Crowley  
Katy Dane  
Keely Davenport  
Cara DeLeon  
Jennifer Dietz  
Jessica Elthon  
Amy Estlund  
Shawn Flanigan  
Natalie France  
Annie Gable  
Jennifer Gable  
Lori Anne Gaither  
Jessica Gantz  
Heather Goddard  
Jennifer Hamdorf  
Erin Kathleen Hargrave  
Sarah Holtkamp  
Mollie Huff  
Carrie Hughes  
Julia Jackson  
Shoni Jaeger  
Talaye Jaeger  
Kelli Jasiewicz  
Corrie Jaynes

Thaddaeus Jones  
Alicia Kirchhoff  
Natalie Lewis  
Lindsay Littler  
Jennie Loffredo  
Aline Loureiro  
Lydia Lyman  
Susan Madden  
Maggie Marlin  
Jennifer Maxted  
Ryan McBride  
Olivia Lauren Mills  
Amy Murray  
Karissa Nace  
Sara Olson  
Katherine Pantazis  
Katrina Reschly  
Danielle Rieck  
Leigh Riley  
Heidi Rogers  
Emily Rowat  
Amanda Sales  
Jessica Schmidt  
Jaclyn Searls  
Katherine Shea  
Kelsi Snakenberg  
Holly Stephens  
Joanne Sum-Ping  
Micah Swesey  
Nellie Viner  
Tricia Waterbeck  
Brooke Yates Patterson  
Fei Ye  
Cheryl Zimmerman

# NUTCRACKER KIDS

YOUNG DANCERS IN PREVIOUS PRODUCTIONS  
OF THE JOFFREY'S *NUTCRACKER* AT HANCHER

1990

Allison V. Alex  
Carrie Allbritten  
Jaime Allbritten  
Sarah Alward  
Dena M. Brinson  
Megan Elise Conlon  
Megan Cox  
Alyssa M. Craft  
Katy Dane  
Jennifer Dietz  
BrieAnna J. Dodd  
Ashley Jane Droll  
Erin Fett  
Jill Foss  
Stephanie Fotos  
Annie Gable  
Jennifer Gable  
Lori Anne Gaither  
Jessica Gantz  
Heather Goddard  
Joy Gruettner  
Barbara Hackbarth  
Erin Kathleen Hargrave  
Mollie Huff  
Carrie Hughes  
Julia Jackson  
Shoni Jaeger  
Talaye Jaeger  
Thaddaeus Jones  
Joanne Kane  
Molly Keating  
Alicia Kirchhoff  
Ashlynd Kohli  
Natalie Rae Kreger  
Kelly E. Loer

Staci Loer  
Aline Loureiro  
Caprice Lowry  
Lydia Lyman  
Kristin E. Marrs  
Jennifer Maxted  
Kate Miller  
Hillary Mills  
Olivia Lauren Mills  
Karissa Nace  
Grant Prestegard  
Laura Querrey  
Sarah Renk  
Danielle Rieck  
Leigh Riley  
Emily Rowat  
Amanda Sales  
Brianne Sales  
Jessica Schmidt  
Jaclyn Searls  
Kimberly Searls  
Katherine Shea  
Matthew Shea  
Joanne Sum-Ping  
Angela Marie Swenka  
Laurie Thomae  
LeAnn Thoms  
Erica Vogt  
Emma Warner  
Brianne Waychoff  
Larissa Weir  
Brooke Yates Patterson  
Sara Yost  
Heather Youngquist

# NUTCRACKER KIDS

YOUNG DANCERS IN PREVIOUS PRODUCTIONS  
OF THE JOFFREY'S *NUTCRACKER* AT HANCHER

1993

Allison V. Alex	Hillary Mills
Molly Amoroso	Angelina Mott
Jeanna Baker	Ashley Norden
Katherine Bayless	Erin Northway
Ellie Bentler	Jennifer Petersen
Natasha Bosma	Rachel Pitlik
Rebecca Busch	Erin Ponto
Hanni Chehak	Elayne Pregon
Alyssa Cohen	Laura Querrey
Alyssa M. Craft	Shelby Rieck
Lindsey L. Craft	Emily Rowat
Calli Cronbaugh	Shalae Schulte
Michelle Denny	Matthew Shea
Courtney Devor	Jenna Smith
Jennifer Dietz	Jessica Smith
Matthew Doran	Kristine Sorensen
Allison Durkee	Erica Spector
Sheila Franklin	Elizabeth Speidel
Emma Gelman	Laura Steinkraus
Jennifer Goedken	Jessica Steyers
Joy Gruettner	Amy Strawn
Tara Harms	Jennifer Strawn
Alejandra Hernandez	Anne Swanson
Mary Hicks	Barbara Thomas
Andrea Hileman	Ashley Tucker
Arin Hotz	Kate Van Dusseldorp
Lyndsay Jensen	Stephanie Watson
Tina Jorgensen	Kristen Webb
Jill Ann Kelley	Betsy White
Kathryn Kelly	Carmen Winkel
Stephanie Kontz	Dawin Wu
Andria Marlin	Elizabeth Wurster
Ashley Martin	Kristin Wurster
Cassandra Matthews	Brooke Yates Patterson
Elizabeth Matzen	Chelsie Zender
Molly Meng	Cheryl Zimmerman

# NUTCRACKER KIDS

YOUNG DANCERS IN PREVIOUS PRODUCTIONS  
OF THE JOFFREY'S *NUTCRACKER* AT HANCHER

1996

Maren Allen  
Clair Anciaux  
Christine Atty  
Gilbert Berquist  
Natasha Bosma  
Rachel Bowlsby  
Michelle Chase  
Colleen Cintron  
Alyssa Cohen  
Camron Devor  
Courtney Devor  
Sara Dietz  
Jill Dolter  
Melissa Francis  
Allison Gnade  
Whitney Green  
Emily Heath  
Megan Hennager  
Mary Hicks  
James Hofstetter  
Julie Hofstetter  
Whitney Hoogerwerf  
Patrick Houlahan  
Caitlin Howard  
Katherine Hubbard  
Cortney Jensen  
Melissa Jones  
Annie Kellerman  
Jennifer Kelzenberg  
Jaelynn Kluber  
Erica Kolsrud  
Sarah Konop  
Ashley Martin  
Janene McCune  
Lauren Miller  
Kaitlin Murray  
Emily Nelson  
Katie Noesen  
Ashley Norden

Taylor Norden  
Nicole Novak  
Christel Odgaard  
Erin Oldfield  
Amanda Oropeza  
Hadas Peleg  
Holly Petersen  
Jennifer Petersen  
Stephanie Petersen  
Elayne Pregon  
Lacey Lou Ritscher  
Lauren Scott Talman  
Nicole Sedlacek  
Abby Elissa Sheffield  
Courtney Skay  
Jennifer Slaymaker  
Jenna Smith  
Jessica Smith  
Paulina Sonkova  
Laurie Swanson  
Eleanore Taft  
Holly Thalken  
Stephanie Torpey  
Laura Traynelis  
Mary Nelle Trefz  
Lucas Van Tol  
Elizabeth Vanderah  
Natalie Vernon  
Bethany Vittetoe  
Allison Vogt  
Keeley Walsh  
Stephanie Watson  
Stacy Weeter  
Katie Wendler  
Lindsey Windauer  
Dawin Wu  
Kristin Wurster  
Chelsie Zender



# NUTCRACKER KIDS

YOUNG DANCERS IN PREVIOUS PRODUCTIONS  
OF THE JOFFREY'S *NUTCRACKER* AT HANCHER

2004

Megan Anderson	Elisabeth Hottel
Amanda Bartels	Paola Jaramillo-Guayara
Emily Belding	Colleen Johnston
Kelsey Blocklinger	Katherine Kohnen
Courtney Bode	Elizabeth Laikhter
Rachel Brandt	Chessa Loushin
Cara Braverman	Emily Medd
Alison Brinkman	Anna Mondanaro
Shena Bryan	Lauren Mondanaro
Summer Burch	Gina Montagna
Maddie Bushnell	Jessica Morosky
Ada Cassell	Rachael Mysnyk
Hannah Catron	Baylie Ostler
Cassandra Ceurvorst	Haley Overton
Ainsley Cooper	Mary Paluska
Francesca Crutchfield-Stoker	Kaela Paris
Caitlin Danielson	Claire Perlman
Kellee Darnier	Xena Plaut Fitzgerald
Jenna DeBoer	Autumn Reeder
Miranda Decker	Kiley Ritchie
Clare Dehn	Catherine Rudolph
Rachel Deutsch	Zoey Salisbury
Maleaha Earnest	Allie Setter
Taylor Fehlberg	JoJo Silverman
Ella Feldman	Jennifer Sluka
Breanna Flater	Samantha Smith
Mackenzie Freeman	Emily Sohl
Kelsi Fryauf	Rachel Stewart
Ashley Fuller	Catherine Suchanek
Madison Fung	Katelyn Swearingen
Amanda Gerard	Paige Tomson
Clancy Haase	Caitlin Ward
Christina Hamilton	Hannah Weeks
Ariel Hayes	Lindsey Woodiwiss
Erin Renée Helm	Victoria Zhu
Emma Hermiston	

“SPARKLING, FRESH AND LIVELY.”

- *Los Angeles Times*

RODGERS & HAMMERSTEIN'S  
The  
Sound of  
Music  
Book By  
Lindsay  
& Crouse  
Directed by Jack O'Brien



TUESDAY–FRIDAY, JANUARY 31–FEBRUARY 3, 7:30 PM  
SATURDAY, FEBRUARY 4, 2 PM & 7:30 PM  
SUNDAY, FEBRUARY 5, 1 PM

The hills are alive! A brand new production of THE SOUND OF MUSIC, directed by three-time Tony Award® winner Jack O’Brien, is now on tour across North America. The beloved musical story of Maria and the von Trapp Family will once again thrill audiences with its Tony®, Grammy®, and Academy Award® winning Best Score, including “My Favorite Things,” “Edelweiss,” and the title song.

TICKETS:	TU / W / TH		F / SA (EVE)		SA (MAT) / SU (MAT)	
	ZONE I	ZONE II	ZONE I	ZONE II	ZONE I	ZONE II
ADULT	\$85	\$60	\$100	\$75	\$100	\$75
COLLEGE STUDENT	\$51	\$36	\$60	\$45	\$100	\$75
YOUTH	\$51	\$36	\$60	\$45	\$100	\$75

EVENT SPONSORS:

WAYNE AND NORA LEE BALMER  
CORALVILLE MARRIOTT HOTEL & CONFERENCE CENTER  
IOWA CITY PRESS-CITIZEN  
TOYOTA/SCION OF IOWA CITY AND ABRA AUTO AND BODY GLASS  
HERBERT A. AND JANICE A. WILSON





**Call me today for your  
personal tour**

Steve Roe  
Executive Director  
MBA  
Licensed Nursing Home  
Administrator

Experience the same comforts  
as you do in your own home...  
and then some...

*We have some lovely  
apartments available*

**Oaknoll**

*An active LifeCare community since 1966*

1 Oaknoll Court • Iowa City, IA 52246 • [www.oaknoll.com](http://www.oaknoll.com) • [oaknoll@oaknoll.com](mailto:oaknoll@oaknoll.com)



*Delivering Excellence from the Ground Up*

*Our name reflects our mission to provide a  
personalized and professional real estate experience  
whether your interests are downtown, on an acreage,  
near the water, or any point in between!*

**urbanacres.com**

# THE MANSION

FINE FURNISHINGS • INTERIOR DESIGN



*Rediscover* **THE MANSION'S** *versatile sense of style!*

Endless furniture, lighting, art, mirrors, area rugs and window treatment options, all hand-picked to meet your needs by our talented interior design staff.

Come in to see the latest items available off the floor or to explore the many options available via special order.



538 S GILBERT STREET, IOWA CITY  
PH 319.338.2830 | M-F 9-5, SAT 10-2  
**WWW.THEMANSION.DESIGN**



# HANCHER BUILDING DONOR HONOR ROLL

**JOHN AND DYAN SMITH**

**RICHARD H. AND MARY JO STANLEY**

**LEONARD A. AND MARLENE S. HADLEY**

**SUSAN T. AND JOHN S. STRAUSS**

**FRANK R. BROWNELL III**

**HOLTHUES TRUST**

**CHRIS AND SUZY DEWOLF FAMILY**

**BRIAN F. AND YVONNE L. MCCABE**

**HERBERT A. AND JANICE A. WILSON**

**MARY KRISTINE BECKWITH  
AND DAVID HARRY MOORE**

**DONALD W. HEINEKING**

**RALPH H. AND MARCIA A. CONGDON**

**TRANSAMERICA**

**JOHN S. AND PATRICIA C. KOZA**

**KENT AND LORETTA A. ANGERER**

**BETTY S. WINOKUR**

**DARYL K. AND NANCY J. GRANNER**

**DANIEL J. & ANN L. KRUMM CHARITABLE TRUST**

**THOMAS M. AND KATHRYN P. NEREIM**

**ARTHUR AND GINGER NOWAK**

**LLOYD J. AND THELMA W. PALMER**

**DOUGLAS J. AND LINDA E. PAUL**

**DAVID AND NOREEN REVIER**

**EDWIN M. AND MARY S. STONE**

**ROBERT N. AND JANE A. DOWNER**

**JACKSON H. AND NONA SEBERG ROE**

**HNI CORPORATION**

**JULIE K. SCOTT AND JAMES F. FLUCK**

**DAVID H. AND RHODA L. VERNON**

**WAYNE L. AND NORA LEE BALMER**

**ROBERT F. AND JUDITH C. BOYD**

**CHARLES R. AND BARBARA S. CLARK**

**ELLIE AND PETER DENSEN**

**SHERWOOD H. AND SARA C. WOLFSON**

**DR. WILLIAM AND MARLENE W. STANFORD**

**WILLIAM M. AND JENNIFER SNYDER LYNCH**



JEFFREY VINCENT AND KRISTINE K. NIELSEN  
CHARLES M. AND MARY ANN PETERS  
STEVEN F. AND JANIE R. SCHOMBERG  
J. RICHARD AND BETTY PEARL SIMON  
CHARLES AND KIMBERLY SWANSON  
ALAN L. AND ELIZABETH A. SWANSON  
JEFFREY R. AND TAMMY S. TRONVOLD  
STUART L. AND LYNN WEINSTEIN  
UNIVERSITY OF IOWA COMMUNITY CREDIT UNION  
WILLIAM D. AND LESLIE M. BENNISON  
PHILLIP E. AND JO LAVERA JONES  
GEORGE A. AND BARBARA J. GRILLEY  
THE GAZETTE FOUNDATION  
ELLEN M. WIDISS  
GARY AND LADONNA WICKLUND  
JAMES W. CARNEY  
W. RICHARD AND JOYCE P. SUMMERWILL  
ALBERT B. AND JEAN M. HOOD  
IAN E. AND DEBORAH K. BULLION  
THOMAS L. CARDELLA  
CEDAR RAPIDS BANK AND TRUST COMPANY  
BRADLEY I. AND MARGARET A. DAVIS  
BRUCE J. AND MARY DEJONG GANTZ  
MARK C. AND VICKIE P. GINSBERG  
GARRY R. AND SUSANN K. HAMDORF  
HILLS BANK AND TRUST COMPANY  
KENNETH K. AND JEANETTE LAUGHLIN KINSEY  
WILLIAM H. OLIN, SR., AND BERTHA S. OLIN  
JEAN E. AND RENÉE ROBILLARD  
JEFFREY L. AND SUSAN J. SAILORS  
JOHN L. AND CATHERINE M. SOLOW  
LYSE S. STRNAD, THOMAS, AUBREY, AND BEAU LEAVENWORTH  
JOYLEEN E. AND DENNIS A. SWANSON  
DOUGLAS AND VANCE VAN DAELE  
DEREK H. AND PAMELA H. WILLARD  
CATHERINE ZAHARIS AND ROBERT S. MICHAEL  
SHERYL AND CHARLES SKAUGSTAD JR.  
JULIET Y. MATTILA AND ROBIN MAGOWAN  
RICHARD M. AND BUFFIE P. TUCKER  
MICHAEL J. LENSING  
VICKI LENSING AND RICHARD F. TEMPLETON  
MIDWESTONE BANK  
MARK A. AND LESLIE M. NOLTE  
JOHN R. MENNINGER  
WEST MUSIC  
ROBERT E. AND KARLEN M. FELLOWS  
YVONNE OLIVER AND THOMAS H. SUMMY  
PHILLIP A. AND MARY MARGARET LAINSON  
RICHARD GLOSS AND HAL IDE

Studio | 1BR | 2BR | Respite

*Brown  
Deer Place*  
RETIREMENT LIVING & MEMORY CARE

1500 First Avenue North  
Coralville, Iowa 52241  
(319) 337-6320  
[www.BrownDeerPlace.com](http://www.BrownDeerPlace.com)

# Embrace Every Moment

At Brown Deer Place we are devoted to helping you and your loved one embrace every moment. We are staffed by professionals who honor residents' individual needs and preferences. Our community has just undergone an extensive remodeling project, so make plans to tour soon. Call 319-337-6320 to schedule your visit!



Whether the first act or the curtain call, dine or stay in style at the Coralville Marriott® Hotel & Conference Center. With close proximity just minutes to Hancher Auditorium, you can easily turn your evening outing into an unforgettable event.

**SHOW YOUR HANCHER  
TICKET STUB AND  
RECEIVE 15% OFF  
YOUR FOOD ORDER  
AT EDGEWATER GRILL.**

Valid September 1st – July 31st, 2017.

**JOIN US FOR A  
MOUTHWATERING  
PERFORMANCE.**

**CORALVILLE MARRIOTT HOTEL & CONFERENCE CENTER**

300 EAST 9TH STREET | CORALVILLE, IOWA 52241  
319-688-4000 | [CORALVILLEMARRIOTT.COM](http://CORALVILLEMARRIOTT.COM)



**MARRIOTT  
CORALVILLE**

# THANK YOU

Hancher thanks our Partners for their unwavering loyalty and crucial support. Their generosity enables us to bring the world's finest performing artists to our region.

FRANÇOIS M. AND DORIS E. ABBOUD

TERRY AND JOHANNA ABERNATHY

LEE AND KAZI ALWARD

LORETTA ANGERER

ANONYMOUS DONORS

ANONYMOUS FAMILY FOUNDATION

DALE AND LINDA BAKER

WAYNE AND NORA LEE BALMER

LOANNA (deceased) AND ORVILLE BLOETHE/  
HLV COMMUNITY SCHOOL FUND

ROBERT F. AND JUDITH C. BOYD

DEB AND BILL BRANDT/BRANDT HEATING & AIR CONDITIONING

CAROLYN BROWN AND JERRY ZIMMERMANN

JOHN AND ELLEN BUCHANAN

DEBORAH K. AND IAN E. BULLION

WILLIS M. AND LINDA BROWN BYWATER

MARY K. CALKIN

JOHN AND KIM CALLAGHAN

JO CATALANO

CBI BANK AND TRUST

CHARLES RICHARD AND BARBARA S. CLARK

JAMES AND LORETTA CLARK

KATHERINE RATHE CLIFTON

JORDAN L. AND JANA E. COHEN

GARY AND CATHY COHN

RALPH H. AND MARCIA A. CONGDON

ANDY AND KARRIE CRAIG

JON AND JUDY CRYER

LINDA AND JOHN DASHER

BRAD AND PEGGY DAVIS

ELLIE AND PETER DENSEN

GEORGE AND LOIS EICHACKER

EVERYBODY'S WHOLE FOODS

DAN FELDT IN MEMORY OF NATALIE FELDT

ROBERT AND KARLEN FELLOWS

ED AND PATRICIA FOLSOM

BRUCE GANTZ AND MARY DEJONG GANTZ (deceased)

PAT GAURON

THE GAZETTE

M.C. GINSBERG "OBJECTS OF ART"/MARK AND VICKIE GINSBERG

SHAUN GLICK AND JESSICA TUCKER GLICK

RICHARD GLOSS AND HAL IDE

DARYL K. AND NANCY J. GRANNER

GEORGE A. AND BARBARA J. GRILLEY

BRENT HADDER

LEONARD AND MARLENE HADLEY



GARRY R. AND SUSANN K. HAMDORF  
 HANCHER SHOWCASE/HANCHER GUILD  
 HANCHER STUDENT ALUMNI  
 ANNE HARGRAVE  
 DONALD W. HEINEKING  
 HILLS BANK AND TRUST COMPANY  
 RAPHAEL AND JODI K. HIRSCH  
 ARNOLD AND DARCY HONICK  
 ALBERT B. AND JEAN M. HOOD  
 H. DEE AND MYRENE HOOVER  
 HOTELVETRO  
 KENN AND JANIS HUBEL  
 RICHARD AND JUDITH HURTIG  
 IOWA CITY PRESS-CITIZEN  
 IOWA HOUSE HOTEL  
 PHILLIP E. AND JO LAVERA JONES  
 WILLIAM AND SUSAN JONES  
 KDAT  
 ROGER AND GAYLE KLOUDA  
 JOHN AND PATRICIA KOZA  
 DR. KARL AND GAY KREDER  
 TIM AND SARAH KRUMM  
 PHILLIP AND MARY MARGARET LAINSON  
 ROGER AND SARAH LANDE  
 LENSING FUNERAL & CREMATION SERVICE  
 DONALD AND RACHEL LEVY  
 LITTLE VILLAGE  
 ED AND ANN LORSON  
 CASEY MAHON  
 CORALVILLE MARRIOTT HOTEL & CONFERENCE CENTER  
 PETER AND ANNE MATTHES  
 WILLIAM MATTHES AND ALICIA BROWN-MATTHES  
 MEARDON, SUEPPEL & DOWNER P.L.C.  
 JOHN R. MENNINGER  
 MIDWESTONE BANK  
 SANDRA AND THOMAS MINTNER/NTI AMERICAS INC.  
 REX MONTGOMERY (deceased)  
 FRANK AND JILL MORRISS  
 MORTENSON CONSTRUCTION  
 THE NEUMANN FAMILY IN MEMORY OF DR. GEORGE R. NEUMANN  
 NEUMANN MONSON ARCHITECTS, P.C.  
 JEFFREY AND KRISTINE NIELSEN  
 MARK AND LESLIE NOLTE  
 ARTHUR AND GINGER NOWAK  
 OAKNOLL RETIREMENT RESIDENCE  
 KEVIN W. O'BRIEN/ MCDONALD'S RESTAURANTS  
 MICHAEL W. O'HARA AND JANE ENGELDINGER  
 WILLIAM H. AND BERTHA S. OLIN  
 LAMONT D. AND VICKI J. OLSON  
 OPN ARCHITECTS, INC.  
 ROBERT A. OPPLIGER  
 ORCHARD GREEN RESTAURANT & LOUNGE  
 /BRYAN HERZIC AND SHELLY KOLAR HERZIC  
 LLOYD (deceased) AND THELMA PALMER

**Hills Bank**  
 and Trust Company  
Member FDIC

**PCmedia**  
 PRESS-CITIZEN MEDIA  
PART OF THE USA TODAY NETWORK

**hotelVetro**  
 THE UNIVERSITY OF IOWA  
**IOWA HOUSE HOTEL**  
 Iowa Memorial Union

**104.5 KDAT**  
TODAY'S BEST MP3

**LENSING**  
 Funeral & Cremation Service

**lv.**  
**LITTLE VILLAGE**  
CREMATION • FUNERAL • HOME VISIT AND

**M**  
**MARRIOTT**  
 CORALVILLE

**MEARDON, SUEPPEL & DOWNER P.L.C.**  
COMPREHENSIVE LEGAL SOLUTIONS  
 MEARDONLAW.COM

**MidWestOne**  
 Bank

**Mortenson**  
 construction

**NTI**  
 AUDIO

**NEUMANN MONSON ARCHITECTS**

**Oaknoll**

**OPN**  
 ARCHITECTS

**Orchard Green**  
 restaurant lounge



DOUGLAS AND LINDA PAUL  
PELLI CLARKE PELLI ARCHITECTS  
CHUCK AND MARY ANN PETERS  
PHELAN, TUCKER, MULLEN, WALKER, TUCKER & GELMAN, L.L.P.

**Pelli Clarke Pelli Architects**

MARGARET R. POLSON  
ALAN AND AMY REED  
CHAD AND ERICA REIMERS  
DAVID AND NOREEN REVIER  
RIVERSIDE CASINO & GOLF RESORT  
JEAN E. AND RENÉE ROBILLARD  
TOM ROCKLIN



JACK AND NONA ROE

JO ELLEN ROSS

JEFF AND SUSAN SAILORS

SCHEELS

**SCHEELS**

PEGGY SCHOLZ

STEVE AND JANIE SCHOMBERG

RALPH SCHULTZ FAMILY FOUNDATION

CARL AND JULIE SCHWESER

THOMAS R. SCOTT

SHERATON IOWA CITY HOTEL



**Sheraton**  
IOWA CITY HOTEL

LOUIS P. AND PATRICIA A. SHIELDS

SHIVE-HATTERY ARCHITECTURE + ENGINEERING

WILLIAM AND MARLENE W. STANFORD

RICHARD AND MARY JO STANLEY

EDWIN AND MARY STONE

SUE STRAUSS

**SHIVEHATTERY**  
ARCHITECTURE + ENGINEERING

LYSE STRNAD AND TOM LEAVENWORTH

W. RICHARD AND JOYCE SUMMERWILL

ALAN AND LIZ SWANSON

CHUCK AND KIM SWANSON

TALLGRASS BUSINESS RESOURCES



TIM TERRY AND GRETCHEN RICE

KEITH AND NANCY THAYER

JAMES AND ROBIN TORNER

TOYOTA/SCION OF IOWA CITY AND ABRA AUTO AND BODY GLASS



JEFFREY R. AND TAMMY S. TRONVOLD

UNIVERSITY OF IOWA COMMUNITY CREDIT UNION

UNIVERSITY HOUSING & DINING

DOUGLAS AND VANCE VAN DAELE

RHODA VERNON

STEPHEN AND VICTORIA WEST

WEST MUSIC COMPANY

GARY A. AND LADONNA K. WICKLUND

ELLEN M. WIDISS

DEREK AND PAMELA WILLARD

DOROTHY M. WILLIE

HERBERT A. AND JANICE A. WILSON

WILSON FAMILY FOUNDATION

BETTY WINOKUR

SHERWOOD (deceased) AND SARA WOLFSON

DEBORAH AND RODNEY ZEITLER





The Hancher Showcase – staffed and managed entirely by volunteers in the Hancher Guild—is filled with unique, high-quality items that you’ll want for yourself or when you need a special gift.

Proceeds of all Showcase sales are used to support Hancher’s educational programs.

The Showcase opens one hour prior to a performance’s starting time and remains open through and after the performance.

The Showcase is also open on Wednesdays, from 10 am to 1 pm, and on Thursdays, from 4:30 to 7:30 pm, while the Stanley Café is open to the public for Thursday Nights at Hancher.

## HOLIDAY HOURS:

(November 1-17, November 29-December 22)

- One hour before performances, at intermission, and after performances
- Tuesdays 10 am-1 pm
- Wednesdays 10 am-1 pm
- Thursdays 10 am-1 pm, 4:30-7:30 pm

 HANCHER SHOWCASE





\*\*\*\*\*  
A TRIP FOR  
MUSIC LOVERS  
\*\*\*\*\*

# SPRING BREAK — on the — French Riviera

MONTE CARLO | CANNES | ST. TROPEZ

9  
days

March 21-29, 2017

Experience the food, art, and music that have made the  
Riviera the playground for the rich and famous!

Details at [www.kcck.org/travel](http://www.kcck.org/travel)  
Please contact Lisa Baum at:  
319.398.5421 or [lisa@kcck.org](mailto:lisa@kcck.org)

kcck  
jazz 88.3

## IOWA CITY'S BEST MOVIE THEATER YOUR HOME FOR INDIE CINEMA

\*VOTED "BEST OF THE AREA" BY PRESS-CITIZEN READERS IN 2015 AND 2014

FINE  
WINE



CRAFT  
BEER



# FILM SCENE



TASTY IOWA  
POPCORN!

IOWA CITY'S NONPROFIT CINEMA  
ON THE PED MALL • [WWW.ICFILMSCENE.ORG](http://WWW.ICFILMSCENE.ORG)

# AN ONGOING PARTNERSHIP

## Hancher and The Joffrey Ballet

Hancher and The Joffrey Ballet have been artistic collaborators since the company first performed on the original Hancher Auditorium stage in 1974.



*Trinity*, choreographed by Gerald Arpino, 1974



Joffrey II in residency at a junior ballet camp at The University of Iowa, 1982

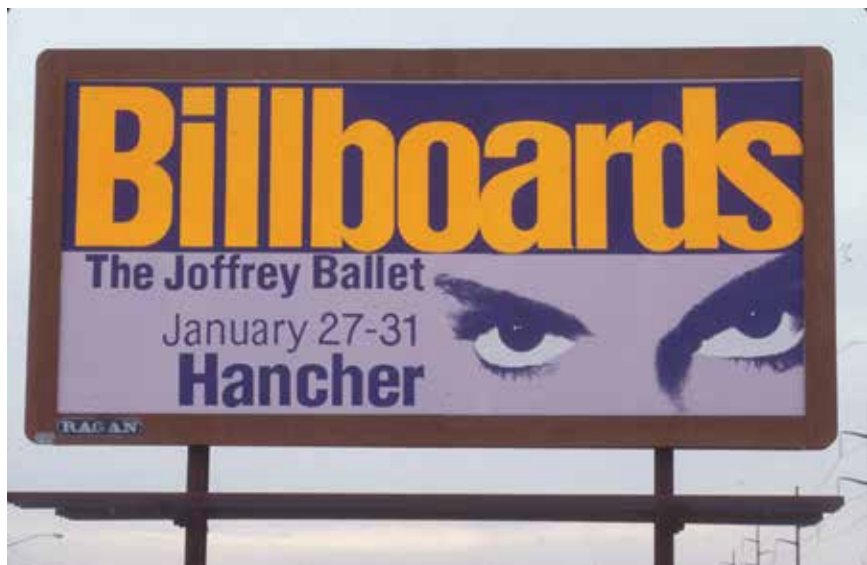
In 1978, the people of Iowa City and the surrounding area came together to replace the Joffrey's costumes—delayed in five trucks stuck in a snowstorm—for a performance of *Rodeo*. In 1982, 1983, and 1985, the Joffrey II Dancers participated in extended residencies, visiting communities large and small. In 1986, the Joffrey danced the premiere of James Kudelka's *The Heart of the Matter* at Hancher Auditorium; it was the first work Hancher had ever commissioned.

1987 saw the world premiere of another commission and Robert Joffrey's final work—his distinctly American version of *The Nutcracker*—on the Hancher stage.



*The Nutcracker*, choreographed by Robert Joffrey, 1987. Photos by Herbert Migdol.

*Billboards*, commissioned by Hancher and featuring music by Prince, premiered at Hancher Auditorium in 1993.



*Billboards*, choreographed by Laura Dean, Charles Moulton, Margo Sappington, and Peter Pucci, 1993. Photos by Herbert Migdol.



In 2007, Hancher took The Joffrey Ballet on a nine-day, five-performance tour of Iowa for outdoor performances that were enjoyed by more than 35,000 people.



The Joffrey Ballet, *Sometimes it Snows in April*



The Joffrey Ballet, *Untitled*. Dancers: Maia Wilkins, Michael Levine, Michael Smith, and Jennifer Goodman.





The Joffrey Ballet performing at Space Place as part of Hancher's 2014-2015 season. Above: *Son of Chamber Symphony*, choreography by Stanton Welch. Dancers: Yoshihisa Arai, Derrick Agnoletti, Anastacia Holden, John Mark Giragosian, Ogulcan Borova. Below: *The Man in Black*, choreography by James Kudelka. Dancers: Amber Neumann, Ogulcan Borova, John Mark Giragosian, Rory Hohenstein. Photos: Miriam Alarcón Avila



The deep connection between Hancher Auditorium and The Joffrey Ballet continues with the commissioning and presentation of Christopher Wheeldon's new vision of *The Nutcracker*.







# HANCHER AUDITORIUM UPCOMING EVENTS



12/6 Emanuel Ax

12/9 Asleep at the Wheel  
*Merry Texas Christmas Y'all!*

1/20 The Cleveland Orchestra

1/27 Kyle Abraham/Abraham.In.Motion

1/31-2/5 *The Sound of Music*

2/8-9 *Soil*, conceived by Michael Sakamoto

2/11 The Ying Quartet with Billy Childs

2/16 Tanya Tagaq in concert with *Nanook of the North*



## TICKETS

Order online [hancher.uiowa.edu](http://hancher.uiowa.edu)

Call (319) 335-1160 or 800-HANCHER

Accessibility Services (319) 335-1158

**\$10**  
**FOR MOST**  
**STUDENT**  
**TICKETS**

Individuals with disabilities are encouraged to attend all University of Iowa sponsored events. If you are a person with a disability who requires a reasonable accommodation in order to participate in this program, please contact Hancher in advance at (319) 335-1158.

## STANLEY CAFÉ

- Full cafe and bar open two hours prior to showtime
- Second floor bar open one hour following the performance



UNIVERSITY  
**CATERING**  
SERVING OUR  
CAMPUS & COMMUNITY

**HANCHER**



# Sometimes when you're sick, the show must go on.

Get care from the convenience of where you are – and don't miss a step. Visit with a University of Iowa Health Care provider via video chat. Anywhere in Iowa, anytime of day.

## UIeCare®

Trusted Providers | 24/7 Convenience



**Receive care when you need it.**

**Download the UIeCare app today.**

---

UIeCare.com | Para Español, visite UIeSalud.com.



# PATEK PHILIPPE

## GENEVE

Begin your own tradition.

You never actually own a Patek Philippe.  
You merely take care of it for the next generation.



Annual Calendar Ref. 5205G

m.c. ginsberg

JEWELRY AND OBJECTS OF ART

110 East Washington Street · Iowa City  
319-351-1700

IN THE HEART OF THE OLD CAPITOL CULTURAL DISTRICT