



HANCHER AUDITORIUM



MARTHA
GRAHAM
DANCE
COMPANY
GRAHAM100

Friday, March 29, 2024
7:30 p.m.

*Presented in collaboration with
the Department of Dance and
University of Iowa Dance Company*

Photo: Dragan Perkovski

IOWA

UNITED BY PURPOSE

to
Make a Difference!



For our family, selling cars is just part of the story. Driven by a mission to positively impact the lives of our guests, and make a difference in our community, **McGrath** has served Eastern Iowa for four generations.

Evolving since 1952.

MARTHA GRAHAM
DANCE COMPANY

GRAHAM100

THE 100TH ANNIVERSARY OF THE MARTHA GRAHAM DANCE COMPANY

Friday, March 29, 2024, at 7:30 p.m.
Hancher Auditorium, the University of Iowa

Artistic Director
JANET EILBER

Executive Director
LARUE ALLEN

The Company

LLOYD KNIGHT XIN YING LORENZO PAGANO
LESLIE ANDREA WILLIAMS ANNE SOUDER LAUREL DALLEY SMITH
SO YOUNG AN MARZIA MEMOLI JACOB LARSEN
ALESSIO CROGNALE-ROBERTS RICHARD VILLAVERDE DEVIN LOH
ANTONIO LEONE MEAGAN KING ANE ARRIETA
ZACHARY JEPSEN MATTHEW SPANGLER AMANDA MOREIRA JUSTIN VALENTINE

Rehearsal Director
LORENZO PAGANO

with **UNIVERSITY OF IOWA DANCE STUDENTS**
For Panorama

Major support for the Martha Graham Dance Company is provided by:
Howard Gilman Foundation
National Endowment for the Arts
New York City Department of Cultural Affairs in partnership with the New York City Council
New York State Council on the Arts with the support of the New York State Legislature

The Artists employed in this production are members
of the American Guild of Musical Artists AFL-CIO.

In the tradition of its founder, the Martha Graham Center of Contemporary Dance remains committed to being a diverse, equitable, inclusive, and anti-racist organization, and will honor this pledge through its ongoing practices, policies, and behaviors.

Copyright to all Martha Graham dances presented held by the
Martha Graham Center of Contemporary Dance, Inc.
All rights reserved.

There will be one 15-minute intermission.

There will be a post-show reception in the Stanley Café following the performance.

HANCHER EVENT PARTNERS

George A. & Barbara J. Grilley

Bruce & Melanie Hauptert

Ed & Ann Lorson

Leslie & Mark Nolte / Nolte Academy

François M. & Doris E. Abboud

Bill Rubright in loving memory of
Karen G. Rubright & Emilie J. Rubright

PROGRAM

Errand into the Maze

Choreography by MARTHA GRAHAM

Music by GIAN CARLO MENOTTI*

Lighting by LAUREN LIBRETTI

Costumes by MARIA GARCIA

Premiere: February 28, 1947, Ziegfeld Theatre, New York City

There is an errand into the maze of the heart's darkness in order to face and do battle with the Creature of Fear. There is the accomplishment of the errand, the instant of triumph, and the emergence from the dark.

SO YOUNG AN ALESSIO CROGNALE-ROBERTS

*Used by arrangement with G. Schirmer, Inc., publisher and copyright owner



KCRG WELCOMES YOU BACK TO

Hancher



kcrg.com

**YOUR TRUSTED
LOCAL NEWS SOURCE**

PROGRAM

Panorama

Theme of Dedication – Imperial Theme – Popular Theme

Choreography and Costumes by MARTHA GRAHAM
Music by NORMAN LLOYD[†]
Lighting by DAVID FINLEY
Regisseur, VIRGINIE MÉCÈNE

Premiere: August 14, 1935, Vermont State Armory, Bennington, VT

Featuring University of Iowa Dance Students

CASSIDY BANWART MADDIE BULMAN MADISON BURKHART
SORAYA COHEN CEARRA CROSSER ELLIE DALEY JAIDYN DAVIS
JACK DELANEY AMELIA FISHER NOAH FOX RUBY GENTZLER
ENZA HANDZEL JEMMA HOFFMAN ETHAN HOOTEN CLAUDIA JACOBSON
HAYDEN JENSEN ELLEN LEE TORI LEFLER AMYA LOPEZ
KENDRA McDANIEL ASHLEY McKIM SOPHIA McLAUGHLIN
ALLYSON MEINDERS MAGGIE NOLAN MORGAN POWERS EMMA PROCH
ALLYSON RADKE CAMERON REZABEK GRACIE SCHULTZ
LINDSEY URBANSKI MAYA VILLANUEVA PAIGE WALLER
LINDSEY WILDMAN TRINITY WOODY

Understudies

JAKI BASS EMILY PYBURN

Rehearsal Director

KATELYN PEREZ

Faculty Advisors

ELOY BARRAGÁN STEPHANIE MIRACLE

Costume Coordinators

CINDY KUBU

PERFORMING ARTS PRODUCTION UNIT

Original reconstruction in 1992 by Yuriko, from the Julien Bryan film

[†]Arranged and orchestrated by Stanley Sussman

PROGRAM

Rodeo

or **The Courting at Burnt Ranch**

Choreography by AGNES DE MILLE

Music by AARON COPLAND*

Bluegrass Arrangement by GABRIEL WITCHER

Scenery by BEOWULF BORITT

Costume Design by OANA BOTEZ

Lighting Design by YI-CHUNG CHEN

Staged by DIANA GONZALEZ

Tap Solo Choreography by DIRK LUMBARD

*Rodeo was first performed by the Ballet Russe de Monte Carlo on October 16, 1942,
at the old Metropolitan Opera House in New York City*

This is not an epic, nor the story of pioneer conquest. It builds no empires. It is a pastorale, a lyric joke. But one must be always conscious of the enormous land on which these people live and their proud loneliness. The action takes place on a Saturday afternoon and evening on a ranch in the southwest.

- Agnes de Mille, from her original Rodeo scenario

SCENE I

Rodeo: Saturday Afternoon – The Corral

Interlude: Retrospect

SCENE II

Saturday Night Dance

The Cowgirl	MARZIA MEMOLI
The Champion Roper	JACOB LARSEN
The Head Wrangler	LLOYD KNIGHT
The Ranch Owner's Daughter	SO YOUNG AN
Her Eastern Friends from Kansas City	AMANDA MOREIRA, ANNE SOUDER, LESLIE ANDREA WILLIAMS
Square Dance Caller	LLOYD KNIGHT
Cowhands	ALESSIO CROGNALE-ROBERTS, ZACHARY JEPPESEN, ANTONIO LEONE, MATTHEW SPANGLER, JUSTIN VALENTINE, RICHARD VILLAVERDE
Womenfolk	ANE ARRIETA, MEAGAN KING, DEVIN LOH

Music recorded at Younes and Soraya Nazarian Center for the Performing Arts,
California State University, Northridge.

*Rodeo by Aaron Copland © 1942 The Aaron Copland Fund for Music, Inc. Copyright renewed.

This arrangement © 2023 The Aaron Copland Fund for Music, Inc.

By permission of Boosey & Hawkes, Sole Licensee.

This production was made possible by the Martha Graham Dance Company and was presented with the cooperation of The De Mille Working Group, Anderson Ferrell, Director.

PROGRAM

This production of *Rodeo* was commissioned by Tee Scatuorchio and Michael Becker. The production was also made possible with significant co-commission support from the Annenberg Foundation, The Younes and Soraya Nazarian Center for the Performing Arts and the California State University of Northridge, and the 92nd Street Y, as part of 92NY's 150th anniversary celebration, in honor and continued support of Martha Graham's rich 92NY legacy.

INTERMISSION

CAVE

Choreography by HOFESH SHECHTER

Creative Producer DANIIL SIMKIN

Music by ÂME* AND HOFESH SHECHTER

Costumes by CALEB KRIEG

Lighting by YI-CHUNG CHEN

Choreography Assistant KIM KOHLMANN

World Premiere: April 6, 2022, New York City Center

SO YOUNG AN ANE ARRIETA MEAGAN KING
LLOYD KNIGHT JACOB LARSEN DEVIN LOH
MARZIA MEMOLI LORENZO PAGANO ANNE SOUDER
RICHARD VILLAVERDE LESLIE ANDREA WILLIAMS

CAVE was made possible with a significant commissioning grant from
The O'Donnell-Green Music and Dance Foundation.

Major support for CAVE was provided by Sharon Patrick, the Clayton-Royer Family Fund,
Monica Voldstad and Jeff & Susan Campbell and Barbara Goldstein.

Production support was provided by Vassar College.

Co-Producing support provided by Studio Simkin and Sharing Spaces.

*Samples of „Fiori" by Âme; Sample of "The Witness" by Âme & Karyyn. Frank Wiedemann and Kristian Beyer are members of the German collecting society GEMA and published by Innervisions GmbH.



Where Iowa news, music and culture meet.

• iPr.org • 90.9 & 95.3 fm • [iPr app](#)

NOTES ON THE REPERTORY

Errand Into the Maze (1947)

Errand into the Maze premiered in 1947 with a score by Gian Carlo Menotti, set design by Isamu Noguchi and starring Martha Graham. The duet is loosely derived from the myth of Theseus, who journeys into the labyrinth to confront the Minotaur, a creature who is half man and half beast. Martha Graham retells the tale from the perspective of Ariadne, who descends into the labyrinth to conquer the Minotaur. The current production of *Errand into the Maze* was created in reaction to the damage done to the sets and costumes by Hurricane Sandy. This version, stripped of the classic production elements, is meant to intensify our focus on the dramatic, physical journey of the choreography itself.

Panorama (1935)

Premiered in 1935, at the famed summer retreat in Bennington, Vermont, *Panorama* was considered to be experimental. It was 45 minutes long and used an “avant-garde” score by Norman Lloyd. The dance also featured 33 student dancers and evoked the power of the people to make change. *Panorama* was lost until 1992, when the sections of it performed tonight were discovered in an early film.

Rodeo

All the elements of our new production of Agnes de Mille’s *Rodeo* are designed to broaden the conversation about this iconic work of Americana while remaining true to de Mille’s humorous and heartfelt story about a young, independent misfit searching for love. The new dreamlike costumes by Oana Botez suggest a fond remembrance of time and place rather than the actuality. They invite us into an intimate sense of community while the digital art of Beowulf Boritt’s stage design calls up the vastness of the American southwest. Gabe Witcher’s new Bluegrass arrangement of the entire Copland score is a first and in a sense, returns the cowboy tunes borrowed by Copland for *Rodeo* to their roots. As part of *GRAHAM100*, the three-season celebration of the Graham Company’s 100th anniversary, we are interested in reframing iconic works of the 20th Century in ways that expand our views of that time and offer a more inclusive history. We hope our new production of *Rodeo*, which also features the most diverse cast to have ever performed the work, will resonate with today’s conversations about gender and inclusion while celebrating Agnes’s timeless and timely story about a young person, who feels unable to fit in, finding community on their own terms through dance.

-Janet Eilber

CAVE

In 2022, the versatile artist Hofesh Shechter created this work for and with our Company dancers while searching for the essence that makes crowds of people move (dance) together in a deeply primal and connected way. In *CAVE*, this essence is rendered so powerfully that it reaches beyond the dancing onstage to include and inspire our audiences. The result is a visceral, cathartic movement experience with an inescapable shared kinetic energy.



Proud Sponsor of
Living Room Recitals
for *80+ Years*

From first notes and fidgety concerts to show-stopping performances, we're here for every one of your musical milestones.

Level up with lessons, step up your instrument, or inspire others to play.

We've got everything you need to
Play Now, Play for Life.

Pianos • Band & Orchestra • Guitars & Ukuleles • Drums • Lessons • Repair • And More



WESTMUSIC
Play now. Play for life.

westmusic.com

Coralville • Marion
Davenport • Cedar Falls

ABOUT THE ARTISTS

MARTHA GRAHAM has had a deep and lasting impact on American art and culture. She single-handedly defined contemporary dance as a uniquely American art form, which the nation has in turn shared with the world. Crossing artistic boundaries, she collaborated with and commissioned work from the leading visual artists, musicians, and designers of her day, including sculptor Isamu Noguchi and composers Aaron Copland, Samuel Barber, and Gian Carlo Menotti.

Graham's groundbreaking style grew from her experimentation with the elemental movements of contraction and release. By focusing on the basic activities of the human form, she enlivened the body with raw, electric emotion. The sharp, angular, and direct movements of her technique were a dramatic departure from the predominant style of the time.

Graham influenced generations of choreographers that included Merce Cunningham, Paul Taylor, and Twyla Tharp, altering the scope of dance. Classical ballet dancers Margot Fonteyn, Rudolf Nureyev, and Mikhail Baryshnikov sought her out to broaden their artistry. Artists of all genres were eager to study and work with Graham—she taught actors including Bette Davis, Kirk Douglas, Madonna, Liza Minnelli, Gregory Peck, Tony Randall, Eli Wallach, Anne Jackson, and Joanne Woodward to utilize their bodies as expressive instruments.

During her long and illustrious career, Graham created 181 dance compositions. During the Bicentennial she was granted the United States' highest civilian honor, The Medal of Freedom. In 1998, *TIME Magazine* named her the "Dancer of the Century." The first dancer to perform at the White House and to act as a cultural ambassador abroad, she captured the spirit of a nation. "No artist is ahead of his time," she said. "He is his time. It is just that the others are behind the time."

Discover the Baird Difference



Private Wealth Management

We are proud to support Hancher Auditorium



The Vander Leest & Wenzel Group

319-365-3397 . 800-365-3397

thevlwgroup.com

vlwgroup@rwbaird.com

Discover the *Baird Difference*

©2023 Robert W. Baird & Co. Incorporated. Member SIPC.

I listen to you.

Serving Iowa City home buyers
and sellers with creativity
and attention to detail

Alan Swanson

319-321-3129

Blank & McCune Real Estate

506 E. College Street, Iowa City, IA 52240

Licensed to Sell Real Estate in Iowa

ABOUT THE ARTISTS

THE MARTHA GRAHAM DANCE COMPANY has been a leader in the evolving art form of modern dance since its founding in 1926. It is both the oldest dance company in the United States and the oldest integrated dance company.

Today, the Company is embracing a new programming vision that showcases masterpieces by Graham alongside newly commissioned works by contemporary artists. With programs that unite the work of choreographers across time within a rich historical and thematic narrative, the Company is actively working to create new platforms for contemporary dance and multiple points of access for audiences.

Since its inception, the Martha Graham Dance Company has received international acclaim from audiences in more than 50 countries throughout North and South America, Europe, Africa, Asia, and the Middle East. The Company has performed at the Metropolitan Opera House, Carnegie Hall, the Paris Opera House, Covent Garden, and the John F. Kennedy Center for the Performing Arts, as well as at the base of the Great Pyramids in Egypt and in the ancient Odeon of Herodes Atticus theater on the Acropolis in Athens. In addition, the Company has also produced several award-winning films broadcast on PBS and around the world.

Though Martha Graham herself is the best-known alumna of her company, the Company has provided a training ground for some of modern dance's most celebrated performers and choreographers. Former members of the Company include Merce Cunningham, Erick Hawkins, Paul Taylor, John Butler and Glen Tetley. Among celebrities who have joined the Company in performance are Mikhail Baryshnikov, Margot Fonteyn, Rudolf Nureyev, Maya Plisetskaya, Tiler Peck, Misty Copeland, Herman Cornejo, and Aurélie Dupont.

In recent years, the Company has challenged expectations and experimented with a wide range of offerings beyond its mainstage performances. It has created a series of intimate in-studio events, forged unusual creative partnerships with the likes of SITi Company, Performa, the New Museum, Barney's, and Siracusa's Greek Theater Festival (to name a few); created substantial digital offerings with Google Arts and Culture, YouTube, and Cennarium; and created a model for reaching new audiences through social media. The astonishing list of artists who have created works for the Graham dancers in the last decade reads like a catalog of must-see choreographers: Kyle Abraham, Aszure Barton, Sidi Larbi Cherkaoui, Lucinda Childs, Marie Chouinard, Michelle Dorrance, Nacho Duato, Mats Ek, Andonis Foniadakis, Liz Gerring, Larry Keigwin, Michael Kliën, Pontus Lidberg, Lil Buck, Lar Lubovitch, Josie Moseley, Richard Move, Bulareyaung Pagarlava, Annie-B Parson, Yvonne Rainer, Sonya Tayeh, Doug Varone, Luca Veggetti, Gwen Welliver, and Robert Wilson.

The current company dancers hail from around the world and, while grounded in their Graham core training, can also slip into the style of contemporary choreographers like a second skin, bringing technical brilliance and artistic nuance to all they do—from brand new works to Graham classics and those from early pioneers such as Isadora Duncan, Jane Dudley, Anna Sokolow, and Mary Wigman. "Some of the most skilled and powerful dancers you can ever hope to see," according to the *Washington Post* last year. "One of the great companies of the world," says *The New York Times*, while *Los Angeles Times* notes, "They seem able to do anything, and to make it look easy as well as poetic."

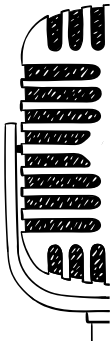
GreenState.org

Proud
Supporter
of the
Arts
GreenState Credit Union

✓ I'm not a robot



AND NEITHER ARE WE!



Real Instruments

Real People

Real Music



Listener-Supported Public Radio from Kirkwood Community College
www.kcck.org

ABOUT THE ARTISTS

JANET EILBER (*Artistic Director*) has been the Company's artistic director since 2005. Her direction has focused on creating new forms of audience access to Martha Graham's masterworks. These initiatives include contextual programming, educational and community partnerships, use of new media, commissions from today's top choreographers, and creative events such as the *Lamentation Variations*. Earlier in her career, Ms. Eilber worked closely with Martha Graham. She danced many of Graham's greatest roles, had roles created for her by Graham, and was directed by Graham in most of the major roles of the repertory. She soloed at the White House, was partnered by Rudolf Nureyev, starred in three segments of *Dance in America*, and has since taught, lectured, and directed Graham ballets internationally. Apart from her work with Graham, Ms. Eilber has performed in films, on television, and on Broadway directed by such greats as Agnes de Mille and Bob Fosse and has received four Lester Horton Awards for her reconstruction and performance of seminal American modern dance. She has served as Director of Arts Education for the Dana Foundation, guiding the Foundation's support for Teaching Artist training and contributing regularly to its arts education publications. Ms. Eilber is a Trustee Emeritus of the Interlochen Center for the Arts and was recently honored with a Doctorate of Fine Arts from the Juilliard School. She is married to screenwriter/director John Warren, with whom she has two daughters, Madeline and Eva.



LORENZO PAGANO (*Rehearsal Director*) is an internationally award-winning contemporary dancer. He joined the Martha Graham Dance Company in 2012 and became Assistant Rehearsal Director in 2023. Pagano was Assistant Choreographer for the Holiday Event in partnership with the Graham Company and Dior at Saks. Pagano has danced for the Lar Lubovitch Dance Company, La Compañía Nacional de Danza de Costa Rica, Liz Gerring Dance Company, and Sonya Tayeh Dance. He was honored with the Italian International Dance Award in 2016 and the Premio Nazionale La Sfera d'Oro in 2022.



LYOUD KNIGHT joined the Company in 2005 and performs the major male roles of the Graham repertory including in *Appalachian Spring*, *Embattled Garden*, *Night Journey*, and many others. *Dance Magazine* named him one of the "Top 25 Dancers to Watch" in 2010 and one of the best performers of 2015. Mr. Knight has starred with ballet greats Wendy Whelan and Misty Copeland in signature Graham duets and has had roles created for him by such renowned artists as Nacho Duato and Pam Tanowitz. He is currently a principal guest artist for The Royal Ballet of Flanders directed by Sidi Larbi Cherkaoui. Born in England and raised in Miami, he trained at Miami Conservatory of Ballet and New World School of the Arts.



ABOUT THE ARTISTS

XIN YING joined the Company in 2011 and performs many of Martha Graham's own roles including in *Herodiade*, *Errand into the Maze*, *Chronicle*, *Lamentation*, *Deep Song*, and *Cave of the Heart*. Ms. Xin has also danced solo roles in *Clytemnestra* and *Diversion of Angels*. She has been featured in works created for the Company by Nacho Duato, Pontus Lidberg, Annie-B Parson, Kyle Abraham, Liz Gerring, Maxine Doyle, and Bobbi Jene Smith. Ms. Xin also starred in the Chinese production *Dreams* and has been commissioned to create new choreography for Co•Lab Dance. Her Instagram account, on which she posts her own improvisations, has thousands of followers.



LESLIE ANDREA WILLIAMS grew up in Raleigh, North Carolina. Ms. Williams performs numerous featured roles in iconic Graham ballets. Some of her most notable roles have been dancing the solo *Deep Song*, and performing as the lead in *Chronicle*. Her performance in *Chronicle* earned her a naming in *The New York Times* "Best Dance of 2019" list. Ms. Williams's has also been profiled in *Dance Magazine*, *Teen Vogue*, *Psychology Today*, and *Marie Claire Taiwan*. Her work has been described in reviews as "hypnotic" and "larger than life." Ms. Williams is graduate of the Julliard School.



ANNE SOUDER joined the Company in 2015 and performs Martha Graham's own roles in *Dark Meadow Suite*, *Chronicle*, *Deep Song*, and *Ekstasis*. Roles have also been created for her by such luminaries as Marie Chouinard, Sidi Larbi Cherkaoui, Maxine Doyle, and Bobbi Jene Smith. Ms. Souder began her training in Maryville, Tennessee, and graduated from the Ailey/Fordham BFA program with a double major in dance and theology while performing works by Alvin Ailey, Ronald K. Brown, and more. She was also a member of Graham 2 and awarded a Dizzy Feet Foundation scholarship.



LAUREL DALLEY SMITH joined the Company in 2015. Performing principal roles in *Appalachian Spring*, *Steps in the Street*, *Errand into the Maze*, *Cave of the Heart*, and *Diversion of Angels*. Also creating new roles with contemporary choreographers Hofesh Shechter, Pam Tanowitz, Bobbi Jene Smith, Annie-B Parsons amongst others. Laurel guests internationally with award-winning LA/UK based Yorke Dance Project, performing work created on her by Yolande Yorke-Edgell and Sir Robert Cohan. Laurel recently created the role of Ariadne in Deborah Warner's world premiere of *Minotaur*, choreography by Kim Brandstrup.



ABOUT THE ARTISTS

SO YOUNG AN, a native of South Korea, joined the Company in 2016 and dances featured roles in Graham ballets as well as new works. Ms. An is the recipient of the International Arts Award and the Grand Prize at the Korea National Ballet Grand Prix. She has danced with Korean National Ballet Company, Seoul Performing Arts Company, and Buglisi Dance Theatre. She has also performed works by Yuri Grigorovich, Jean-Christophe Maillot, Mats Ek, Patricia Ruanne, and Samantha Dunster.



MARZIA MEMOLI from Palermo, Italy, joined the Company in 2016 and performs lead roles in Graham's *El Penitente*, *Steps in the Street*, and *Satyric Festival Song*, and works by Elisa Monte, Hofesh Shechter, Bobbi Jene Smith, Lar Lubovitch, Maxine Doyle, Andrea Miller, and Sidi Larbi Cherkaoui. In 2018 *Dance Spirit* said she "may be the ... Company's newest dancer, but her classical lines and easy grace are already turning heads." She performs for Twyla Tharp Dance in *In the Upper Room* and *Nine Sinatra Songs*. She graduated from Béjart's school, where she performed with the Béjart Ballet Lausanne.



JACOB LARSEN joined the Company in 2016 and performs many Martha Graham classics. He performs contemporary works by Sir Robert Cohen, Jenn Freeman, Pontus Lidberg, Andrea Miller, Hofesh Shechter, Sonya Tayeh, Pam Tanowitz, and Yin Yue. Mr. Larsen received a BFA from Marymount Manhattan College performing works by Paul Taylor, Twyla Tharp, Azure Barton, and others. He can also be seen on Hulu's *Up Here* choreographed by Sonya Tayeh. Follow him @jacoblarsn



ALESSIO CROGNALE-ROBERTS from Abruzzo, Italy, joined the Company in 2017 and dances featured roles in Graham's *Errand into the Maze*, *Embattled Garden*, *Every Soul is a Circus*, and *Diversion of Angels* as the Man in White as well as in works by Pontus Lidberg, Michelle Dorrance, Larry Keigwin, Bulareyaung Pagarlava, Micaela Taylor, Juliano Nunes, Sonya Tayeh, Hofesh Shechter, among others. Mr. Crognale-Roberts graduated with high honors from Centro Studi Coreografici Teatro Carcano in Milan and from the Graham School where he was a member of Graham 2.



ABOUT THE ARTISTS

RICHARD VILLAVERDE born and raised in Miami, FL, began dancing at the age of 13, privately coached by Maria Eugenia Lorenzo. Mr. Villaverde is a New World School of the Arts graduate and received a BFA from University of the Arts in Philadelphia, PA. Notably, he was a part of Arsenale della Danza 2012 at La Biennale di Venezia under the direction of Ismael Ivo. He later joined BalletX (2012–2021) where he was featured in works by Matthew Neenan, Dwight Rhoden, Nicolo Fonte, Penny Saunders, Cayetano Soto, Trey McIntyre, Jodie Gates, and Annabelle Lopez Ochoa. He performed at the Vail International Dance Festival, Ballet Sun Valley, Belgrade Dance Festival, as well as at Jacob's Pillow.



DEVIN LOH (*New Dancer*), from Fanwood, NJ, holds a BFA from the Conservatory of Dance at Purchase College, SUNY. She was named a recipient of the Bert Terborgh Award upon graduation for Leadership and Excellence in Dance. Shortly after, Ms. Loh continued her performance and pedagogical studies at the Martha Graham School, and performed with Graham 2. This is her first season with the Company.



ANTONIO LEONE (*New Dancer*) is a native of Salerno. In 2021, Mr. Leone enrolled in the Martha Graham School and joined the Graham 2 Company. His favorite Graham works are *Dark Meadow*, *Acts of Light*, and *Appalachian Spring Suite*. Mr. Leone studied at the Rudra Béjart School in Switzerland, where he performed works by Maurice Béjart, Michel Gascard, Julio Arozarena, and Tancredo Tavarez, among others.



MEAGAN KING (*New Dancer*) of Brooklyn, NY, is an Ailey/Fordham BFA graduate and LaGuardia H.S. alumna. Ms. King danced with Ailey II, receiving features in *Dance Spirit*, *The TODAY Show*, PIX11, NY12, and *Good Day Sacramento*, and was named BLOCH Young Artist. She performed at Holland Dance Festival and Jacob's Pillow Contemporary and choreographed for *Women/Create!* This is her first season with the Company.



ABOUT THE ARTISTS

ANE ARRIETA (*New Dancer*), dual citizen of Spain and the U.S., grew up in Rhode Island and trained at the Newport Academy of Ballet. She received a BFA in dance performance and pedagogy from the Hartt School at the University of Hartford, earning the Outstanding Senior Award. She has worked with choreographers Jacquelyn Buglisi, Pascal Rioult, Bryan Arias, Francesca Harper, and Colin Connor, and has been a member of Newport Contemporary Ballet, Buglisi Dance Theatre, and Graham 2. This is her first season with the Company.



ZACHARY JEPPESEN (*Apprentice*), raised in Southern Wisconsin, is an alumnus of The Juilliard School where he received a BFA in dance. He has had the pleasure of performing pieces by Alvin Ailey, Martha Graham, Jacquelyn Buglisi, Donald McKayle, Paul Taylor, Ohad Naharin, and many other choreographers. Before Juilliard, Zachary attended The Chicago Academy for the Arts where he studied under Randy Duncan and Patrick Simoniello.



MATTHEW SPANGLER (*Apprentice*) born and raised in Boulder, Colorado, began his dance training at the age of four and recently graduated with a BFA from The Juilliard School under the direction of Alicia Graf Mack and Mario Alberto Zambrano. While at Juilliard, he performed works by Ohad Naharin, Spenser Theberge, and Jermaine Spivey, Hofesh Shechter, and Aszure Barton, among others.



AMANDA MOREIRA (*Apprentice*), originally from Roxbury, NJ, received a BFA in dance with a concentration in modern from Marymount Manhattan College in 2022. She has performed works choreographed by Martha Graham, Twyla Tharp, Sidra Bell, Jessica Lang, and Jennifer Archibald. After graduating she joined Graham 2. This is her first year with the Company.



JUSTIN VALENTINE (*Apprentice*) is a member of Graham 2 after being Principal Dancer at Columbia Classical Ballet. Justin performed in many galas in five continents, taught master classes, and coached students preparing for competition. Formal training began at Valentina Kozlova Dance Conservatory of NY. He won gold medals in international competitions for ballet and contemporary dance before beginning his professional career.



ABOUT THE ARTISTS

STAFF

Executive Director	LaRue Allen
Artistic Director	Janet Eilber
Rehearsal Director.....	Ben Schultz
Rehearsal Director.....	Lorenzo Pagano
Rehearsal Director.....	Blakeley White-McGuire
General Manager	Simona Ferrara
Company Manager	Lauren Mosier
Director of Development Operations.....	A. Apostol
Director of Strategic Partnerships and Special Events	Fran Kirmser
Development Associate.....	Taylor Hollingsworth
Director of Marketing	Melissa Sherwood
Marketing Associate	Maclaine Lowery
Director of Martha Graham Resources	Joyce Herring
Production Supervisor	Chloe Morrell
Resident Lighting Designer	Yi-Chung Chen
Associate Lighting Supervisor	Becky Nussbaum
Wardrobe Supervisor	Gabrielle Corrigan
Costume Consultant	Karen Young
Director of School.....	Ashley Brown
Dean of Students and Government Affairs.....	Tami Alesson
Program Director/Director of Graham 2.....	Virginie Mécène
Program Director	Lone Larsen
Teens@Graham Program Director	Amélie Bénard
School Assistant	Ana Sanchez
Press Agent.....	Janet Stapleton

REGISSEURS

Miki Orihara
Virginie Mécène
Peggy Lyman
Peter Sparling
Blakeley White-McGuire
Elizabeth Auclair
Lone Larsen
Tadej Brdnik
Masha Maddux
Maxine Sherman
Martin Lofnes
Anne Souder
PeiJu Chien Pott
Amelie Bernard

ABOUT THE ARTISTS

BOARD OF TRUSTEES

Javier Morgado, *Chair*
Lorraine Oler, *Immediate Past Chair*
Barbara Cohen, *Vice Chair*
Inger Witter, *President*
Judith G. Schlosser, *Chair Emeritus*
LaRue Allen, *Executive Director*
Janet Eilber, *Artistic Director*
Amy Blumenthal
Ayse Dizioglu-Koyluoglu
Geoffrey D. Fallon
Russell Guthrie
Christine Jowers
Irina Nuzova
Nichole Perkins
Stephen M. Rooks
Lori Sackler
Lawrence Stein
Ellis Wood

NORTH AMERICAN REPRESENTATION

Rena Shagan Associates, Inc.
shaganarts.com

INTERNATIONAL REPRESENTATION

LaRue Allen, *Executive Director*
lallen@marthagraham.org

ALUMNI SEARCH

If you or someone you know has ever performed with the Martha Graham Dance Company or attended classes at the Martha Graham School, please send us names, addresses, telephone numbers, and approximate dates of membership. We will add you to our alumni mailing list and keep you apprised of alumni events and benefits. Call +1.212.229.9200 or e-mail info@marthagraham.org.

The Martha Graham Center of Contemporary Dance is a not-for-profit corporation, supported by contributions from individuals, corporations, foundations, and government agencies. Contributions in support of the Martha Graham Center will be gratefully received at the Martha Graham Center of Contemporary Dance, Inc., 55 Bethune Street New York, NY 10014, or visit www.marthagraham.org/contribute.

For more information, visit marthagraham.org

THREE ELECTRIC PERFORMANCES

featuring UI
students and faculty.

One vibrant campus
with creativity
at its heart.

This semester, join us for brilliant, diverse, eclectic artistry celebrating students, faculty, and staff across the performing arts.

Dance students, working with Professors Stephanie Miracle and Eloy Barragán—and with MFA student Katelyn Perez—will take to the Hancher stage with the iconic Martha Graham Dance Company. Theatre Arts students will bring a beautiful play to life under the direction of Professor Caroline Clay. And School of Music students will perform a new opera at Hancher with music composed by Professor William Menefield, who will also direct.

Each performance is emblematic of what's possible on a campus committed to collaborative, transformational arts experiences for artists and audiences alike.



MARTHA GRAHAM DANCE COMPANY GRAHAM100

PRESENTED BY HANCHER AUDITORIUM WITH
SUPPORT FROM UI DEPARTMENT OF DANCE

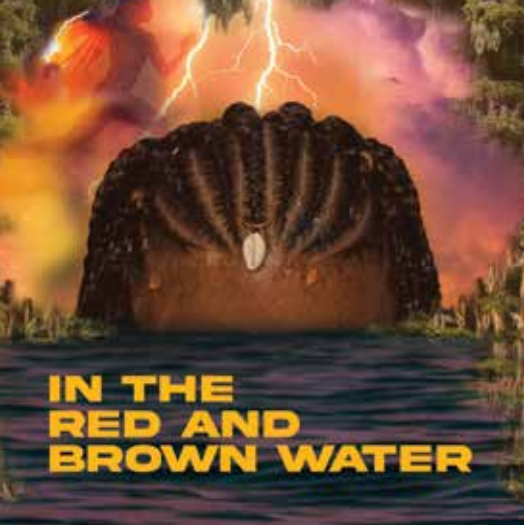
Friday, March 29
7:30 p.m.
Hancher Auditorium

An indispensable dance company celebrates 100 years, bringing its founder's classic works to the stage alongside new work by contemporary choreographers. Martha Graham—an icon among 20th century artistic icons—radically expanded the dance vocabulary, and her work has captivated audiences worldwide while influencing generations of artists.

*Thank you for joining us
tonight!*

PERFORMING
ARTS AT IOWA

SCHOOL OF MUSIC / DEPARTMENT OF THEATRE ARTS /
DEPARTMENT OF DANCE / HANCHER AUDITORIUM /
PERFORMING ARTS PRODUCTION UNIT



IN THE RED AND BROWN WATER

By Tarell Alvin McCraney
Directed by Caroline Clay

PRESENTED BY UI DEPARTMENT OF
THEATRE ARTS

**Friday–Sunday, April 12–14 &
Wednesday–Saturday, April 17–20**
Theatre Building

San Pere, Louisiana: Oya runs fast, but her collegiate future is placed on hold to care for her mother. Inspired by Federico García Lorca's *Yerma* and Yoruban cosmology, Tarell Alvin McCraney's *In the Red and Brown Water* is a lyrical offering at the intersection of ancestral myth and ritual about a young woman's coming-of-age navigating lovers, community, and her chosen path.

TICKETS

Adults \$20
Senior Citizens \$15
Youth & Non-UI Students \$10
UI Students \$5

FIERCE

PRESENTED BY HANCHER AUDITORIUM,
PERFORMING ARTS PRODUCTION UNIT,
AND UI SCHOOL OF MUSIC

Friday & Saturday
April 26 & 27
7:30 p.m.
Hancher Auditorium

An opera for the 21st Century, *Fierce* follows four teenage girls finding identity and purpose in the world as they write their college essays in a high school writers' workshop. The young women face striking internal challenges—the difficulties of high school popularity and social media, the weight of parental expectations, personal loss, and unstable lives at home—but come together to find community, self-empowerment, and the confidence to embrace new chapters.

TICKETS

Adults \$20
Youth & Non-UI Students \$10
UI Students \$5

→ MORE INFO AND TICKETS AT
PERFORMINGARTS.UIOWA.EDU

LifeCare is the difference!



Call me today for your personal tour
Steve Roe
 Executive Director

319-351-1720
 Learn more at www.oaknoll.com




An active LifeCare Life Plan community since 1995
 1 Oaknoll Court • Iowa City, IA 52246 • www.oaknoll.com • oaknoll@oaknoll.com • (319) 351-1720



The Hancher Season Cup allows patrons to take drinks purchased in the Stanley Café into the auditorium to enjoy during performances.

Purchase yours at the Box Office, the Hancher Showcase, or the Stanley Café.

JUST \$5

Only beverages purchased from the Stanley Café can be taken into the auditorium. The 2021–2022, 2022–2023, and 2023–2024 Season Cups can be used. Patrons should not bring beverages from home. Also, alcoholic beverages cannot be taken out of Hancher Auditorium in a Hancher Season Cup as this would violate “open container” restrictions.

THANK YOU

We thank our 2023–2024 Partners for their unwavering loyalty and crucial support. Their generosity enables us to bring the world’s finest performing artists to university students, staff, our community, and the region.

François M. & Doris E. Abboud

Terry & Johanna Abernathy
in honor of Chuck Swanson

Kent & Kay Ackerson

Lee & Kazi Alward

Barrie Anderson

Loretta Angerer

Anonymous Donors

Anonymous Family Foundation

Sarah Antin

Artemus Bush-Helen Jones Trust

Dale & Linda (1946–2023) Baker

Nora Lee Balmer (1928–2023)

Douglas & Linda Behrendt

Jo Ann Bell in memory of Jim Bell

John & Carrie Bernat

Loanna & Orville Bloethe/
HLV Community School Fund

Warren & Maryellen Boe

Susan & Sandy Boyd

Jeff & Sara Braverman

Mace & Kay Braverman

Kenneth G. Brown & Amy Kristof-Brown

Carolyn Brown & Jerry Zimmerman

Alicia Brown-Matthes

John & Ellen Buchanan

Deborah K. & Ian E. Bullion

Richard & Ann Burton

Mary K. Calkin

Norma & David Carlson

Wendy Carter & Don Heistad
in honor of Doris Preucil

Joe & Rachel Christopher

Charles Richard & Barbara S. Clark

James & Loretta Clark

Ralph H. & Marcia A. Congdon

Dale & Cyndy Crider

Brad & Peggy Davis

The Chris & Suzy DeWolf Family

William Dickinson

Peggy Doerge

Mary & Patrick Dreckman

Edward & Linda Dykstra

Jack & Nancy Evans

Everybody’s Whole Foods

Michael S. & Renee Favo

Dan Feldt in memory of Natalie Feldt

Robert & Karlen (1935–2023) Fellows

John & Randee Fieselmann

Ed & Patricia Folsom

Bruce Gantz

The Gazette



Miriam Gilbert
Luke & Hillary Granfield
Daryl K. & Nancy J. Granner
GreenState Credit Union
George A. & Barbara J. Grilley
Mitchell & Melanie Gross
Peter & Vera Gross
Brent Hadder
Leonard & Marlene Hadley
Hancher Showcase/Hancher Guild
Kevin & Pat Hanick
Bruce & Melanie Haupt
Vernon Hein Fund
Donald W. Heineking
Hills Bank and Trust Company
Albert B & Jean M. (1931–2022) Hood
H. Dee & Myrene Hoover
Jim & Judy Houghton
Michael & Jennifer Hummel
Richard & Judith Hurtig
Terry & Jone Johnson
Kris Jones
William & Susan Jones
Will & Wendy Keen
The Kerber Family
in memory of Richard E. Kerber, M.D.
Kenneth K. Kinsey Family Foundation

Jean Koch
John & Patricia Koza
Tim & Sarah Krumm
Jon & Carma Kuhl
Karl Kundel & Allison Kundel
Greg & Meredith Lamb
Mary Jo & John Langhorne
Robert J. & Sue B. Latham
Bryan & Jan Lawler
Michael & Chelle Lehman
Valdean (1935–2024) & Lois Lembke
Lensing Funeral & Cremation Service
Jerry & Carol Litton
Ed & Ann Lorson
Lowell A. Luhman, M.D.
Mark & Fran Lundy
Nancy Lynch
Little Village
Peter & Anne Matthes
Yvonne McCabe
McGrath Family of Dealerships
The McIntyre Foundation
John R. Menninger
Mary & Jim Merchant
Mary Mixdorf
Kevin & Julie Monson
Frank & Jill Morriss



Jerry & Judy Musser
Margaret Neumann
Neumann Monson Architects, Inc.
Jeffrey & Kristine Nielsen
Leslie & Mark Nolte / Nolte Academy
Oaknoll Retirement Residence
Gregg Oden & Lola Lopes
Michael W. O'Hara & Jane Engeldinger
Joan O'Kones
in memory of Harold & Annette O'Kones
OPN Architects, Inc.
Robert A. Oppliger
Gary & Nancy Pacha
Parsons Family
Dorothy Paul
Douglas & Linda Paul
Chuck Peters
Mary Ann Peters
Margaret Polson
John Raley/American Family Insurance
Mindy Ramsey
Robert & Cheryl Reardon
Alan & Amy Reed
Mark & Sheila Reed
Chip & Michelle Reeves
Chad & Erica Reimers
Herm & L. Dianne Reininga

David & Noreen Revier
The Rice & Terry Family
in memory of Tim Terry
Jean E. & Renée Robillard
Tom Rocklin & Barbara McFadden
Gerald & Nancy Rose
Jo Ellen Ross
Bill Rubright in loving memory
of Karen G. Rubright & Emilie J. Rubright
Jeff & Susan Sailors
Frank & Mary Scamman
Scheels
Steve & Janie Schomberg
Ralph Schultz Family Foundation
Charlotte & Rudy Schulz Director's Fund
Marvin & Helen Schumacher
Thomas R. Scott
Nancy J. Sereduck
Siroos Shirazi & Patti Walden
Shive-Hattery Architecture + Engineering
Richard & Vicki Siefers
John & Dyan Smith
The Stanford Family in memory of William
(1930–2023) & Marlene W. (1933–2021) Stanford
Daniel R. & Beth Holden Stence
Anna & Jeff Stone
Edwin & Mary Stone
Sue (1929–2023) & Joan Strauss

NEUMANN MONSON ARCHITECTS



Lyse Strnad & Tom Leavenworth
Kristin E. Summerwill
Susanne Summerwill & James Flitz
W. Richard & Joyce Summerwill
Mel & Diane Sunshine
Alan & Liz Swanson
The Chuck Swanson Executive Directorship
of Hancher Auditorium Fund
Think Iowa City
James & Robin Torner
Jeffrey R. & Tammy S. Tronvold
Dick & Buffie Tucker
Douglas & Vance Van Daele
Rhoda Vernon
Bill Waldie & Pat Heiden
Anne Wallace & William Gay
Larry & Michelle Weber

Stuart L. Weinstein, M.D. & Mrs. Lynn Weinstein
Paul Weller & Sara Rynes-Weller
Ryan & Amanda West
Stephen & Victoria West
West Music
LaDonna & Gary Wicklund
Candace Wiebener
Derek & Pamela Willard
Barbara Wilson & John Lammers
Sara & Sherwood Wolfson Educational Fund
Stephen Wolken, M.D. & Sue Montgomery
Wolken
George & Carrol Woodworth
Patty & Steve Yeater
Catherine Zaharis & Robert Michael
Deborah & Rodney Zeitler



RIGHT CARE AT THE RIGHT PLACE



UI QUICKCARE

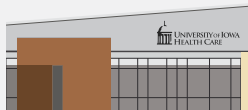
When your primary care provider isn't available, UI QuickCare treats patients with minor illnesses and injuries.

You can even see a provider from the comfort of your own home with a telehealth appointment.



HEALTH CONCERNS

- Earaches
- Eye Infections
- Bladder Infections
- Diarrhea, Nausea, Vomiting
- Rash
- Insect Bites
- Minor Burns
- Seasonal Allergies



UI URGENT CARE

UI Urgent Care treats more conditions than UI QuickCare, including minor injuries requiring X-rays, and can place stitches and administer IV fluids. **Urgent care also offers extended hours, offering a convenient way to receive care during evenings and weekends.**



HEALTH CONCERNS

In addition to conditions treated at UI QuickCare, UI Urgent Care can treat:

- Broken Bones
- Strains and Sprains
- Cuts and Scrapes
- Dehydration



EMERGENCY ROOM

Go to the emergency room if you have serious or life-threatening condition. If a person could die or be permanently disabled, it is an emergency.



HEALTH CONCERNS

- Head Injury
- Stroke
- Severe Bleeding
- Chest Pain
- Abdominal Pain
- Difficulty Breathing
- Severe Pain
- Newborn Fever
- Major Trauma
- Suicidal Thoughts

Learn more about same-day care options from UI Health Care.

→ uihc.org/same-day

Specializing in residential
real estate throughout the
Iowa City Area.



Tim Conroy
Broker-Partner

Blank and McCune,
The Real Estate Company
319-321-3679
Tim@timconroy.com
www.timconroy.com

Blank and McCune, The Real Estate Company
506 E. College Street, Iowa City, IA 52240
Tim Conroy is Licensed to Sell Real
Estate in the State of Iowa.



2023-2024