

A man from the chest up, wearing a blue and white horizontally striped polo shirt. His right arm is in a white, textured cast. The background is a solid light blue.

**DEAR  
EVAN  
HANSEN**

**DECEMBER 6-8, 2024**



**HANCHER AUDITORIUM**

**IOWA**

NAVIGATE THE DYNAMIC IOWA CITY MARKET WITH

# TIM CONROY

YOUR RESIDENTIAL REAL ESTATE EXPERT.



**TIM CONROY, BROKER-PARTNER**

**Blank & McCune Real Estate**

319-321-3679 | [TIM@TIMCONROY.COM](mailto:TIM@TIMCONROY.COM)

[WWW.TIMCONROY.COM](http://WWW.TIMCONROY.COM)



**Blank &  
McCune**  
REAL ESTATE

506 E. College Street, Iowa City, IA 52240

Tim Conroy is Licensed to Sell Real Estate in the State of Iowa.



CROSSROADS LIVE

presents

# DEAR EVAN HANSEN

Book by  
**STEVEN LEVENSON**

Music & Lyrics by  
**BENJ PASEK & JUSTIN PAUL**

MICHAEL FABISCH HATTY RYAN KING BRE CADE CAITLIN SAMS  
ALEX PHARO JEFF BROOKS GABRIEL VERNON NUNAG MAKENA JACKSON  
MICHAEL PEREZ MONICA BLUME JULIANNA BRAGA BLAKE EHRlichMAN  
JENNA KANTOR JARED SVOBODA

Scenic Design    Projection Design    Costume Design    Lighting Design    Sound Design  
DAVID KORINS    PETER NIGRINI    EMILY REBHOLZ    JAPHY WEIDEMAN    NEVIN STEINBERG

Casting  
**MURNANE CASTING**  
CHAD ERIC MURNANE, CSA  
AMBER SNEAD, CSA

Music Coordinator  
TALITHA FEHR

Vocal Arrangements &  
Additional Arrangements  
JUSTIN PAUL

Music Director  
MICHAEL HOPEWELL

Production Stage Manager  
ANNA KLEVIT

Company Manager  
AARON MARTIN

Tour Management  
CROSSROADS LIVE  
NORTH AMERICA

Production Manager  
GREGG DAMANTI

General Manager  
ANDREW TERLIZZI

Executive Producer  
JAYNA NEAGLE

Exclusive Tour Direction  
THE BOOKING GROUP  
MEREDITH BLAIR

Tour Marketing & Publicity  
BOND THEATRICAL

Social Media  
THINK TANK  
MARKETING

Direction Recreated by  
DANNY SHARRON  
MARK MYARS

Associate Music Supervisor  
BEN COHN

Choreography Recreated by  
MARK MYARS

Music Supervision, Orchestrations & Additional Arrangements  
ALEX LACAMOIRE

Original Broadway Production Choreography by  
DANNY MEFFORD

Original Broadway Production Directed by  
MICHAEL GREIF

Originally Produced on Broadway By Stacey Mindich  
Originally presented by Arena Stage – July 9, 2015 to August 23, 2015  
New York premiere at Second Stage – March 26, 2016 to May 29, 2016

*Dear Evan Hansen* is presented through special arrangement with MUSIC THEATRE INTERNATIONAL,  
New York, NY. [mtishows.com](http://mtishows.com)

# CAST



MICHAEL  
FABISCH



HATTY RYAN  
KING



BRE  
CADE



CAITLIN  
SAMS



ALEX  
PHARO



JEFF  
BROOKS



GABRIEL VERNON  
NUNAG



MAKENA  
JACKSON



MICHAEL  
PEREZ



MONICA  
BLUME



JULIANNA  
BRAGA



BLAKE  
EHRlichman



JENNA  
KANTOR



JARED  
SVOBODA

# CAST

(listed in alphabetical order)

Heidi Hansen.....BRE CADE  
Larry Murphy ..... JEFF BROOKS  
Evan Hansen.....MICHAEL FABISCH  
(Select performances) MICHAEL PEREZ  
Alana Beck.....MAKENA JACKSON  
Zoe Murphy ..... HATTY RYAN KING  
Jared Kleinman ..... GABRIEL VERNON NUNAG  
Connor Murphy.....ALEX PHARO  
Cynthia Murphy .....CAITLIN SAMS

## VIRTUAL COMMUNITY VOICES

JACOB ANDERSON, NAREE ASHERIAN, KARALYN CLARK, VITA DREW,  
ADAM DUNSON, AYLER EVAN, WILL HALEY, TODD HART, ROBERT HYATT,  
PAUL JOHNSON, BRANDON NIX, DANICA RUIZ,  
JOLANA SAMPSON-WILLIAMSON, CHRISTINE SHEBECK,  
CONNOR SIMPSON, KATE STEELE, NICOLE UNGER

## UNDERSTUDIES

*Standbys and understudies never substitute for players  
unless a specific announcement for the appearance is made at the time of  
the performance.*

Understudy for Evan Hansen, Connor Murphy, and Jared Kleinman: BLAKE EHRlichMAN; Understudy for Evan Hansen, Connor Murphy: MICHAEL PEREZ; Understudy for Heidi Hansen, Cynthia Murphy: JENNA KANTOR; Understudy for Heidi Hansen, Cynthia Murphy, Alana Beck: MONICA BLUME; Understudy for Alana Beck, Zoe Murphy: JULIANNA BRAGA; Understudy for Larry Murphy: JARED SVOBODA.

Dance Captain: MONICA BLUME

**Dear Evan Hansen will be performed with one 15-minute intermission**



The use of any recording device, either audio or video, and the taking of photographs, either with or without flash, is strictly prohibited by law. Please turn off all electronic devices such as cellular phones, beepers and watches prior to the beginning of the performance.



*Thank you to our 2024–2025  
Broadway Series Partners*

**THE CHRIS & SUZY DEWOLF FAMILY**

**VERNON HEIN FUND**

**JEFFREY & KRISTINE NIELSEN**

*Thank you to supporters of  
this evening's performance*

**GEORGE A. & BARBARA J. GRILLEY**

**BRUCE & MELANIE HAUPERT**

**ALAN & AMY REED**

**RHODA VERNON (1926-2024)**

**STUART L. WEINSTEIN, M.D.  
& MRS. LYNN WEINSTEIN**



# MUSICAL NUMBERS

## ACT ONE

"Anybody Have a Map?" .....	Heidi, Cynthia
"Waving Through a Window" .....	Evan, Company
"For Forever" .....	Evan
"Sincerely, Me" .....	Connor, Evan, Jared
"Requiem" .....	Zoe, Larry, Cynthia
"If I Could Tell Her" .....	Evan, Zoe
"Disappear" .....	Connor, Evan, Alana, Jared, Cynthia, Larry, Zoe
"You Will Be Found" .....	Evan, Company

## ACT TWO

"Sincerely, Me" (Reprise).....	Connor, Jared
"To Break in a Glove" .....	Larry, Evan
"Only Us" .....	Zoe, Evan
"Good for You" .....	Heidi, Alana, Jared, Evan
"You Will Be Found" (Reprise).....	Company
"Words Fail" .....	Evan
"So Big/So Small" .....	Heidi
"Finale" .....	Company

## MUSICIANS

Music Director, Keys: MICHAEL HOPEWELL  
Associate Music Director, Keys Cover: ALEX GUTIERREZ  
Violin/Concertmaster: JEROME KAVA  
Viola: E.R. SQUATRITO  
Cello: LYDIA PAULOS  
Guitar 1: PERRY COWDERY  
Guitar 2: JEFFERY DUNN  
Bass: ALEX SCHWARZ  
Drums: DANIEL SANTIAGO

Keyboard Programmer: RANDY COHEN, RANDY COHEN KEYBOARDS  
Ableton Programmers: ENRICO DE TRIZIO, SCOTT WASSERMAN



Band • Orchestra • Piano • Guitar • Repair • Lessons • Music Therapy

---

**West Music Coralville | 1212 5th Street, Coralville, IA**

# Your Local, Family-Owned Music Store for **Over** **80 Years**

*Bring in this program  
for \$5 OFF your next  
West Music purchase!*



# WHO'S WHO

**MICHAEL FABISCH** (*Evan Hansen*).

A Minnesota born actor/singer, Michael recently earned his BFA from the University of Michigan. Michael would like to extend his heartfelt gratitude to his brilliant mentors, his loving family and his caring friends for their immense support.

**HATTY RYAN KING** (*Zoe Murphy*).

National Tour debut! Previous credits include Anna in *Frozen: A Musical Spectacular* (Disney Cruise Line), Belle in *Beauty and the Beast* (Studio Tenn), Cathy in *The Last 5 Years* (Everblue Arts). Huge thanks to Murnane Casting, The Price Group, and Mom. @hattyryanking.

**BRE CADE** (*Heidi Hansen*) is happy

to be here! Past favorite credits include: *Rabbit Hole* (Becca), *Next to Normal* (Diana), *Into the Woods* (Baker's Wife), *Evita* (Eva Peron), *Cabaret* (Sally Bowles), and *Hedwig & the Angry Inch* (Yitzhak). Love to Zac. @brefreakincade

**CAITLIN SAMS** (*Cynthia Murphy*).

National Tours: *Charlie and the Chocolate Factory*, *Elf*, *Flashdance*. Regional: *Beautiful*, *CATS*, *Legally Blonde*, *Escape to Margaritaville*, *Brigadoon*, *Kinky Boots*, and many more. BFA from WMU. Big thanks to my family. Big love to Dale. @unsophiticaitlin caitlinsams.com

**ALEX PHARO** (*Connor Murphy*) is

thrilled to make his national tour debut! Proud Auburn University deferred student. Credits: *The Wedding Singer* (Robbie), *Natasha,*

*Pierre, and the Great Comet of 1812* (Anatole). Shout out to Mom, Dad, Big Cheese, Larrie, DC, and Zola! @alexpharo

**JEFF BROOKS** (*Larry Murphy*). He/

him. National Tours: *Chicago, A Bronx Tale, Bullets Over Broadway, Disney's Beauty & the Beast, Fiddler on the Roof, The Sound of Music, Oklahoma!*. Netflix's *The Watcher*. Thanks to Todd, Bob and everyone at ATB, my loving family, friends, and Stef. @bathrobedbrooks

**GABRIEL VERNON NUNAG** (*Jared Kleinman*). Professional debut!

Proud AMDA LA alumni: BFA. Much love to my family, friends, teachers, and Take 3 Talent! Regional: *Spring Awakening* (Moritz), *In The Heights* (Benny). "I will carve my own path for myself." @gabrielnunag

**MAKENA JACKSON** (*Alana Beck*)

is a New York City based performer, making her national tour debut in *Dear Evan Hansen!* TV: *Up Here* (Hulu). Makena would like to thank her endless support system for always believing in her. @makenajacksonn

**MICHAEL PEREZ** (*Alternate Evan Hansen; u/s Connor Murphy*) is

honored to join DEH! Film/TV: Amazon Prime's *Uncle Frank*, Hallmark's *To Her With Love*, Netflix's *Insatiable*, AMC's *Halt and Catch Fire*, Sundance *When the Streetlights Go On*. Thanks to his family, Stewart Talent, Rikki Dale Management, and Appa. @mikey\_prez



# Where Iowa news, music and culture meet.

• [iPr.org](http://iPr.org) • 90.9 & 95.3 fm • [iPr app](#)



# WHO'S WHO

**MONICA BLUME** (*u/s Heidi Hansen, Cynthia Murphy, Alana Beck; Dance Captain*). Some favorite credits include: *Cirque Musica Holiday Wonderland* (National Tour), *Beautiful* (Weathervane Theatre), *Kinky Boots* (Fulton Theatre/Maine State Music Theatre), *Blue Bloods* (CBS). Many thanks to Nicole at MMV. All my love to Justin. For my cousin, Matthew. #youwillbefound

**JULIANNA BRAGA** (*u/s Alana Beck, Zoe Murphy*) is thrilled to be joining *Dear Evan Hansen* for her national tour debut! Montclair State BFA Musical Theatre '24 graduate. Recent credits include *Seussical* (Gertrude McFuzz) and *Into the Woods* (Rapunzel). Thanks to my loved ones & teachers for everything. @juliannabragad

**BLAKE EHRlichman** (*u/s Evan Hansen, Connor Murphy, Jared Kleinman*) is ecstatic to be making his national tour debut! A graduate of Marymount Manhattan College. Huge thanks to the entire DEH team! Love to Mom, Dad, Brandon, family and friends—for always believing. @blakejehrllichman

**JENNA KANTOR** (*u/s Heidi Hansen, Cynthia Murphy*) is thrilled to join the DEH family. Past roles: Trina (*Falsettos*), Tanya (*Mamma Mia!*), Lady of the Lake (*Spamalot*), Aldonza (*Mancha*), Paulette (*Legally Blonde*), Velma (*Chicago*). She is a performing arts physical therapist at jennakantorpt.com. She thanks Ryan, family, friends, and pets. jennakantor.com

**JARED SVOBODA** (*u/s Larry Murphy*). Past credits include *Bat Out of Hell* (Vegas Residency); *Jersey Boys* and *Newsies* (The Rev); *Footloose* (NCL), fans of documentaries may recognize him as Jesus in Morgan Freeman's *Story of God*. Jared is a proud graduate of NYU Tisch.

**STEVEN LEVENSON** (*Book*). Steven is a Tony Award-winning playwright, screenwriter, and television writer and producer. His plays include *If I Forget*, *Core Values*, *Seven Minutes In Heaven*, and *The Language of Trees*. He wrote the book for the musical, *Dear Evan Hansen*, which won six Tony Awards, including Best Book and Best Musical, as well as the Olivier Award for Best New Musical.

**BENJ PASEK & JUSTIN PAUL** (*Music & Lyrics*). Oscar, Grammy, and Tony Award-winning songwriters/producers Benj Pasek & Justin Paul are best known for their work on *La La Land*, *The Greatest Showman*, and *Dear Evan Hansen*. Other recent credits include *Only Murders in the Building*; *Spirited*; *Lyle, Lyle Crocodile*; *Aladdin*; *Trolls*; *Harlem*; *Dear Edward*; *Smash*; *The Flash*; and *Pink: All I Know So Far*. Previous theatre credits include *Dogfight*, *A Christmas Story*, *James and the Giant Peach*, and *Edges*.

**MICHAEL GREIF** (*Original Director*). Five-time Tony nominated director with three new musicals this season on Broadway: *Days of Wine and Roses*, *The Notebook*, and *Hell's Kitchen*. Broadway: *Rent*, *Next to*

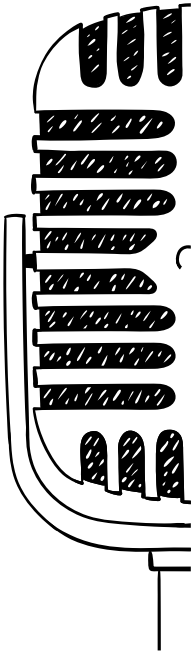


I'm not a robot



***AND NEITHER ARE WE!***

---



***Real Instruments***

***Real People***

***Real Music***



Listener-Supported Public Radio from Kirkwood Community College

[www.kcck.org](http://www.kcck.org)

# WHO'S WHO

*Normal, Grey Gardens, Dear Evan Hansen, If/Then, War Paint*. Other: *Make Believe* (Second Stage); *Our Lady of Kibeho* and *Angels in America* (NY's Signature Theatre), *The Low Road, Machinal, Dogeaters, Romeo and Juliet* (The Public).

**DANNY MEFFORD** (*Original Choreographer*) has choreographed three Tony Award winning Best Musicals: *Kimberly Akimbo, DEH, Fun Home*. Directing: *Shrek* (national tour); *25<sup>th</sup> Annual Spelling Bee* (Kennedy Center); *Becoming Liv Ullman* (NY Fringe); *The Gorgeous Nothings, The Fitzgeralds of St. Paul* (upcoming projects). Off-Broadway highlights: *Love's Labour's Lost* (Drama Desk nomination, Best Choreography), *Miss You Like Hell, February House, Much Ado About Nothing, Good Person of Szechwan*. International: *The Sound of Music* (tour). TV: *Rise, Dickinson, Fleischman Is in Trouble*. MFA in Acting from Brown University/Trinity Rep.

**ALEX LACAMOIRE** (*Music Supervisor / Orchestrator*) has won 4 Grammys, 3 Tonys, and an Emmy for his work on *Dear Evan Hansen, Hamilton, In the Heights*, and FX's *Fosse/Verdon*. Music director, arranger and/or orchestrator credits include: Broadway revival of *Sweeney Todd, Message in a Bottle, 9 to 5, Legally Blonde*, and *Wicked*. Film/TV credits include: Netflix's *Vivo* (composer), *In The Heights*, and *Tick, Tick...Boom!* (Executive Music Producer).

**DANNY SHARRON** (*Direction Restager*). He/him. Danny is a director of new plays and musicals, committed to creating work by and about the LGBTQ+ community. He is currently the U.S. Associate Director for the Broadway revival of *Cabaret*, and previously oversaw four companies of *Dear Evan Hansen* (Broadway/London/Toronto/1st Nat'l Tour) as the show's Senior Associate Director. NYC-based. Proud SDC member. Full credits: [dannyssharron.com](http://dannyssharron.com)

**BEN COHN** (*Associate Music Supervisor*). Broadway: Music Director for *Death Becomes Her* (upcoming), *Dear Evan Hansen, Once Upon A One More Time*. Assistant Conductor for *Wicked*. Music Director for Clay Aiken and Stephanie J. Block. Conducted *Sunset Boulevard* and *Tick, Tick... Boom!* at the Kennedy Center. Ithaca and NYU Grad. Lives In NYC with his husband and son.

**MARK MYARS** (*Direction/Choreography Restager*). Broadway Resident Director/Choreographer: *Death Becomes Her*. Broadway Associate Choreographer: *Dear Evan Hansen* (National Tour, London), *The Cher Show, My Fair Lady* (National Tour, London), *SpongeBob Squarepants, War Paint, If/Then* (National Tour). International Dance Supervisor: *Wicked* (National Tour, Chicago, London, Japan, Germany, Australia). Film/TV Associate Choreographer: *Isn't It Romantic, Schmigadoon*.



Proud  
**Supporter**  
of the **Arts**

**GreenState Credit Union**



# WHO'S WHO

Mark is a guest musical theater teacher and teaches Master Classes nationwide. [markmyars.com](http://markmyars.com)

**DAVID KORINS** (Scenic Design). Broadway: *The Who's Tommy*, *Here Lies Love* (Tony nom), *Hamilton* (Tony nom), *Beetlejuice* (Tony nom), *Dear Evan Hansen*, *Just For Us*, *Mrs. Doubtfire*, *War Paint* (Tony nom), *Bandstand*, *Misery*, *The Great Society*, *Motown the Musical*, *Vanya and Sonia and Masha and Spike*, *Annie*, *Bring It On*, *Godspell*, and *Passing Strange*. Television: *Grease: Live!* (Emmy Award), 91st and 94th Academy Awards (Emmy nom).

**PETER NIGRINI** (Projection Design) is one of Broadway's pioneering projection designers. His work includes *Hell's Kitchen*, *The Who's Tommy*, *Here Lies Love*, *MJ*, *Ain't Too Proud*, *Beetlejuice*, *Dear Evan Hansen*, *The SpongeBob Musical*, *A Doll's House Part 2*, and *Fela!*. In other venues and forms including *Ground* (Public Theater), *Lucia de Lammermoor* and *Don Giovanni* (Santa Fe Opera), *The Grace Jones Hurricane Tour*, and *Deep Blue Sea* for Bill T. Jones/Arnie Zane Dance.

**EMILY REBHOLZ** (Costume Design). Broadway: *Gutenberg! The Musical!*; *Jagged Little Pill* (Tony Award nomination); *Frankie and Johnny in the Clair de Lune*; *Getting the Band Back Together*; *Indecent*; *Oh, Hello* on Broadway; *If/Then*; *Vanya and Sonia and Masha and Spike*; *Bloody Bloody Andrew Jackson*. Off-Broadway: Lincoln Center, Roundabout, NYTW, Public Theater,

LAByrnth Theatre Company, Playwrights Horizons, Second Stage, NY City Center, among others. Opera: The Santa Fe Opera House and Opera Theater St. Louis. MFA: Yale

**JAPHY WEIDEMAN** (Lighting Design). 20 Broadway shows: *The Heart of Rock n Roll*, *SHUCKED!*, *The Piano Lesson*, *Summer 1976*, *Dear Evan Hansen*, *The Visit*, *The Nance*, *Of Mice and Men*, *Airline Highway*, *Lobby Hero*, *Bright Star*, *Charlie and the Chocolate Factory*. West End: *Dear Evan Hansen* (Noel Coward), *A Nice Fish* (Harold Pinter Theatre), and *Blackbird* (Albery Theatre). Production and lighting designer for Liz Phair's *Exile in Guyville* national tour, and for Hasan Minhaj's *The King's Jester* at Radio City and National Tour. Five Tony Nominations for lighting design.

**NEVIN STEINBERG** (Sound Design). Broadway: *The Notebook*, *Sweeney Todd* 2023 Revival (Tony Award), *TINA – The Tina Turner Musical* (Tony nomination), *Hadestown* (Tony award), *Hamilton*, *Dear Evan Hansen*, *Freestyle Love Supreme*, *The Cher Show*, *Bandstand*, *Bright Star*, *It Shoulda Been You*, *Mothers and Sons*, *Rodgers+Hammerstein's Cinderella* (Tony nomination), *The Performers*. Over thirty other Broadway productions with Acme Sound Partners and five additional Tony nominations: *The Gershwin's Porgy and Bess*, *Bengal Tiger at the Baghdad Zoo*, *Fences*, *Hair*, *In The Heights*.

# COMMUNITY STARTS WITH HEART



At **McGrath**, selling cars is just part of our journey. Our true mission is to enhance the lives of our guests and strengthen our community. For four generations, we've been committed to fostering a community that puts heart at the center in Eastern Iowa.

# WHO'S WHO

**MURNANE CASTING** (*Casting*) is a first-class office in New York City specializing in casting theatre, film, and television projects nationwide. We focus on developing new works and collaborating with emerging creators. Our mission is to curate exceptional ensembles of artists in a relaxed and imaginative casting environment. Learn more at [MurnaneCasting.com](http://MurnaneCasting.com).

**KELSEY VENTER** (*Assistant Director/Assistant Choreographer*). Venter was a member of the First National Tour of *Dear Evan Hansen*, serving as the tour's dance captain and as the cover for Heidi Hansen and Cynthia Murphy. As a performer, she has worked at theaters across the country including the Old Globe, the American Conservatory Theater, Guthrie Theatre and the Kennedy Center. Venter earned her BA in Theater from SDSU and her MFA from the American Conservatory Theater. [kelseyventer.com](http://kelseyventer.com)

**TALITHA FEHR** (*Music Coordinator*) has worked on over 75 national and international productions and tours since 2005. Highlights include: *Sister Act*, *Mamma Mia!*, *School of Rock*, *Come Fly Away*, *Phantom of the Opera*, *Love Never Dies*, and *Priscilla Queen of the Desert* as well as the 2010 Olympic Ceremonies in Vancouver. She dedicates her work on *Dear Evan Hansen* to the memory of her mentor, Sam Lutfiyya.

**RANDY COHEN** (*Keyboard Programmer*). Cohen Keyboards has programmed or provided keyboard tech services for over 100 Broadway shows including *Hamilton*, *Book of Mormon*, *Dear Evan Hansen*, *In The Heights*, and *Kinky Boots*. TV: *Sesame Street*, *Electric Company*. Thanks to Sam, Tim, and Nick.

**MICHAEL HOPEWELL** (*Music Director*). Off-Broadway: *Once We Lived Here* (U.S. premiere); Tours: *My Fair Lady*, *The Phantom of the Opera*, *White Christmas*, *Dirty Dancing*. Regional: Tuacahn Amphitheater, John W. Engeman Theater, Gateway Playhouse; Recordings: Stage Stars Records (*Urinetown*, *The Wizard of Oz*, *How To Succeed...*). Love to my family. Endless thanks to Ben, Talitha, and DAR. For Mom, who taught me how.

**ANNA KLEVIT** (*Production Stage Manager*) is elated to be part of *Dear Evan Hansen!* National Tours: *Annie*, *My Fair Lady*, *Rudolph*. Selected regional credits: *What We Talk About...* (Old Globe); *Into the Woods*, *Matilda*, *Fireflies*, (South Coast Repertory); *Memphis*, *Once on This Island* (Moonlight Amphitheatre). This one's for Mom and Dad.

**KATY GENTRY** (*Assistant Stage Manager*). National tours: *Annie*. Selected regional credits: *Theater of the Mind*; *Rattlesnake Kate*; *Quixote Nuevo* (Denver Center); *Sound of Music*, *Sweeney Todd* (Asolo Rep); *Tiger Style* (Olney Theatre Center). Katy holds a BFA from the University of Central Florida.

*I listen to you.*

Serving Iowa City home buyers  
and sellers with creativity  
and attention to detail

Alan Swanson  
319-321-3129  
Blank & McCune Real Estate  
506 E. College Street, Iowa City, IA 52240

Licensed to Sell Real Estate in Iowa

## Discover a Financial Partner Who Puts You First



Private Wealth  
Management

We are proud to support Hancher Auditorium



The Vander Leest & Wenzel Group  
319-365-3397 . 800-365-3397  
thevlwgroup.com  
vlwgroup@rwbaird.com

Discover the *Baird Difference*

©2024 Robert W. Baird & Co. Incorporated. Member SIPC.



# WHO'S WHO

**AARON MARTIN** (*Company Manager*) is from Birmingham, AL, and excited to be on the DEH team! National Tours (ACM): *Annie*, *Anastasia*. Regional: Maine State Music Theatre (ACM); Florida Repertory Theatre (CM); Berkshire Theatre Group, Weston Playhouse (Intern). Thanks to the Crossroads Team, Katy, Anna, and Patrick. Love to family and friends.

**LINDSAY KAPLAN** (*Assistant Company Manager*) is thrilled to be on the road with DEH! Previous tour: *CATS*! Lindsay is a recent graduate from The Theater School at DePaul University. She would like to thank friends and family for always supporting her! IG @ lindsaykaplan

**GREGG DAMANTI** (*Production Manager*). A 24-year theater veteran, Gregg started as a production stage manager for Busch Entertainment, and later became the production manager for *Blue Man Group* in NYC. National tour credits include the first national of *On Your Feet!*, *CATS*, the first national of Lincoln Center's *My Fair Lady*, *Pretty Woman*, and now *Dear Evan Hansen*. "Thank you to Jen and Ripley who I miss dearly while on the road, and love coming home to them both."

**ANDREW TERLIZZI** (*General Manager*) comes to Crossroads Live after a 17-year touring career, 10 of which were with TROIKA Entertainment. Current GM credits: *Dear Evan Hansen*, *Pretty Woman: The Musical*. Select other

credits: Jimmy Buffett's *Escape to Margaritaville*, *Bodyguard the Musical*, and *Priscilla Queen of the Desert*. He holds a B.F.A. from the University of North Carolina School of the Arts.

**THE BOOKING GROUP** (*Tour Direction*) has represented 28 Tony award-winning best musicals and plays. Current tours include *The Book of Mormon*, *Chicago*, *Come From Away*, *Dear Evan Hansen*, *Hadestown*, *Hamilton*, *Mamma Mia!*, *Mean Girls*, *MJ The Musical*, *Mrs. Doubtfire*, *Parade*, *Pretty Woman*, *SIX*, *Some Like It Hot*, *TINA – The Tina Turner Musical*, and *The Wiz*.

**BOND THEATRICAL** (*Tour Marketing & Publicity*) is an independently-owned theatrical booking, marketing and publicity company representing award-winning Broadway shows and live entertainment properties. BOND connects artists and audiences by forming strategic, authentic and profitable partnerships between producers and presenters across North America. For a complete list of current projects, please visit [BondTheatrical.com](http://BondTheatrical.com)

**NEURO TOUR** (*Physical Therapy*). Carolyn Lawson PT, founder and CEO of NEURO TOUR & Neurosport (Physical Therapy), global leaders in entertainment and performing arts medicine. We are honored to be part of this amazing touring company *Dear Evan Hansen*. NEURO TOUR, keeping performers happy, healthy, and on stage.

# WHO'S WHO

**MUSIC THEATRE INTERNATIONAL** (MTI) is one of the world's leading theatrical licensing agencies, granting theatres from around the world the rights to perform the greatest selection of musicals from Broadway and beyond. Founded in 1952 by composer Frank Loesser and orchestrator Don Walker, MTI is a driving force in advancing musical theatre as a vibrant and engaging art form. MTI works directly with the composers, lyricists and book writers of these musicals to provide official scripts, musical materials and dynamic theatrical resources to over 70,000 professional, community and school theatres in the US and in over 60 countries worldwide. MTI is particularly dedicated to educational theatre and has created special collections to meet the needs of various types of performers and audiences. MTI's Broadway Junior™ shows are 30- and 60-minute musicals for performance by elementary and middle school-aged performers, while MTI's School Editions are musicals annotated for performance by high school students. MTI maintains its global headquarters in New York City with additional offices in London (MTI Europe) and Melbourne (MTI Australasia).

**JAYNA NEAGLE** (*Executive Producer*). For Cirque du Soleil: *'Twas the Night Before, Paramour* (Broadway, Hamburg); *The Wiz* (NBC production). For BASE Entertainment: *Arrabal* (Buenos Aires, Toronto), *Jersey Boys* (Johannesburg, Asian tour), *Priscilla Queen of*

*the Desert* (São Paulo), *The Lion King* (Singapore), Jerry Mitchell's *Peepshow* (Las Vegas), *Wayne Brady: Making Sh%@ Up* (Las Vegas).

**CROSSROADS LIVE** (*Producer & Tour Management*) brings together some of the world's top producers of live entertainment, now all under one banner. With offices in London, New York, Washington, D.C., Sydney, and Melbourne—our global platform ensures the best-loved titles from Broadway and the West End can be embraced by audiences around the world. Crossroads Live North America, under the leadership of Angela Rowles, is an innovative, full-service theatrical production company delivering the Broadway experience to audiences in North America and beyond. Our 2024–2025 Season: *Annie; Dear Evan Hansen; Dr. Seuss' How The Grinch Stole Christmas! The Musical; Pretty Woman; The Phantom of the Opera* (Asia); *TINA – The Tina Turner Musical*.

---

## STAFF FOR DEAR EVAN HANSEN

---

### FOR CROSSROADS LIVE NORTH AMERICA EXECUTIVE PRODUCER

Jayna Neagle

### GENERAL MANAGER

Andrew Terlizzi

Associate General Manager ..... Melanie Cahill

### PRODUCTION MANAGER

Gregg Damanti

Assistant Production Manager.... Suzayn MacKenzie-Roy

---

### COMPANY MANAGER

Aaron Martin

Assistant Company Manager ..... Lindsay Kaplan

---

### TOUR MARKETING & PUBLICITY

BOND THEATRICAL

bondtheatrical.com

DJ Martin Temah Higgins Mollie Mann

Marc Viscardi Wendy Roberts

Bailey Ford Elisabeth Reyes

**TOUR DIRECTION**  
**THE BOOKING GROUP**  
 Meredith Blair

Rich Rundle, Brian Brooks  
 Jonathan Pearson and Maryruth Grabez  
 thebookinggroup.com

**CASTING**  
**MURNANE CASTING**  
 Chad Eric Murnane, CSA  
 Amber Snead, CSA  
 Nathaniel Riccio

**PRODUCTION STAGE MANAGER** ..... **Anna Klevit**  
 Assistant Stage Manager ..... Katy Gentry  
 Dance Captain ..... Monica Blume  
 Associate Scenic Designer ..... Richie Oulette & Javier  
 Ameijeiras  
 Production Carpenter ..... G.E. Simmons Falk  
 Costume Coordinator ..... Hayley King  
 Hair & Makeup Coordinators ..... Liz Printz, Nina Job  
 Assistant Costume Coordinator ..... Daniella Pineda  
 Production Stitcher ..... Aislinn Smith, Mia Mooney  
 Associate Lighting Designer ..... Ken Wills  
 Moving Light Programmer ..... Jeremy Goldenberg  
 Production Electrician ..... Joel Bulthuis  
 Associate Sound Designer ..... Mackenzie Ellis  
 Assistant Sound Designer ..... Jamie Davis  
 Production Audio ..... Alec Harris  
 Associate Projection Designer ..... Kate Ducey  
 Projection/Video Programmer ..... Sean Hooper  
 Video Animator ..... Zoey Crow  
 Production Video ..... Lorenzo Lagola, Jordan Brown,  
 Tristan Van Tine  
 Assistant Keyboard Programmer ..... Sam Starobin, Tim  
 Crook,  
 Nick Schenkel  
 Guitar Programmer ..... Dillon Kondor  
 Virtual Voices Produced by ..... Todd Hart/Vegas Voices  
 Virtual Voices Mixed by ..... Ian Kagey  
 Production Assistant ..... Alex Magallanes

**HEAD CARPENTER** ..... **Shane Lowry**  
 Flyman ..... Matthew Lamers  
 Deck Carpenter ..... Alyssa Cargill  
 Head Props ..... Ani Inman  
 Head Electrician ..... Kyle Musson  
 Assistant Electrician - Video ..... Jessie Tossey  
 Assistant Electrician - FOH ..... Aaron Kurland  
 Head Audio ..... Mitchel Rieth  
 Assistant Audio ..... Meg Schelling  
 Wardrobe Supervisor ..... Melina Hernandez  
 Crew Swing ..... Jake Gomez  
 Physical Therapy Company ..... NEURO TOUR Physical  
 Therapy, Inc.  
 Insurance ..... EPIC Insurance Brokers  
 Social Media ..... Think Tank Marketing  
 Social Media Captains ..... Jenna Kantor, Jessie Tossey  
 Tour Marketing & Publicity Office ..... BOND Theatrical/  
 Nileshea Alexander, Tia Altinay, Jenny Bates, Kolten Bell,  
 Melissa Cohen, Jesse Daniels, Steph Kelleher, Harrison  
 Mootoo,  
 Scotland Newton, Laura Rizzo, Madison St. Amour,  
 Linda Stewart, Jacob Stuckelman, Hannah Wallace  
 Production Photography ..... Evan Zimmerman for  
 MurphysMade  
 Merchandise Provider ..... Creative Goods  
 Merchandise Manager ..... Gena By

**CROSSROADS LIVE NORTH AMERICA**

Chief Executive Officer ..... Angela Rowles  
 Executive Producer ..... Jayna Neagle  
 Executive Producer ..... Kori Prior  
 Vice President of People Operations ..... Charisse Fontes  
 Vice President of Finance ..... Brian Jacob  
 Vice President of Marketing ..... Michael Yuen-Killick  
 Senior General Manager ..... Andrew Terlizzi  
 Director of Production ..... Heather Chockley  
 Director of Booking and Engagements ..... Tyler Soltis  
 Production Manager ..... Gregg Damanti  
 General Manager ..... Deana Marie Kirsch  
 Engagement Manager ..... Barrett Newman  
 Warehouse Manager ..... Corey Howard  
 Associate General Manager ..... Melanie Cahill  
 Associate General Manager ..... Emily Miu  
 Assistant Production Manager ..... Suzann MacKenzie-Roy  
 Assistant Production Manager ..... Drew Neitzew  
 Production Accounting Manager ..... Sheila Lewis  
 Production Accountant ..... Travis Huebel  
 Staff Accountant ..... Electra Walker  
 Executive Assistant to the CEO ..... Alissa Klusky  
 Assistant Warehouse Manager ..... Joshua Cookson  
*Learn more about Crossroads Live North America and  
 our team: [www.xroadslive.com](http://www.xroadslive.com)*

**CREDITS**

Scenery by TTS Studios. Lighting equipment from PRG.  
 Sound equipment by MASQUE. Video equipment by  
 4Wall. Rigging by Phoenix Lighting and Rigging. Rehearsal  
 Studio: Pearl Studios, NYC. Trucking by JANCO. Touring  
 Company Lobby Signage by Express Signs in Freder-  
 ick, MD.

**SPECIAL THANKS**

Dear Evan Hansen rehearsed at Pearl Studios in New  
 York, NY. Technical Rehearsals and Previews held at the  
 Tobin Center in San Antonio, TX.

Dear **Evan Hansen** is proud to collaborate with:  
**Crisis Text Line.** In crisis? Text HELLO to 741741 for free,  
 24/7 crisis support.

**The Jed Foundation (JED),** a nonprofit that exists to pro-  
 tect emotional health for our nation's teens and young  
 adults. [Jedfoundation.org](http://Jedfoundation.org)

@DearEvanHansen  
[www.dehtour.com](http://www.dehtour.com)



Backstage Employees are represented by  
 the International Alliance of Theatrical Stage  
 Employees (or I.A.T.S.E.).



The Director and Choreographer are members  
 of the **STAGE DIRECTORS AND CHOREOGRAF  
 SOCIETY**, a national theatrical labor union.



**United Scenic Artists • Local USA 8**  
 of the I.A.T.S.E. represent  
**the Designers & Scenic Artists  
 for the American Thea**

**WARNING**

The photographing or sound recording of any perfor-  
 mance or the possession of any device for such photo-  
 graphing or sound recording inside this theatre, without  
 the written permission of the management, is prohibited  
 by law. Violators may be punished by ejection and viola-  
 tions may render the offender liable for money damages.

MEET  
YOUR  
FELLOW  
HANCHER  
PATRONS

---

JO ANN BELL



# “It’s a beautiful thing to support and experience Hancher in different ways!”

– Jo Ann Bell

---

Jo Ann Bell is grateful for the amazing memories she has made at Hancher Auditorium. A lifelong Iowan, she has been a champion of sharing the Hancher experience with others for more than 10 years.

“Hancher is a gift to our community and to Iowa,” says Jo Ann, a retired pediatric nurse. “The culture and experience of live entertainment of this quality brings fulfillment to thousands of lives. It gives us so many opportunities to experience world-class shows without the need to travel.”

The Joffrey Ballet’s world premiere Nutcracker performance and gala celebration in 1987 remain one of Jo Ann’s favorite memories from the 50 years she has lived in the Iowa City area.

“The first Nutcracker was so bright and beautiful—it’s one of my favorites.”

About 10 years ago, Jo Ann and her husband, Jim, began making an annual donation to Hancher and inviting friends to accompany them to performances. Since Jim’s death in 2021, Jo Ann has supported a Broadway Series performance in his memory each year. She is pleased with how Hancher’s vision

is evolving and progressing and has generously included Hancher in her estate plans.

“Going to Hancher is always a happy event!” says Jo Ann. “Jim and I experienced so many excellent musicals, ballets, and other performances—I want to share the joy.”

Jo Ann radiates her love of culture and entertainment by gifting Hancher tickets to others for birthdays and Christmas. In addition, she and seven of her friends are regulars who raise a glass together in the Stanley Café before the curtain goes up.

“Experiences make better gifts than stuff,” says Jo Ann. “Hancher tickets are a way to make memories. It’s a beautiful thing to support and experience Hancher in different ways!”

.....

by Ruth Paarmann

*Growing up in Eastern Iowa, freelance writer Ruth Paarmann attended The Band Extravaganza as a teen and later played in Hancher with the Hawkeye Marching Band. Her favorite shows include Cats, Carmen, Wynton Marsalis, and Kristin Chenoweth, among others.*

---

➔ LEARN MORE AT [HANCHER.UIOWA.EDU/PATRON-PROFILES](https://hancher.uiowa.edu/patron-profiles)



Hancher's 2024-2025

# BROADWAY SERIES

## DEAR EVAN HANSEN

THE TONY AWARD-WINNING BEST MUSICAL

DECEMBER 6-8



## HADESTOWN

BROADWAY'S TONY AND GRAMMY-WINNING BEST MUSICAL

BY ANAÏS MITCHELL

ORIGINALLY  
DIRECTED BY RACHEL CHAVKIN

JANUARY 24-26



Broadway Series Partners:

THE CHRIS & SUZY DeWOLF FAMILY    VERNON HEIN FUND    JEFFREY & KRISTINE NIELSEN

**"HILARIOUS, SPLASHY  
AND UNMISTAKABLY BY TINA FEY!"**

*AgeLine*

# MEAN GIRLS

**MARCH 7-9**

**"ROOF-RAISING!  
TOOK BROADWAY BY STORM."**

*THEATRE*

# Tina

THE TINA TURNER MUSICAL

**MAY 30-JUNE 1**



**30 BREATHTAKING YEARS ONE WORLDWIDE PHENOMENON**



# Riverdance

THE NEXT GENERATION  
30

**MAY 9-11**

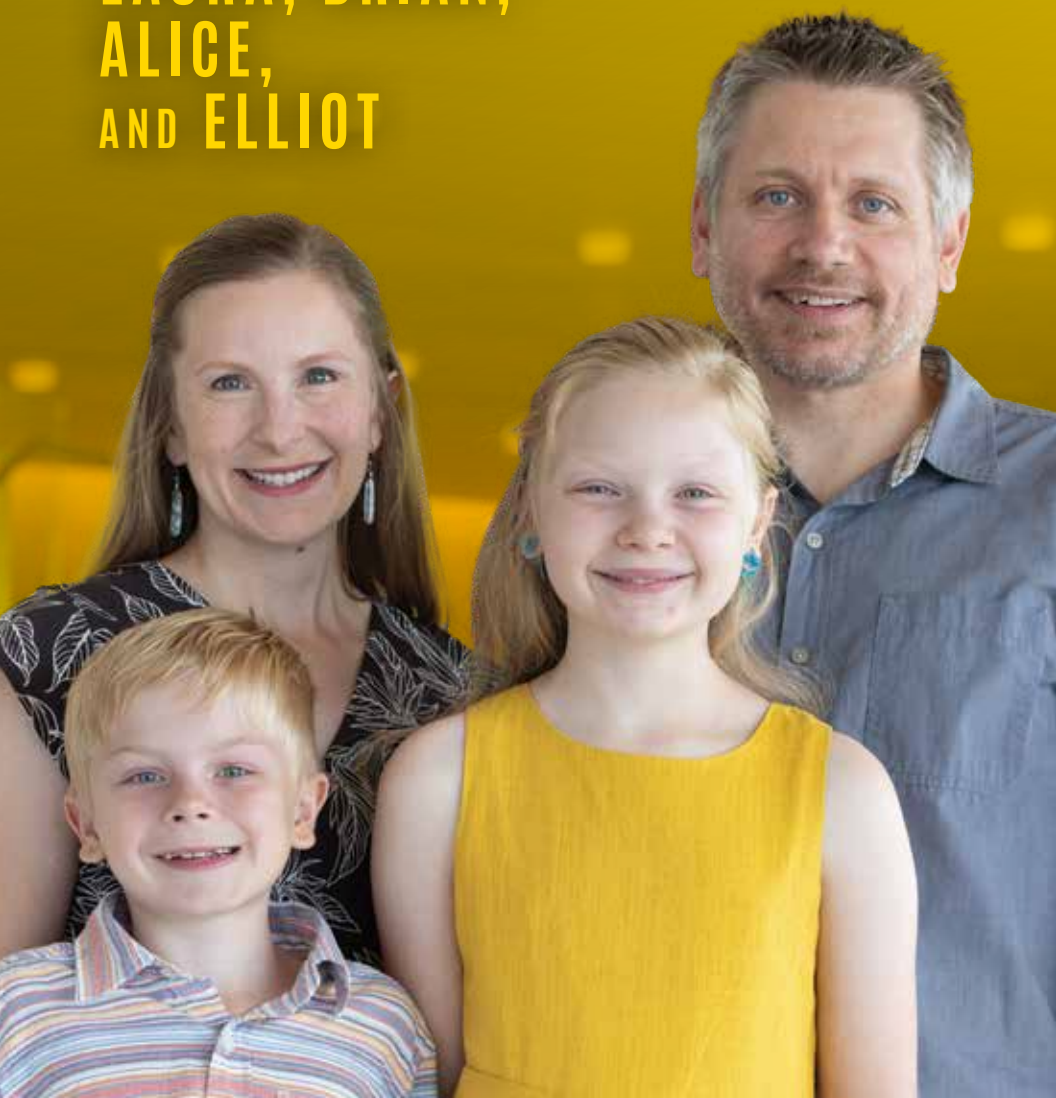


Full details at [hancher.uiowa.edu/Broadway](http://hancher.uiowa.edu/Broadway)

# MEET YOUR FELLOW HANCHER PATRONS

---

THE  
UMLAH FAMILY  
LAURA, BRIAN,  
ALICE,  
AND ELLIOT



**“Hancher’s access to world-class performances, as well as educational offerings and outreach for all ages, makes it vital to the community and state.”**

– Laura Umlah

---

Hancher has a way of shaping lives. For Laura and Brian Umlah and their children, its presence has sculpted their past, present, and future as a family. It all started when Laura was a child, performing her annual dance recitals at Hancher.

“I have fantastic memories of dancing on the Hancher stage and feeling the rush of adrenaline looking into the audience,” says Laura. “Those experiences and attending shows like *Cats* and *Rent* shaped my love for the performing arts.”

Flash forward to her college days, when she and Brian met while performing with the University of Iowa Symphony Orchestra. Laura and Brian will never forget playing Verdi’s *Requiem* with a chorus of hundreds standing behind them. Brian also remembers the thrill of playing the opening solo trumpet notes of Mahler’s Fifth Symphony on Hancher’s stage.

Now, they are passing the wonder of Hancher on to their children.

“We are excited to share our love for the performing arts with Alice and Elliot,” says Brian. “Alice is carrying on the family tradition of performing dance recitals at Hancher, and they

both regularly attend shows with us.”

When the family attends performances today, the couple loves to see their kids laughing and dancing in their seats at shows like the comedic Les Ballets Trockadero de Monte Carlo and *Hairspray*.

“It’s exciting to see the next generation building a love for the performing arts,” says Laura.

“Hancher’s access to world-class performances, as well as educational offerings and outreach for all ages, makes it vital to our community and state,” says Laura. “The community’s support enables Hancher to continue enriching our community and area schools—from elementary through university—by giving students the opportunity to engage with and learn from world-renowned artists.”

.....  
by Ruth Paarmann

*Growing up in Eastern Iowa, freelance writer Ruth Paarmann attended The Band Extravaganza as a teen and later played in Hancher with the Hawkeye Marching Band. Her favorite shows include Cats, Carmen, Wynton Marsalis, and Kristin Chenoweth, among others.*

---

➔ LEARN MORE AT [HANCHER.UIOWA.EDU/PATRON-PROFILES](https://hancher.uiowa.edu/patron-profiles)





Celebrating 50 years of quality Suzuki music instruction for students of all ages. Life enhancing opportunities from preschool through career preparation.



319.337.4156

[www.preucil.org](http://www.preucil.org)

Financial Aid Opportunities Available



The Hancher Season Cup allows patrons to take drinks purchased in the Stanley Café into the auditorium to enjoy during performances.

Purchase yours at the Box Office, the Hancher Showcase, or the Stanley Café.

**JUST \$5**

*Only beverages purchased from the Stanley Café can be taken into the auditorium. The 2021-2022, 2022-2023, and 2023-2024 Season Cups can be used. Patrons should not bring beverages from home. Also, alcoholic beverages cannot be taken out of Hancher Auditorium in a Hancher Season Cup as this would violate "open container" restrictions.*

# 2024-2025 HANCHER PARTNERS

## *Thank you.*

We thank our 2024–2025 Partners for their unwavering loyalty and crucial support. Their generosity enables us to bring the world’s finest performing artists to university students, staff, our community, and the region.

François M. & Doris E. Abboud

Terry & Johanna Abernathy  
in honor of Chuck Swanson

Kent & Kay Ackerson

Lee & Kazi Alward

Barrie Anderson

Loretta Angerer (1924–2024)

Anonymous Donors

Artemus Bush-Helen Jones Trust

Dale & Linda (1946–2023) Baker

Douglas & Linda Behrendt

Jo Ann Bell in memory of Jim Bell

John & Carrie Bernat

Loanna & Orville Bloethe/  
HLV Community School Fund

Warren & Maryellen Boe

Paula O. Brandt

Jeff & Sara Braverman

Kay Braverman in memory  
of Mace Braverman

Amy Kristof-Brown & Ken Brown

Alicia Brown-Matthes

John & Ellen Buchanan

Richard & Ann Burton

Mary K. Calkin (1925–2024)

Norma & David Carlson

Wendy Carter & Don Heistad  
in celebration of the 50th Anniversary  
of the Preucil School

Joe & Rachel Christopher

City of Iowa City

Charles Richard & Barbara S. Clark

Nicholas & Kay Colangelo

Dale & Cyndy Crider

Brad & Peggy Davis

The Chris & Suzy DeWolf Family

William Dickinson

Peggy Doerge

Mary & Patrick Dreckman

Edward & Linda Dykstra

Jack & Nancy Evans

Everybody’s Whole Foods

Michael S. & Renee Favo

John & Randee Fieselmann

Ed & Patricia Folsom

Bruce Gantz

The Gazette

Miriam Gilbert





Graduate Iowa City  
Luke & Hillary Granfield  
GreenState Credit Union  
George A. & Barbara J. Grilley  
Mitchell & Melanie Gross  
Peter & Vera Gross  
Brent Hadder  
Leonard & Marlene Hadley  
Hancher Showcase/Hancher Guild  
Kevin & Pat Hanick  
John Harper  
Bruce & Melanie Hauptert  
Vernon Hein Fund  
Donald W. Heineking  
Hills Bank  
Albert B. & Jean M. (1931–2022) Hood  
H. Dee & Myrene Hoover  
Jim & Judy Houghton  
Michael & Jennifer Hummel  
Richard & Judith Hurtig  
Terry & Jone Johnson  
Larry G. & Ann Howard Jones  
Vocal Residency  
Kris Jones  
William & Susan Jones  
Will & Wendy Keen  
Kevin & Mary Jo Keith

Kids Go to Hancher Fund  
Kenneth K. Kinsey Family Foundation  
Larry & Sandy Klosterman  
Jean Koch  
John (1945–2024) & Patricia Koza  
Tim & Sarah Krumm  
Jon & Carma Kuhl  
Karl Kundel & Allison Kundel  
Mary Jo & John Langhorne  
Robert J. & Sue B. Latham  
Bryan & Jan Lawler  
Michael & Chelle Lehman  
Valdean (1935–2024) & Lois Lembke  
Lensing Funeral & Cremation Service  
Russ Lenth & Jane DeWitt  
Jones Lewis Charitable Fund  
Little Village  
Jerry & Carol Litton  
Ed & Ann Lorson  
Lowell A. Luhman, M.D.  
Mark & Fran Lundy  
Nancy Lynch  
Peter & Anne Matthes  
Yvonne McCabe  
David McCartney & James Petersen  
McGrath Family of Dealerships



The McIntyre Foundation  
 John R. Menninger  
 Mary & Jim Merchant  
 Mary Mixdorf  
 Kevin & Julie Monson  
 Frank & Jill Morriss  
 Jerry & Judy Musser  
 Margaret Neumann  
 Neumann Monson Architects, Inc.  
 Jeffrey & Kristine Nielsen  
 Leslie and Mark Nolte / Nolte Academy  
 Oaknoll Retirement Residence  
 Gregg Oden & Lola Lopes  
 Michael W. O'Hara & Jane Engeldinger  
 Bertha Olin & the Olin Family  
 OPN Architects, Inc.  
 Gary & Nancy Pacha  
 Parsons Family  
 Douglas & Linda Paul  
 Chuck Peters  
 Mary Ann Peters  
 Bob Rakel  
 John Raley/American Family Insurance  
 Robert & Cheryl Reardon  
 Alan & Amy Reed

Chip & Michelle Reeves  
 Dr. Ronald & Sue Reider  
 Herm & L. Dianne Reininga  
 David & Noreen Revier  
 The Rice & Terry Family  
 in memory of Tim Terry  
 Jean E. & Renée Robillard  
 Tom Rocklin & Barbara McFadden  
 Gerald & Nancy Rose  
 Jo Ellen Ross  
 Bill Rubright in loving memory  
 of Karen G. Rubright & Emilie J. Rubright  
 Jeff & Susan Sailors  
 Frank & Mary Scamman  
 Steve & Janie Schomberg  
 Ralph Schultz Family Foundation  
 Charlotte & Rudy Schulz Director's Fund  
 Marvin & Helen Schumacher  
 Thomas R. Scott  
 Nancy J. Sereduck  
 Aaron & Lisa Shileny  
 Shive-Hattery Architecture + Engineering  
 Richard & Vicki Siefers  
 John & Dyan Smith  
 Jim Spevak  
 Daniel R. & Beth Holden Stence



NEUMANN MONSON ARCHITECTS



Anna & Jeff Stone  
Edwin & Mary Stone  
Strauss Family  
Lyse Strnad & Tom Leavenworth  
Kristin E. Summerwill  
Suzanne Summerwill & James Flitz  
W. Richard & Joyce Summerwill  
Diane & Mel Sunshine  
Alan & Liz Swanson  
The Chuck Swanson Executive  
Directorship of Hancher Auditorium Fund  
Mary Susan Taylor  
Think Iowa City  
James & Robin Torner  
Dick & Buffie Tucker  
Douglas & Vance Van Daele  
Rhoda Vernon (1926–2024)  
Bill Waldie & Pat Heiden  
Anne Wallace & William Gay

Stuart L. Weinstein, M.D.  
& Mrs. Lynn Weinstein  
Paul Weller & Sara Rynes-Weller  
Stephen & Victoria West  
West Music  
Ryan & Amanda West  
LaDonna & Gary Wicklund  
Ellen M. Widiss  
Candace Wiebener  
Derek & Pamela Willard  
Barbara Wilson & John Lammers  
James & Lena Wockenfuss  
Sara & Sherwood Wolfson  
Educational Fund  
Steve Wolken & Sue Montgomery Wolken  
George & Carrol Woodworth  
Patty & Steve Yeater  
Catherine Zaharis & Robert Michael  
Deborah & Rodney Zeitler



Arctic Monkeys The Nadas Purgatory  
Bella Moss Spoon Pieta Brown Modest Mouse  
Phantogram Hozier Shovels & Rope Alvvays  
Jack White St. Vincent Hinds Brother Trouble  
Leon Bridges Beck Soccer Mommy Mt. Joy  
Jason Isbell The Smiths Cage The Elephant  
The Killers Nathaniel Rateliff & The Night S  
Jimmy Eat World Father John Misty Bright  
Vampire Weekend Avett Brothers Elizabeth  
Radiohead Fall Out Boy Order Blond  
House of Leaves Green Day  
King Gizzard & The Lizard Wizard Well  
Goth Boyz Maggie  
Young Thug Head A  
Flamez Cal  
Weezer Tokin  
Cold Kings of Leon Fe  
The Cure Salt Fox Talking Heads Billy Str  
The Last Dinner Party Fontaines D.C. Wea  
Orville Peck JD McPherson beabadoobee  
The Clash Surf Zombies Suki Waterhouse  
Michigander Black Pumas MJ Lenderman  
Yola The Cure Dickie Ray L  
Flin

# Iowa's Alternative Music Station

studione.

nights & weekends on 90.9 fm  
anytime at [iprstudioone.org](http://iprstudioone.org) & in the app

KCRG WELCOMES YOU BACK TO  
**Hancher**



YOUR TRUSTED LOCAL  
**NEWS**  
SOURCE

**Download the KCRG-TV9  
News and Weather App**

**TO GET FAST  
AND ACCURATE  
ALERTS WHEN  
NEWS BREAKS**



**WE HOPE YOU ENJOY THE SHOW**



**WEEKDAYS AT 9:00AM**


---

**BUSINESS OWNERS**

**To be featured on  
Everyday Iowa, contact**

**[kcrg-localsales@graymedia.com](mailto:kcrg-localsales@graymedia.com)**



A woman with short, light-colored hair, wearing a white button-down shirt and a necklace, stands in a room with floral wallpaper and framed pictures. She is smiling and has her hands clasped in front of her. The room features a wooden staircase railing on the left and several framed pictures on the wall, including two oval ones and two rectangular ones.

**WE'RE  
HERE  
TO MAKE  
ALL OF  
IOWA  
BETTER**

**Patti**  
Iowa City

**IOWA**  
HEALTH CARE