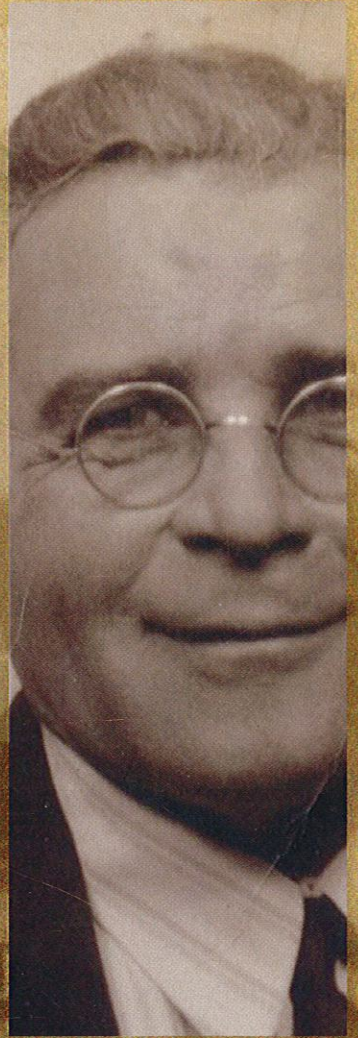


WORKING GROUP THEATRE, *THE BROKEN CHORD*
APRIL 12-14, 2013



*You're in
good Hands.*



Celebrate life's special moments
with a Lazare Diamond.

Available exclusively in Iowa City at...

 THE LAZARE DIAMOND®
*The world's most beautiful diamond**

HANDS
JEWELERS

SINCE 1854

109 E. Washington • Downtown Iowa City • 319-351-0333 • 800-728-2888 • www.handsjewelers.com

Working Group Theatre

The Broken Chord

Friday and Saturday, April 12-13, 7:30 PM
Sunday, April 14, 2 PM

Englert Theatre



Iowa Center for the Arts
The University of Iowa

Great artists. Great audiences.

HANCHER
performances



The Broken Chord

by Jennifer Fawcett

with Working Group Theatre

directed by Sean Christopher Lewis

CAST (Alphabetical)

Martin Andrews	Nurses Aide/Doctor
Elizabeth June Bergman	Nurses Aide
Tim Budd	Jacob
Maggie Conroy	Christine
Kristy Hartsgrove Mooers	Amy
Saffron Henke*	Helen
Kathy Maxey	Louise
Christopher Okiishi	Chuck
Rip Russell	Jerry
Janet Schlapkohl	Ellen

COMPANY

Sean Christopher Lewis	Director/Sound Design
Jennifer Fawcett	Playwright
Shawn Ketchum Johnson	Scenic Design
Courtney Schmitz Watson	Lighting Design
Rachel Potthoff	Stage Manager
Maria Vorhis	Assistant Director
K. Lindsay Eaves, Diviin Huff, Brooke LeWarne	Nurses Aides

*Saffron Henke appears with permission of the Actors Equity Association

The Broken Chord was created through interviews, conversations and improvisations with: Martin Andrews, Amy Lynn Bar, Tim Budd, Jennifer Fawcett, Kristy Hartsgrove Mooers, Elizabeth June Bergman, Shawn Ketchum Johnson, Kate Krohn, Sean Christopher Lewis, Tori Morgensai, Maria Vorhis, and John Watkins.

In the making of this play, interviews were conducted with: Gary Recker and Linda Thomae Recker; Steve and Pam O'Neil; Amanda Miller of the Alzheimer's Association; Kathleen Buckwalter, PhD, RN, FAAN; Jan Petrick; Dona Saforek; Nancy Adams Cogan; Ron Clark, Jody Hovland; Dean Sue Curry, PhD; Sarah Neary of Iowa City Hospice; and Arlys Thompson.

The Broken Chord project is made possible in part by a grant from the Association of Performing Arts Presenters and MetLife Foundation All-In: Re-imagining Community Participation Program and a grant from the Iowa Arts Council. The performances are supported by the Englert Theatre, Oaknoll Retirement Residence, and the F. Wendell Miller Fund.

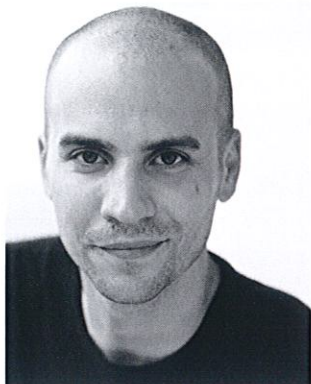
the artists

Martin Andrews (Nurses Aide)

Martin Andrews is an actor, voice teacher, and theatre facilitator. In 2009 he co-founded Working Group Theatre where he has helped to create new plays that have been published in the *New York Times Magazine* and called "... some of the most

important political theatre of the decade" by the *Huffington Post*. He was the core creator of The Broken Chord Project, a year-long examination of Alzheimer's Disease carried out through interviews with patients, doctors and caregivers; improvisation and storytelling classes with those suffering from dementia; and service as bedside Hospice aides for individuals dying from Alzheimer's Disease. He is the creator and director of "Was the Word," a monthly spoken word, storytelling, and music series that raises money for human service organizations.

In 2010 he created "Make it Better, Iowa," a Theatre of the Oppressed training series for LGBT youth dealing with harassment. He has taught at the K-12 and college level for the last 15 years, developing curriculum in History and Classics, Theatre, Human Rights, and Theatre of the Oppressed. Martin is a certified teacher of Fitzmaurice Voicework, and was co-creator and co-director of "Freedom and Focus: The First International Fitzmaurice Voicework Conference" in Barcelona, Spain. His work has received support from the Association of Performing Arts Presenters/Met Life Foundation All-In: Re-imagining Community Participation Program, the National Endowment for the Humanities, the Iowa Arts Council, the University of Iowa, and the United States Department of Justice.



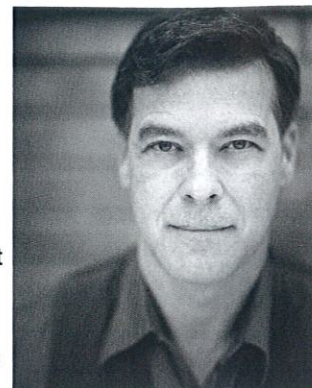
Elizabeth June Bergman (Nurses Aide)

Elizabeth is an independent movement-based artist and educator based out of Iowa City, Iowa. She holds a BA from DeSales University in Pennsylvania and a MFA from the University of Iowa. Elizabeth has had her creative work produced and taught across Iowa, in Minneapolis, Omaha, the Dominican Republic, New York City, San Antonio, Lawrence, Kansas, Philadelphia, and most recently San Juan, Puerto Rico. Elizabeth often organizes dance concerts and solo performances; she participates in other arts events locally and nationally, collaborating often with artists of other mediums. Here in Iowa City she is teaching a range of movement forms to many ages at Heartland Yoga, in the UI Youth Ballet program, and at Willowwind Montessori. She is honored to be working with Working Group Theatre on this project. www.elizabethjunebergman.com



Tim Budd (Jacob)

Tim Budd last appeared with Working Group Theatre in the company's production of *Mayberry* last spring. More recent work includes roles in *Walking the Wire*, *The Exit Interview*, *The Santaland Diaries*, and *True West*, all at Riverside Theatre. He will also be acting this summer in two productions for Riverside Theatre in the Park. An Iowa native, Tim finished his studies toward an MFA in acting at the University of Iowa and, when he's not on the stage, works full-time at Prairie Lights Books.



Maggie Conroy (Christine)

Maggie Conroy is a playwright and actor. Her one woman shows include *Sailing into Iowa* and *The Short History of a Colonial Dame*. Her play *The Tag Sale Project* has been produced at Riverside Theatre. She has performed her monologues with Working Group Theatre's "Was the Word." Maggie is the dramaturg for Global Express, a yearly theatrical event with writers from the International Writing Program.



Jennifer Fawcett (Playwright)

Jennifer is the Associate Artistic Director of Working Group Theatre. For WGT she has written *The Toymaker's War*, *Atlas of Mud*, *Odysseus, Iowa* (with Sean Lewis) and *Telling: Iowa City* (with Jonathan Wei), performed in *Mayberry*, *Rust*, *Denali*, *Atlas of Mud*, and *Odysseus, Iowa*, and co-directed *Telling: Iowa City* and *Drinks by the Pool*. She



was the NNPN Emerging-Playwright-In-Residence at Curious Theatre Company (Denver) and is the winner of the National Science Playwriting Award from the Kennedy Center. A graduate of the University of Iowa MFA Playwrights Workshop, Jennifer's plays have been produced at the Tennessee Women's Theatre Project (Nashville), The Drilling Company (New York), Riverside Theatre (Iowa City), Available Light Theatre (Columbus), the Adirondack Theatre Festival (Glens Falls, NY), Alcyone Festival (Chicago), Theatre Masters (Aspen/West Palm Beach), and the Hatchery Festival (Washington, DC), and developed at the National New Play Network Showcase, the Kennedy Center, the Lark Playwright's Week, Cultural Conversations (Penn State), the

Little Festival of the Unexpected at Portland Stage Company, Central Square Theatre and M.I.T. (Cambridge, MA), Curious Theatre (Denver), Playwrights Theatre of New Jersey, Palm Beach Dramaworks (West Palm Beach, FL), and Performance Network Theatre (Ann Arbor, MI). Prior to moving to the U.S., Jennifer worked in Toronto, Canada, where she toured with her company Red Engine Productions to festivals across the country. Up next: *The Birth Witches* at Cornell College/Riverside Theatre, October 2013.

Kristy Hartsgrove Mooers (Amy)

Kristy is a proud Artistic Associate of WGT, and was seen last year in *Mayberry* and *Rust*. Past shows with Riverside Theatre include *The Exit Interview* (Ensemble), *The Cripple of Innishmaan* (Kate), *The Diary of Anne Frank* (Mrs. Van Daan), *All My Sons* (Sue Bayliss), *Doubt* (Sister James), *Raising Medusa* (Chorus/Medusa), and *Guys on Ice* (Ernie da Mooch). Past roles with Iowa Summer Repertory include Lynne McCarthy in *Red Herring*, Virginia in *The Clean House*, Jean in *Dead Man's Cell Phone*, Becca in *Rabbit Hole* and most recently Mrs. Hudson in *Sherlock's Last Case* and Mrs.



Prentiss in *What the Butler Saw* (and she is looking forward to playing Christine this summer in *The Bad Seed*). Past roles with the Old Creamery Theatre include Jeri Neal in *The Dixie Swim Club*, Mrs. Bratman in *Blithe Spirit*, and Multi-Character Gal in *Leaving Iowa*. Regional credits include the Illinois Shakespeare Festival in Bloomington-Normal (Adriana in *Comedy of Errors* and Maria in *Twelfth Night*), and *Yerma* with the Bohemian Theatre Ensemble in Chicago. She has taught theatre at Coe College, Cornell College, and Illinois State University, and holds an MFA from Illinois State University. Love to MHM.

Saffron Henke (Helen)

As an actress, Saffron has performed in over 60 professional productions, ranging from *Taming of the Shrew* to *Tartuffe* to the one person, 24-character show, *The Syringa Tree*, in regional theatres including the Seattle Children's Theatre, Oregon Shakespeare Festival, Sacramento Theatre Company, Furious Theatre Company, and Riverside Theatre. She is experienced in on-camera work including commercials, industrials, and film, has been profiled in many publications, and is the recipient of the 2005 Princess Grace Foundation Honorarium for Emerging Artists. She received her MFA from the University of Washington's Professional Actor Training Program. As a director, Saffron most recently directed *The Bockeye* at Augustana College. Her directing work has been produced at the Oregon



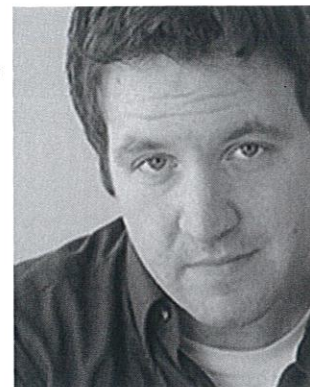
Shakespeare Festival, the Sacramento Theatre Company (STC), the University of Southern California, the Los Angeles Theatre Ensemble, Coe College, Cornell College, St. Ambrose University and Riverside Theatre. She is a proud member of the Actor's Equity Association, and currently works as the Assistant Director for the Grant Wood Art Colony at the University of Iowa.

Shawn Ketchum Johnson (Scenic Design)

Shawn is happy to return to Iowa City where he has designed for Riverside Theatre, Working Group Theatre, and the University of Iowa Playwrights' Workshop on productions including *Mary's Wedding*, *The Syringa Tree*, *Atlas of Mud*, *Triangle*, *The Toymaker's War*, and *The Merchant of Venice*. Recent projects include *Nickel and Dimed* and *Machinal* at Northwestern University, where he is currently an MFA candidate in Stage Design. www.johnsonvisualarts.com

Sean Christopher Lewis (Director/ Sound Design)

Sean is the Artistic Director of Working Group Theatre. With WGT he has created and directed *Mayberry* (Hancher; Iowa West Arts Center; Bucksbaum Performing Arts Center), *Rust* (co-created with Austin Bunn; performed at Legion Arts and Riverside Theatre; published in the *New York Times Magazine*; listed by the *Huffington Post* as "one of the ten important political plays of the last decade"), *Denali* (Actors Theatre of Grand Rapids; Acorn Theatre; Know Theatre of Cincinnati; Acclaim Awards for Best Direction, Best Ensemble), *The Toymaker's War*, *Atlas of Mud*, *Odysseus*, *Iowa* and *Drinks by the Pool*. Outside of Working Group his credits include Jennifer Fawcett's plays *The Birth Witches* (Kennedy Center/National New Play Network Summer Institute) and *goat show* (Adirondack Theatre Festival and Riverside Theatre). The two also collaborated on *We Stood Up*, a community based project in Rwanda bringing the stories of children orphaned by the 1994 genocide to the stage (Centre X Centre International Theatre Festival; KINA Festival of Youth Performance; University of Rwanda). He also co-created *Journey to a Dream*, a community-based project in Tanzania. A noted playwright and solo performer, Sean has had works produced across the United States and Canada at Baltimore Centerstage, Woolly Mammoth, KO Festival of Performance, Interact Theatre, Southern Rep, Cleveland Public Theatre, Salt Lake Acting Company, Uno Festival of Solo Performance, and many more. He's won the Kennedy Center Rosa Parks Award, the National New Play Network Smith Prize, the Barrymore Award, multiple Central Ohio Critic Circle Awards, the Inge Center Fellowship, an NNPN Emerging Playwrights Residency, a National Performance Network Creation Fund Grant, and the NEA Voices in Community Award. He can also be heard from time to time on NPR's "This American Life."



Kathy Maxey (Louise)

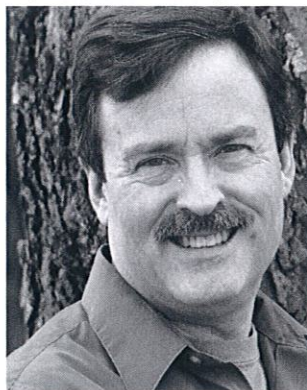
Kathy would like to thank WGT for this wonderful opportunity. She has had the pleasure of performing locally with Iowa City Community Theatre, Dreamwell Theatre, and Combined Efforts Theatre. Favorite roles include Beatrice in *A View from the Bridge*, Myrta Jane in Kate Aspengren's *House of Wonders*, and Beth in Janet Schlapkohl's *Love at the County Fair*. She recently played Kitty Dean in ICCT's production of *The Royal Family*. Kathy would like to thank her friends for their continued support, especially her fiancé, Larry. Grazie mille!

**Christopher Okiishi** (Chuck)

Chris is pleased to be involved with this project. In his daily life, he is a psychiatrist practicing in North Liberty and other communities in Eastern Iowa where he works with individuals and families directly impacted by the issues discussed in this play. He spends most of his free time enjoying theater as a producer, publicist, fund raiser, organizer, director, choreographer, writer, actor, and audience member, the latter at which he is most consistently successful.

**Rip Russell** (Jerry)

A University of Iowa Theatre Arts graduate, Rip has performed locally with Theatre Cedar Rapids, The Classics at Brucemore, SPT Theatre, City Circle Acting Company, Combined Efforts Theatre, Iowa City Community Theatre, University of Iowa Theatres, and over 20 productions with Riverside Theatre. Favorite roles include John Proctor in *The Crucible*, Atticus Finch in *To Kill a Mockingbird*, Juror #8 in *12 Angry Men*, The Duke in *Big River*, and Eddie Carbone in *A View from the Bridge*. Most recently, Rip played Herbert Dean in ICCT's production of *The Royal Family*, and will be seen this May in Fourth Room Theatre's *Cymbeline*. Rip lives in Iowa City with his wife, Janis, and their parrots, Dickens and Buddy.

**Janet Schlapkohl** (Ellen)

Janet received her MFA in Playwriting from the University of Iowa. She also has an MS in Education from the University of Iowa and a BS in Biology with minors in English, Chemistry, and Education from Iowa State University. She is the founder of Combined Efforts Theatre, director of Country Camp, LLC, and the recipient of the Isabelle Turner Human Rights Award, the Richard Maibaum Award, and the Finkbine Award for Human Rights. She is an Adjunct Professor at the University of Iowa. She has been a semi-finalist for the O'Neill, and a Theatre Masters recipient. Her work has been produced in New York City, Los Angeles, Colorado, and across Iowa. She has performed her monologues and one woman shows at Riverside Theatre in Iowa City and at the Looby Theatre in Nashville. She has also worked as a director, a dramaturge, a scenic artist, and a costume designer.

**Courtney Schmitz Watson** (Lighting Design)

Courtney is a freelance designer based in Minneapolis who received her MFA in lighting design from the University of Iowa in 2009. In addition to Working Group Theatre, she

has designed professionally for Lyric Arts Company of Anoka, Dangerous Productions, Black Dirt Theatre, Savage Umbrella, Nimbus Theatre, Rosetown Playhouse, The Phipps Center for the Arts, Riverside Theatre, the University of Iowa Department of Dance, Cornell College, Iowa Summer Rep, Florida Players, and the University of Florida Opera Department. She has also worked as an assistant lighting designer at Asolo Repertory



Theatre and Portland Stage Company. This is her second WGT/Hancher collaboration, having designed the lights for *Mayberry* last year.

Maria Vorhis (Assistant Director)

Maria has spent the past year working with WGT in various roles as an Assistant Director (*Mayberry* and *Rust*), as a storyteller at "Was the Word," as a teacher with the Senior Project at City High School and the Senior Center, and as a hospice volunteer and clown with Iowa City Hospice. She is currently writing a new one-woman show that will premiere in 2013/14. Maria received her BA in Theatre from the University of Iowa, and plans to pursue her graduate degree in Physical Theatre and Clown.

There's a great **jazz station** in your pocket.



↓ **Download**
the KCCK app
for iPhone or
Android and
listen to Iowa's
Jazz Station
right now!

Or listen at
WWW.KCCK.ORG



Member-Supported Public Radio from Kirkwood Community College



Summer of the Arts

join us again for the 2013 season

All Kinds of

Arts, Jazz, Movies, Music & Fun

For All Kinds of People



319.337.7944 | info@summeroftheARTS.org | www.summeroftheARTS.org

WE PUT THE STORY BACK IN “NEWS STORY.”

Maybe knowing the headlines leaves you wanting to know more. Maybe it's time to try IPR News. We take the time to tell the whole story. From every angle. So you know more about the world around you.



IOWA PUBLIC RADIO™

NEWS

90.9 FM | 910 AM



Our heart has always been in the right place.
Now, it's in a new place.



*Introducing University of Iowa Health Care –
Iowa River Landing.*

From pediatrics and women's health to cardiology and routine exams, world-class health care is now available at a new, convenient location in Coralville. Giving you access to medical care designed for you.

uihealthcare.org/IRL | 319-467-2000



UNIVERSITY OF IOWA
HEALTH CARE

IOWA RIVER
LANDING

Hancher Partners are helping us build the future

The Hancher Partners know that Hancher has always been more than a building. Their support provides the building blocks that underpin all of Hancher's world-class programming—in our original facility, during this “uncontainable” period, and in our future home.

We hope you'll join us in thanking these generous supporters who make it possible for us to connect great artists with great audiences.

Thanks to these loyal partners:

Anonymous Donor
Anonymous Family Foundation
Carolyn Brown and Gerald Zimmermann
The Gazette
Hancher Student Alumni
Hancher Guild
Hills Bank and Trust Company
KXIC
The Office of Diversity at Rockwell Collins
Jack and Nona Roe
Scheels
Ben and Dorothy Willie
WMT

To find out how you or your business can become a Hancher Partner, contact:

Chuck Swanson
Executive Director
Hancher
(319) 335-1133 or (800) HANCHER
Email: charles-swanson@uiowa.edu

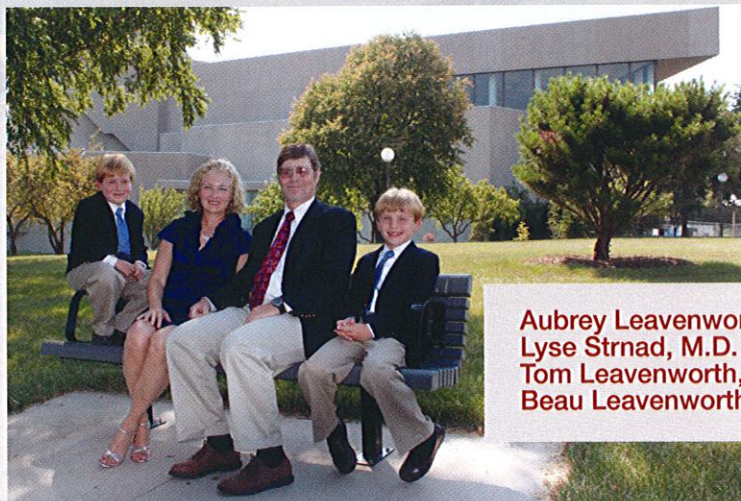
The University of Iowa Foundation
www.uifoundation.org/hancher



[l-r]
Victoria West
Steve West
West Music Company

Charlie Funk
MidwestOne Bank
Judith Hurtig
Richard Hurtig
W. Richard Summerwill
Joyce Summerwill

[l-r back row]
Pat Heiden
Oaknoll Retirement Residence
George Grilley
Barbara Grilley
Gary A. Wicklund
LaDonna K. Wicklund
[l-r front row]
Laurie L. Fajardo
Jill H. Morris, M.D.
Frank H. Morris, Jr., M.D.
Pat Gauron



Aubrey Leavenworth
Lyse Strnad, M.D.
Tom Leavenworth, M.D.
Beau Leavenworth



[l-r]
 Sue Strauss
 John Strauss
 Rhoda Vernon
 Gretchen Snider
 Frank Snider
 Betsy Fahr
 Julie Schweser
 Carl Schweser



[l-r]
 John F. Holmes
 Ruthann Holmes
 Pamela Willard
 Derek Willard
 Mary Jo Stanley
 Richard Stanley



[l-r]
 Kevin Monson
 Tim Schroeder
 Dwight Dobberstein
 Kim McDonald
 Neumann Monson Architects

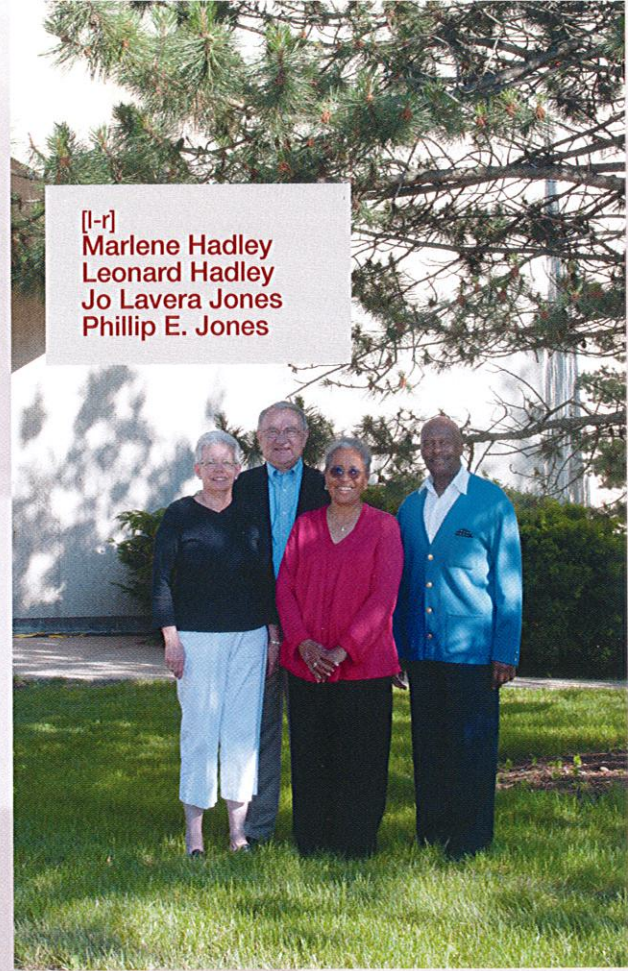
Deborah Bullion
 Ian Bullion
 Heartland Inn Iowa City/Coralville

Andrea Birt
 Judy Schultz
 Kristin Schultz
 Ralph Schultz Family Foundation

[l-r]
 Jean Hood
 Albert Hood
 Michael McNulty
 Darlene McNulty
 John Menninger
 Gabriel Aguirre
 Press-Citizen Media
 Patricia Kruse
 Iowa House Hotel
 William Stanford
 Marlene W. Stanford



[l-r]
 Marlene Hadley
 Leonard Hadley
 Jo Lavera Jones
 Phillip E. Jones



[l-r]
 Reid McDonald
 McDonald Optical
 Mary K. Calkin
 Jon Whitmore
 ACT, Inc.
 George Eichacker
 Lois Eichacker
 Mary Ann Peters
 Chuck Peters
 Nora Lee Balmer
 Wayne Balmer
 Nancy J. Granner
 Daryl K. Granner
 Linda Paul
 Douglas Paul



[l-r]
 Kay Adams
 Kevin Adams
 Clark Adams
 Cambridge Place Apartments

Maile Sagen
 Michael W. O'Hara
 Jane Engeldinger





[l-r]
 William B. and Gwendolyn Hood
 Betty Winokur
 William H. and Bertha S. Olin
 Steve and Janie Schomberg
 Robert A. Oppliger



[l-r]
 Peter and Ellie Densen
 Sherwood and Sara Wolfson
 Jo Catalano



[l-r]
 Jennifer Zoller
 Cumulus Media
 Rex Montgomery
 Daniel Stence and Beth Holden Stence

[l-r]
 Bruce Walker
 Thomas Gelman
 Richard Tucker
 Phelan, Tucker, Mullen, Walker,
 Tucker & Gelman, L.L.P.



[l-r]
 Ralph H. Congdon
 Marcia A. Congdon
 Barbara S. Clark
 Charles Richard Clark
 Robert L. Tree



[l-r]
 Dean Moore
 Alyssa Moore
 Geoff Wilming
 Quality Care Storage

Robert N. Downer
 Douglas D. Ruppert
 Timothy J. Krumm
 Meardon, Sueppel & Downer, P.L.C.

Richard Templeton
 Vicki Lensing
 Michael Lensing
 Lensing Funeral & Cremation Services



Steven K. Knierim
Brad A. Brown
Daniel J. Thies
Susan R. Bowersox
OPN Architects, Inc.

Mitchell A. Hirsch
Gina Narracci
Pelli Clarke Pelli Associates

Emily Eisenmenger
Daniel C. Mehls
M.A. Mortenson Company



[l-r]
Sue M. Galvin
Mark Ginsberg
M.C. Ginsberg "Objects of Art"
Johanna Abernathy
Robert Boyd
Anne Hargrave
Alicia Brown-Matthes
Richard Burton
Ann Burton
William Matthes
Tammy Tronvold
Kim Swanson
Erica Reimers
Garry R. Hamdorf
Susann K. Hamdorf
Chad Reimers
Chuck Swanson
Judith Boyd
Jeffrey Tronvold
Terry Abernathy
Vickie Ginsberg
M.C. Ginsberg "Objects of Art"



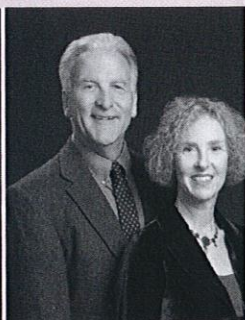
[l-r]
Von Stange
University Catering
Jo Ellen Ross
Alan Swanson
Peggy Scholz
Liz Swanson
Herb and Janice Wilson



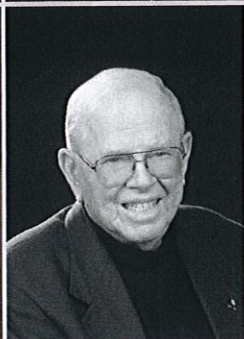
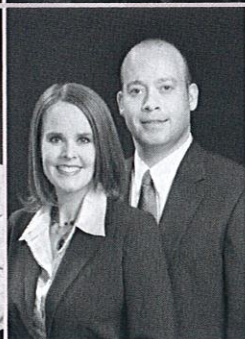
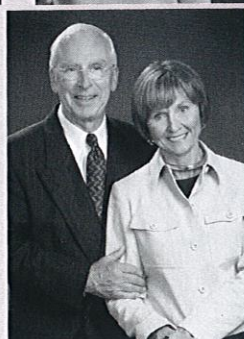
[l-r]
Jim Dreusicke
 Toyota/Scion of Iowa City
Patrick Beaver
 Sheraton Iowa City Hotel
Dan Franz
 Riverside Casino & Golf Resort
Jeff Peller
 Coralville Marriott Hotel
Melanie Baker
 Sheraton Iowa City Hotel
Jeff Disterhoft
 University of Iowa Community Credit Union
Jana Cohen
Mark Dreusicke
 Toyota/Scion of Iowa City
Jordan Cohen
Don Heineking



[l-r]
Jenny Calsyn
 RDA Financial Network, Inc
David Darner
 RDA Financial Network, Inc
John Arthur
 RDA Financial Network, Inc
Susan Mims
 RDA Financial Network, Inc
Christopher Arthur
 RDA Financial Network, Inc



[l-r] TOP
Roger and Gayle Klouda
Loanna and Orville Bloethe
 HLV Community School Fund
John and Coralee Dey
 Everybody's Whole Foods
Tom Hayden
 Shive-Hattery Architecture + Engineering
Bryan and Shelly Herzic
 Orchard Green Restaurant & Lounge



[l-r] BOTTOM
John and Ellen Buchanan
John and Aspen Lohman
Rudy Schulz
Tom Ray and Kathy Sharp



20-Year Recipient of Toyota's
President's Award
for Excellence in Customer Satisfaction



TOYOTA-SCION OF IOWA CITY

www.ToyotaofIowaCity.com



**"Best New & Used Car
Dealer in the Area"**

- As voted by Iowa City Press-Citizen Readers

"In addition to the work I do
with my music therapy clients,
I have really become

PASSIONATE ABOUT SONGWRITING

over the past several years.

Songwriting has truly been
my own form of therapy
while trying to make sense of events
in my own life, as well as
the experiences of others around me."

ERIN EBNET

MUSIC THERAPIST

Westmusic

Experience the power of making music.

West Music Coralville | 1212 Fifth Street | 800-373-2000 | westmusic.com
PIANOS • GUITARS • DRUMS • BAND • ORCHESTRA • LESSONS • REPAIR • MUSIC THERAPY

NATIVE KIDS RIDE BIKES

March 2–July 28, 2013
Black Box Theater, IMU
Always free and open to the public.

UI Exhibition sponsors are
Ruth Ann W. & John L. Bentler,
Nancy J. Richardson & Charles J. Krogmeier,
Joyce P. & W. Richard Summerwill

Photo by Dylan Miner

University of Iowa
Museum of Art **im**
uima.uiowa.edu

A close-up, artistic photograph of a woman's face, focusing on her eyes and cheek. She has dramatic eye makeup with dark, winged eyeliner and vibrant purple eyeshadow. Her eyes are a striking blue. She is wearing a large, ornate earring that features a cluster of four circular, diamond-encrusted pendants hanging from a chain. Her hair is dark and styled with long, thin, iridescent feathers that have green, blue, and purple hues. The background is dark and out of focus.

SOFER
JEWELRY

**&HERTEEN
STOCKER**

101 S. DUBUQUE STREET • IOWA CITY, IA 52240
319.338.4212

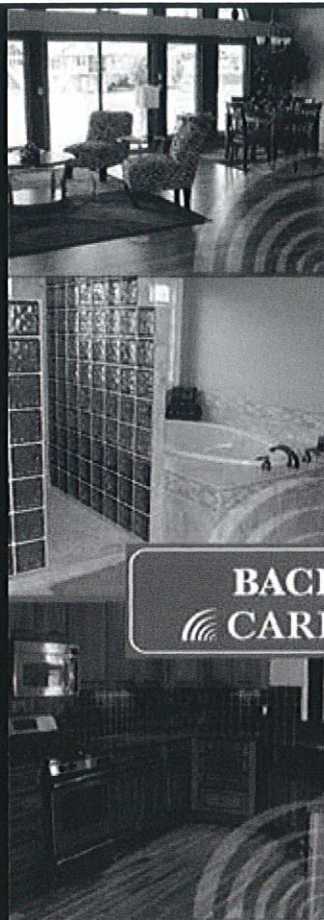
JODIE J.

FREDERICKS
REALTOR®



Designed to Get You Home
Residential Real Estate,
Home Staging and Design
Certified Home Marketing Specialist

319-331-2320
www.jodiej.com



INNOVATION

EXPERTISE

COMMITMENT

• carpet • hardwoods • tile • vinyl
• laminates • window coverings
• interior design • professional installation

BACHMEIER
CARPET ONE FLOOR & HOME

3402 Merchant St., Coralville
319-545-5678

(1 mile West of Coralridge Mall on Hwy 6)
www.bachmeierinteriors.com

Reck Violin Shop

DEALERS
AND RESTORERS
OF FINE
STRING
INSTRUMENTS

CLOCK TOWER PLAZA
1801 2ND ST., SUITE 130
CORALVILLE
319/351-8374

www.reckviolin.com



Your sight Our vision

For over 90 years, Wolfe Eye Clinic has looked to the future in an effort to provide Iowans with the latest eye-care advancements. By staffing our clinics with highly skilled specialists and investing in new technologies, Wolfe has been the name Iowans turn to first for state-of-the-art medical and surgical eye care. After all, improving your sight has always been our vision.

*To find out how Wolfe Eye Clinic can
help you get a better focus on the arts,
call 800-542-7956 or visit
www.wolfeeyec clinic.com.*



From the Left:
Todd W. Gothard, MD
Cataract and Refractive Surgery
LeAnn J. Larson, MD
Cataracts and Glaucoma
Charles H. Barnes, MD
Medical and Surgical Retina
Benjamin L. Mason, MD
Glaucoma and Cataracts

TCR
WWW.THEATRECR.ORG
THEATRE CEDAR RAPIDS

theatre cedar rapids

MOVIES

Back in Downtown Cedar Rapids!
Outstanding Plays, Musicals, Original Scripts, and
once again, MOVIES back in the
Historic Iowa Theater Building.

For titles, showtimes, and more, visit
www.theatreocr.org



discerning eye



Eyewear for
men & women



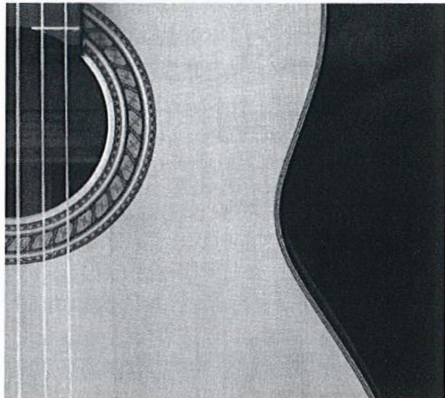
Cool frames.
Hi-tech lenses.
See well.
Look great.



119 E Washington St
Iowa City, IA 52240
(319) 338-6800

www.SeeWellLookGreat.com

**Proud
Supporters
of the Arts**



**UNIVERSITY OF IOWA
COMMUNITY
CREDIT UNION**

339-1000 • uiccu.org



Lyse S. Strnad, M.D.

John F. Stamler, M.D., PhD.

Stacy L. Thompson, M.D.

Chris E. Watts, M.D.

Providing quality medical and surgical eye care to the Iowa City area since 1954.

**Cataracts – Macular Degeneration – Glaucoma
Diabetic Retinopathy – Eye Lid Surgery and
Medical and Routine Eye Exams**



2629 Northgate Drive – Iowa City

319-338-3623 / 800-338-3623

www.iowacityeye.com

Preucil School of Music

Suzuki Instruction:

Violin, Viola, Cello,
Bass, Flute, Harp,
Piano & Voice

Music Together®
Family Classes

Preschool:

2, 3 & 5 Day Sessions
Orff-Schulwerk
Music Classes



Main Campus (319) 337-4156

North Campus & Morris Early Childhood Education Center
(319) 248-1248 • www.preucil.org

**CAREER PREPARATION/LIFE ENHANCEMENT
INTERNATIONALLY KNOWN FOR EXCELLENCE**



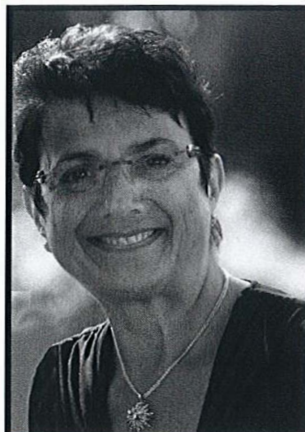
kcrg.com

**YOUR 24 HOUR
NEWS
SOURCE**

**invitations • announcements
stationery • greeting cards • gifts**



140 north linn street • iowa city
P. 319-337-4400 • www.rsvp-asap.com



RITA T. MARCUS

Realtor®, Licensed to Sell Real Estate in the State of Iowa since 1986

**Professionalism... Integrity... Ethics
My Way of Life... My Promise**

319.594.5600—cell
319.354.9440—office
www.ritamarcus.com

**BLANK &
McCUNE The
Real Estate
Company**

Blank & McCune, The Real Estate Company
506 East College Street • Iowa City, Iowa 52240
319.354.9440

Where Innovative Ideas Are Always in Bloom



520 Highway 1 W • Iowa City • 337-8351
www.iowacitylandscaping.com

Nursery | Landscape Design | Gifts | Workshops

Proud supporter of the performing arts!

Hills Bank and Trust Company

1-800-HILLSBK • hillsbank.com • Member FDIC

RIVERSIDE THEATRE



BLACKBIRD

by David Harrower

Directed by Margaret Eginton

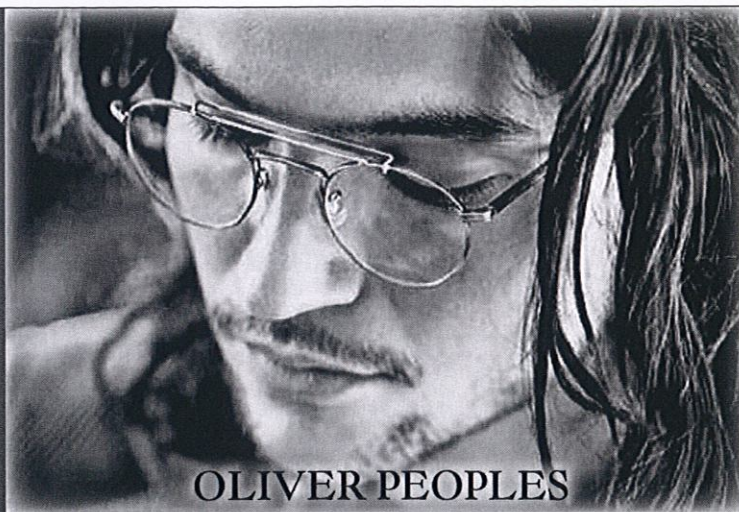
April 5—21

Can one conversation heal the past?

Una, now 29 years old, finds Ray 15 years after their illicit relationship ready to discuss what existed between them and to attempt to answer years of questions. Ray, now out of prison with a new name and new life discovers that he, despite his guilt, must also heal to become a better person.

For mature audiences only.

(319) 338-7672 riversidetheatre.org
213 N Gilbert Street, Iowa City



OLIVER PEOPLES

BEST of the AREA

McDonald
OPTICAL

Since

1956

Eyewear As Individual As You.

Downtown
319.337.4995
16 S. Clinton

Sycamore
319.337.3737
1614 Sycamore St.

Coralville
319.337.4769
Corridor Way

www.mcdonaldoptical.com

IOWA BOOK

Visit the store at

8 South Clinton St.

Monday-Friday: 9am to 8pm

Saturdays: 10am to 6pm

Sundays: 12pm to 5pm

find us online at
www.IowaBook.com

like us on facebook
[www.facebook.com](http://www.facebook.com/IowaBook)
/IowaBook



Carpentry by Chris LLC

Remodeling Design-Build Services

We Manage the Whole Project



331-3603



www.CarpentrybyChris.com

Referrals in the Iowa City Area

The University of Iowa's Hancher, College of Engineering, Center for Global and Regional Environmental Research, Iowa Flood Center, College of Education, iExploreSTEM, and State Hygienic Laboratory Present

LIVING WITH FLOODS

Featuring free outdoor performances
by the Preservation Hall Jazz Band



Des Moines - June 7, 7:30 pm, Simon Estes Riverfront Amphitheater

Council Bluffs - June 8, 7:00 pm, River's Edge Park

Muscatine - June 11, 7:00 pm, Riverfront Park

Cedar Rapids - June 13, 7:00 pm, Brucemore Greenhouse Lawn

Davenport - June 14, 6:30 pm, LeClaire Park Bandshell

Iowa City - June 15, 4:00 pm, Pentacrest

Dubuque - June 16, 3:00 pm, McGraw Hill Parking Lot

The Living with Floods project includes a wide variety of related events.

For more information, visit www.hancher.uiowa.edu and www.lihr.uiowa.edu/livingwithfloods.

This project is supported by

University of Iowa, the UI College of Engineering, Hancher, and Back to the River.

Additional support has been provided, in part, by the Iowa Arts Council and the National Endowment for the Arts.

BUYING THE
RIGHT HOME
IS AN ART



TIME FOR SOMETHING OUT OF THE ORDINARY? Listening, inspiring, creating lifestyle changes and bringing results, we specialize in distinctive homes and condominiums. We help homeowners find the homes of their dreams. We look forward to helping you find residential real estate solutions.

I want to help you maximize your home possibilities, and I am experienced in imagining the practical and aesthetic potential of homes you consider purchasing. I'm excited to have on my A-TEAM sophisticated Realtors Adam Pretorius and Tim Conroy. You can trust us to serve you with community and networking savvy, creativity, and just plain hard work. We'll be productive together.

We listen to you.

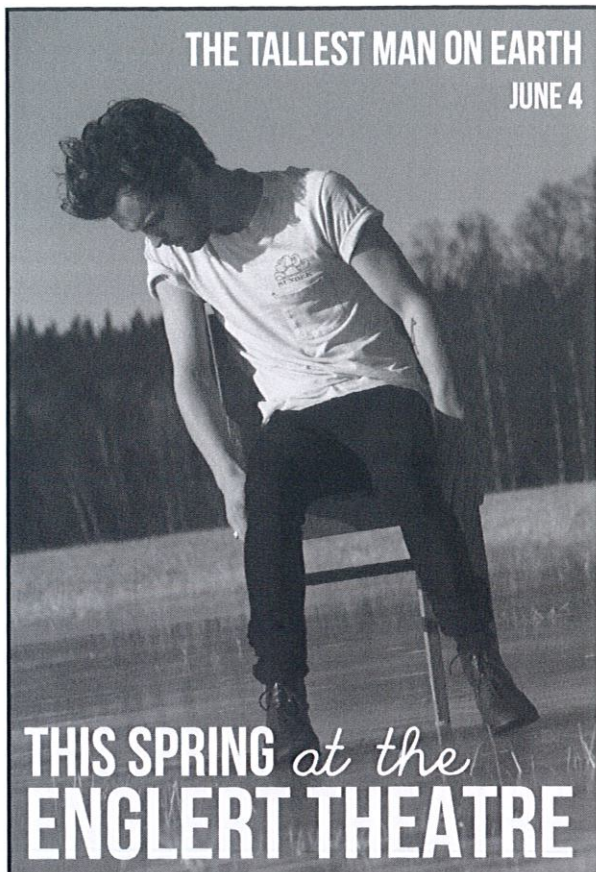


CLASSIC.

Alan Swanson

ALAN SWANSON 319.321.3129
BLANK & McCUNE The Real Estate Company

The A-TEAM is licensed to sell real estate in the state of Iowa.
BLANK & McCUNE The Real Estate Co. | 506 E College Iowa City



THE TALLEST MAN ON EARTH
JUNE 4

THIS SPRING *at the* ENGLERT THEATRE

April

- 15 Billy Bragg
- 17 California & Montreal Guitar Trios
- 19 Eileen Ivers & Immigrant Soul
- 26 Sandy Dyas: Closing Reception & Art Sale

May

- 8 Zoe Keating
- 10 Manet: Portraying Life Exhibition Series
- 11 Greg Brown Record Release Show
- 23 Yo La Tengo
- 31 Calexico

June

- 2 They Might Be Giants
- 3 Son Volt
- 4 The Tallest Man On Earth

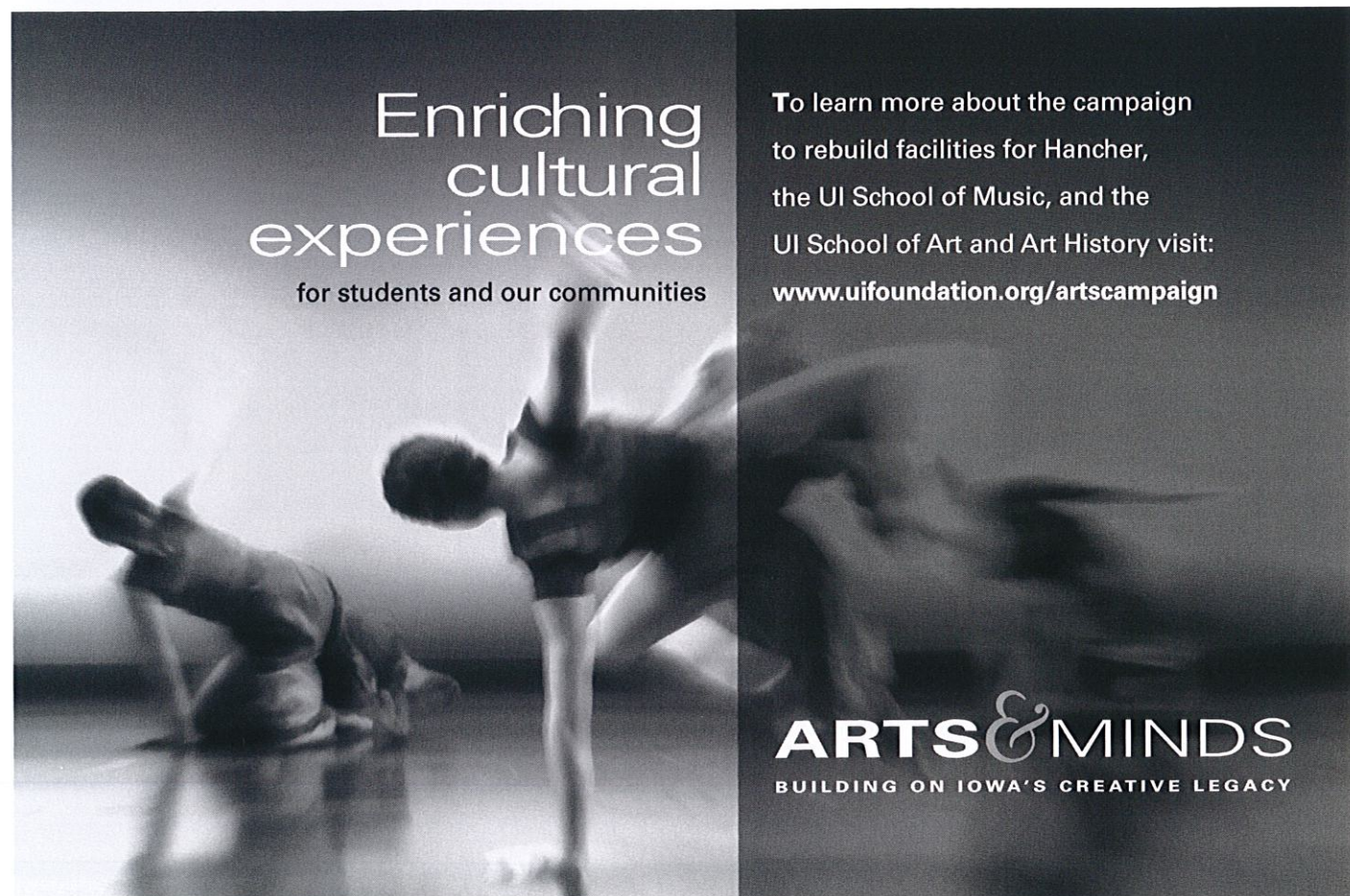
July

- 10 Arlo Guthrie
- 14 Dawes with Shovel & Ropes
- 19 Mavis Staples
- 27 Don McLean
- 30 John Hiatt & The Combo

221 E. Washington St., Downtown Iowa City

englert.org

(319) 688-2653



**Enriching
cultural
experiences**
for students and our communities

To learn more about the campaign
to rebuild facilities for Hancher,
the UI School of Music, and the
UI School of Art and Art History visit:
www.uifoundation.org/artscampaign

ARTS & MINDS
BUILDING ON IOWA'S CREATIVE LEGACY

Wearing our art on our sleeves— The Java House and Hancher

JAVA HOUSE BREWING LOCATIONS

211 ½ E. WASHINGTON STREET

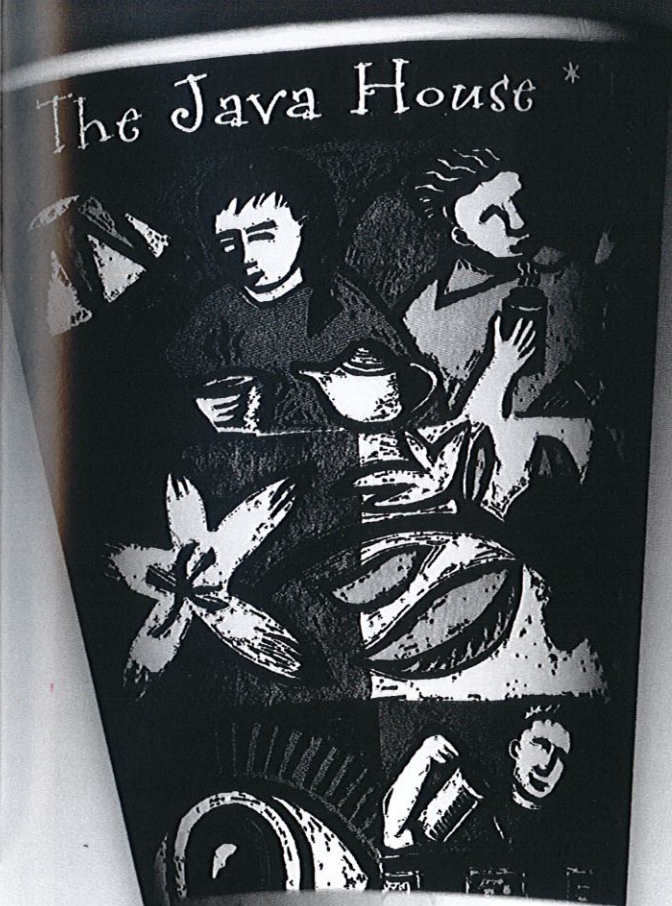
1575 S. FIRST AVENUE

713 MORMONTREK BLVD

UIHC - CARVER PAVILION

UIHC - GENERAL HOSPITAL

UIHC - POMERANTZ WEST





Upcoming Events Include:

The Corridor Sings Broadway:
A Benefit for CCPA & CCACC
 Apr 19-20

The Kandinsky Suite & Mural
composed by Dan Knight
 Apr 21

Dr. Zubo & the Bird Purples
Music Composed for the CCPA
 Apr 26

Iowa Dance 2013:
Dancing Our Visions
 Apr 27

Iowa City Girls Choir:
Spring Concert
 Apr 29

City Circle Presents:
**A Funny Thing Happened on
 the Way to the Forum**
 May 10-19

Space available for:
Performances
Fundraisers
Lectures
Business meetings
Presentations
Receptions

www.coralvillearts.org
319.248.9370



ORCHESTRA IOWA 2012-2013 SEASON

TIMOTHY HANKEWICH - MUSIC DIRECTOR

BRUCEMORCHESTRA

Sunday, September 9, 2012
 On the lawn at Brucemore, Cedar Rapids

HOMECOMING

Saturday, November 10, 2012 – Paramount Theatre
 Sunday, November 11, 2012 – Iowa Memorial Union

THE NUTCRACKER

Featuring Ballet Quad Cities
 Saturday, December 1 & Sunday, December 2, 2012
 Paramount Theatre

HOLIDAY SPECTACULAR

Saturday, December 15 & Sunday, December 16, 2012
 Paramount Theatre

LA BOHÈME

Presented by The Cedar Rapids Opera Theatre
 Friday, January 18 & Sunday, January 20, 2013 – Paramount Theatre

STAR-CROSSED LOVERS

Saturday, February 9, 2013 – Paramount Theatre
 Sunday, February 10, 2013 – West High School

BRAHMS' THIRD

Saturday, March 9, 2013 – Paramount Theatre
 Sunday, March 10, 2013 – West High School

CINDERELLA

Featuring Ballet Quad Cities
 Saturday, April 13 & Sunday, April 14, 2013 – Paramount Theatre

AMERICAN GOTHIC

Saturday, May 4, 2013 – Paramount Theatre
 Sunday, May 5, 2013 – West High School

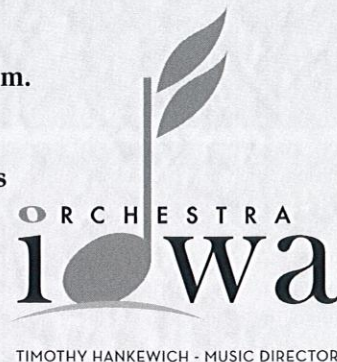
Chamber Series

Chamber I	September 21-23, 2012
Chamber II	October 12-14, 2012
Chamber III	January 11-13, 2013
Chamber IV	April 5-7, 2013

Friday & Saturday performances, 7:30 p.m.
 Opus Concert Café, Cedar Rapids

Sunday performances, 2:30 p.m.
 Coralville Center for the Performing Arts

For tickets & additional information:
 319.366.8203 or
 800.369.TUNE (8863)
www.orchestraiowa.org



Healthy & Active



Patricia Heiden
Executive Director
MA, Health Services Administration
Licensed Nursing Home Administrator

Keeping you healthy and active in your retirement years is our goal. Come share in our vibrant community and leave behind all those extra cares and responsibilities of home ownership so you can enjoy the more important things in life.

Come experience the difference...the LifeCare difference

Call me today for your
personal tour

319-351-1720

An active LifeCare community since 1966

Oaknoll



<http://www.facebook.com/Oaknoll>

1 Oaknoll Court • Iowa City, IA 52246 • www.oaknoll.com • oaknoll@oaknoll.com



You never actually own a Patek Philippe.
You merely take care of it for the next generation.



PATEK PHILIPPE
GENEVE

Begin your own tradition.

m.c. ginsberg

JEWELRY AND OBJECTS OF ART

110 East Washington Street • Iowa City
319-351-1700

IN THE HEART OF THE OLD CAPITOL CULTURAL DISTRICT



Annual Calendar Chronograph Ref. 5960P