

MAYA BEISER

THE DAY

Thursday, October 27, 2016, 7:30 pm



 HANCHER AUDITORIUM
OPENING SEASON 2016/2017

Great Artists. Great Audiences.
Hancher Performances.



WILLIAM G. NUSSER, JR.

Charles Swanson and staff
Hancher Auditorium
1 East Park Road
Iowa City, IA 52242

Dear Chuck and the Hancher Staff,

Congratulations on the opening of the new, Cesar Pelli-designed Hancher Auditorium. It is truly a spectacular design and quite clearly a labor of love. Enclosed is our ad for the inside front cover of your program. Lazare Diamonds and Hands Jewelers are proud to be a part of your new building, your new season and your glorious future. We wish you and your staff many years of companies with a premier venue and the experiences of their lives.

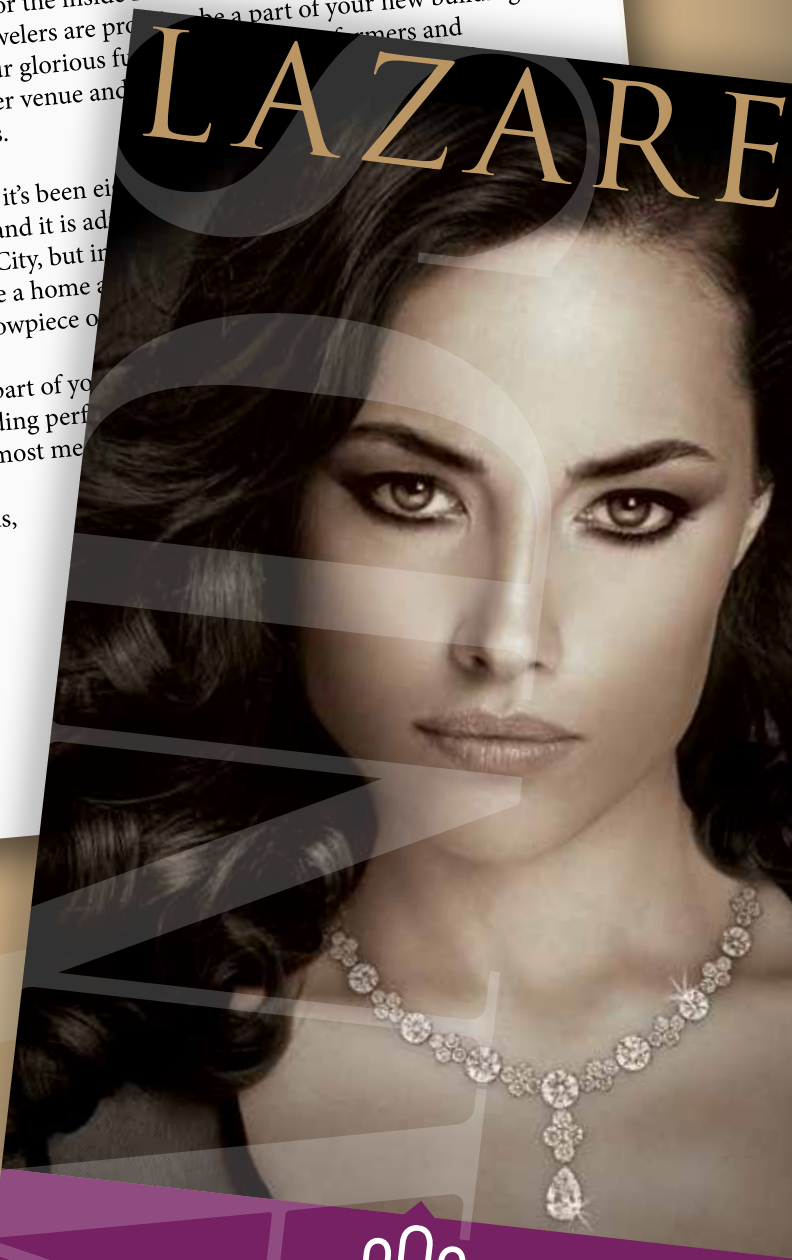
It is hard to believe that it's been eight years since the Hancher performing arts venue and it is still alive, not only in Iowa City, but in the state! And now we have a home for a brilliantly designed showpiece of architecture.

We are proud to be a part of your brilliant future, providing performance and Iowans with the most memorable experiences.

With warmest regards,

Bill

LAZARE



Iowa's Oldest Jewelry Store

HANDS
JEWELERS

SINCE 1854

109 EAST WASHINGTON STREET • DOWNTOWN IOWA CITY

319-351-0333 • 800-728-2888

WWW.HANDSJEWELERS.COM

FACEBOOK.COM/HANDS JEWELERS

@HANDSJEWELERS

the day & world to come

MAYA BEISER & DAVID LANG

Performed by MAYA BEISER

Written and Composed by DAVID LANG

Video (*the day*) and Lighting Design by JIM FINDLAY

Sound Design by DAVID COOK

Spoken Text by KATE VALK

Video images for *world to come* by IRIT BATSRY

world to come was commissioned for Maya Beiser by Commissioning Music/USA, The Carnegie Hall Corporation, The John F. Kennedy Center for the Performing Arts, The Krannert Center for the Performing Arts, University of Illinois at Urbana-Champaign, UC Santa Cruz Arts & Lectures, On the Boards, and Connecticut College.

the day was commissioned by the University of Iowa / Hancher Auditorium.

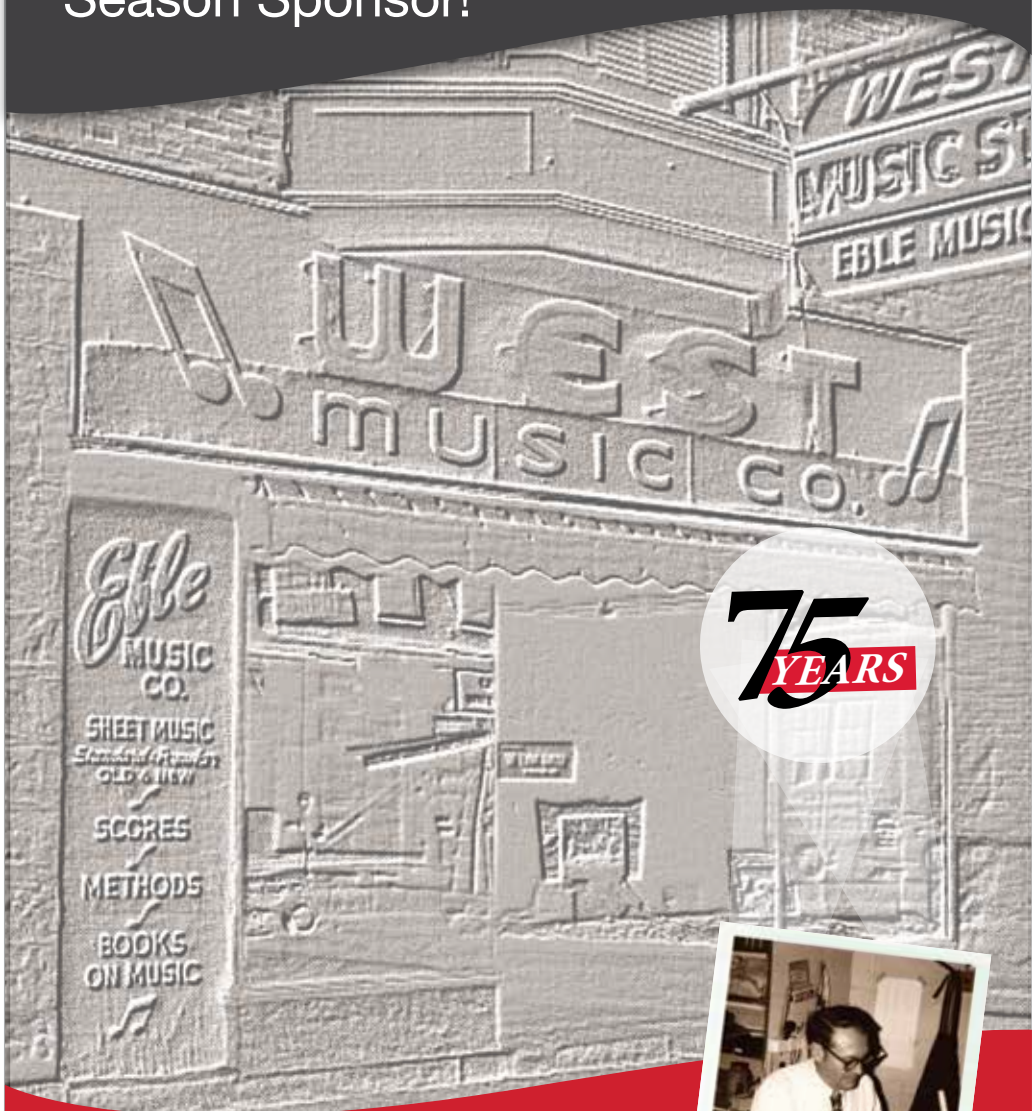


EVENT SPONSORS
LEE AND KAZI ALWARD

SEASON SPONSOR
WEST MUSIC



PROUD to be Hancher's 2016-2017
Season Sponsor!



Founder Pearl West

West Music is a third generation locally owned and family operated business. For 75 years, West Music has been the area's leading partner in music education. We are your trusted resource — helping you play now and play for life.



WESTmusic

Play now. Play for life.

westmusic.com

CEDAR FALLS • CEDAR RAPIDS • CORALVILLE • DECORAH
DES MOINES PIANO GALLERY • DUBUQUE • QUAD CITIES

HOW LONG IS A DAY?

From Genesis to the Riddle of the Sphinx to the present time, a day has meant something more to us than the distance between sunrise and sunset. Because most of us rise in the morning and lie down in the evening, the day is a convenient metaphor for all the days of our lives. The totality of the day includes both the light—shining on what we can see and know and feel—and the dark—hiding from us what we can't see, can't know, can't feel. This work centers on what happens in the dark, and after.

The text for *the day* is crowdsourced from the internet, searching the ways that ordinary people spend their days, as they rise, as they live, and as they fall. The text is arranged almost like a prism, with many conflicting facets of each action described and recounted from different vantage points, as we proceed from wakefulness to sleep.

In *world to come*, Maya and her voice become separated from each other, and they struggle to reunite in a post-apocalyptic spiritual environment. *world to come* is a kind of prayer—introspective and highly personal. It is a meditation on hope and hopelessness, asking fundamental questions about the death and life of the soul.

The projection environment Batsry created for *world to come* is a world in transformation, in the process of becoming. Composed of images of water, this “creation scene” evokes water as a dominant element in creation myths.

DAVID LANG WRITES:

the day was written for my friend and longtime collaborator Maya Beiser, as a kind of introduction to my previous piece for her, *world to come*.

world to come imagines the journey of the soul when it is separated from the body in death, as they struggle to find each other again. For *the day* I wanted to start earlier in the journey, exploring the ways we might review our lives, as they are running away from us. I wondered what I might discover if I cataloged the moments in our lives that we remember best, that seem like highlights in our memory of them. I wanted the act of remembering to be as widespread as possible, so I imagined asking 300 very different people the question “What was the most important day in your life?” Every phrase that answers this I treated as a personal statement from someone, somewhere, about a moment that was so significant it felt worth holding onto. I hoped that assembling them together, into a single narrative, would help us feel the weight of a life, as it is being lived.

IRIT BATSRY WRITES:

Maya, playing inside this video environment in flux, appears at the same time to be surrounded by it and to generate it with the sounds of her cello.

Water here is raw matter, a physical element and a metaphor. Like water, video signal is a flow. It carries, it changes. It can't be grasped. Like memory.

You can't bathe in the same river twice.

You can't see an image nor hear a sound twice,
not in the same way.

ABOUT MAYA BEISER

Cellist Maya Beiser defies categories. Passionately forging a career path through uncharted territories, she has captivated audiences worldwide with her virtuosity, eclectic repertoire, and relentless quest to redefine her instrument's boundaries. *The Boston Globe* declares, "With virtuoso chops, rock-star charisma, and an appetite for pushing her instrument to the edge of avant-garde adventurousness, Maya Beiser is the post-modern diva of the cello," while *Rolling Stone* calls her a "cello rock star."

Raised in the Galilee Mountains in Israel, surrounded by the music and rituals of Jews, Muslims, and Christians, while studying classical cello repertoire, Maya has dedicated her work to reinventing solo cello performance in the mainstream classical arena. A featured performer on the world's most prestigious stages including Lincoln Center, Carnegie Hall, Kennedy Center, London's South Bank Centre, Sydney Opera House, Beijing Festival, Big Ears festival, and the Barbican's Sound Unbound, she has collaborated with a wide range of artists across many disciplines, including Brian Eno, Philip Glass, Shirin Neshat, Steve Reich, David Lang, Tan Dun, Robert Woodruff, Bill Morrison, Evan Ziporyn, and Osvaldo Golijov, among many others.

Maya's critically acclaimed multimedia productions *world to come*, *Almost Human*, *Provenance*, *Elsewhere: A Cello Opera*, and *All Vows* have consistently been chosen for top critics' "Best Of The Year" lists. *All Vows* premiered at the Yerba Buena Center for the Arts in 2014 and has since been on tour in the U.S. including performances in Washington, DC; Dallas; Houston; Chicago; and New York. Other recent and upcoming highlights include featured solo performances as part of the Barbican's Sound Unbound festival in London; two new cello concerti premieres, Mohammed Fairouz's cello concerto with the Detroit Symphony and Mark Anthony Turnage's cello concerto with the Swedish Chamber Orchestra; as well as two multimedia solo production collaborations with David Lang and Julia Wolfe.

Highlights of Maya's tours include performances at the Ravinia Festival in Chicago, Celebrity Series in Boston, Ojai Music Festival, International Festival of Arts and Ideas in New Haven, and major venues and festivals in Barcelona, Paris, Amsterdam, Torino, Tokyo, Taipei, Athens, Mexico City, and Bogota. She has appeared with many of the world's top orchestras performing new works for the cello including the St. Paul Chamber Orchestra, Montreal Symphony, BBC Concert Orchestra, Boston Pops, Sydney Symphony, Seattle Symphony, Nashville Symphony, China Philharmonic, and Shanghai Philharmonic, among many others.

Maya's vast discography includes ten solo albums and many studio recordings and film music collaborations. Her latest album, *TranceClassical*, released July 2016, debuted at No. 1 on the Apple Music classical chart. Her 2010 album *Provenance* topped the classical and world music charts on both Amazon and iTunes, and her album *Time Loops* was selected among NPR's top 10 recordings of 2012. Her album *Uncovered*, a collection of re-imagined and re-contextualized classic rock masterpieces, made the top 10 on the Billboard Classical Chart.

Maya Beiser is a 2015 United States Artists (USA) Distinguished Fellow in Music and a 2017 Mellon Distinguished Visiting Artist at MIT Center for Art, Science & Technology. Invited to present at the prestigious TED main stage in Long Beach, CA, Maya's 2011 TEDtalk has been watched by close to one-million people and translated to 32 languages. In 2013, she was a

featured guest alongside such luminaries as Yoko Ono, Marina Abramović, and Isabella Rossellini at ICASTICA, a festival celebrating women working in artistic fields in Arezzo, Italy. Maya is a graduate of Yale University and was a founding member of the Bang on a Can All-Stars. For more information, visit www.mayabeiser.com.

ABOUT DAVID LANG

“With his winning of the Pulitzer Prize for *the little match girl passion* (one of the most original and moving scores of recent years), Lang, once a postminimalist enfant terrible, has solidified his standing as an American master.” – *The New Yorker*

David Lang is one of the most highly esteemed and performed American composers writing today. His works have been performed around the world in most of the great concert halls.

Lang’s *simple song #3*, written as part of his score for Paolo Sorrentino’s acclaimed film *Youth*, received many awards nominations in 2016, including the Academy Award and Golden Globe.

His *the little match girl passion* won the 2008 Pulitzer Prize in music. Based on a fable by Hans Christian Andersen and Lang’s own rewriting of the libretto to Bach’s *St. Matthew’s Passion*, the recording of the piece was awarded a 2010 Grammy Award for Best Small Ensemble Performance. Lang has also been the recipient of the Rome Prize, Le Chevalier des Arts et des Lettres, and Musical America’s 2013 Composer of the Year.

Lang’s tenure as 2013-14 Debs Chair Composer’s Chair at Carnegie Hall saw his critically acclaimed festival, *collected stories*, showcase different modes of storytelling in music. This season Lang sees the premiere of his chamber opera *Anatomy Theatre* at LA Opera, the 4th annual performance of *the little match girl passion* to the Metropolitan Museum of Art, the U.K. premieres of *the national anthems* with the London Symphony and *mystery sonatas* at Wigmore Hall, as well as residencies at the Strings of Autumn Festival in Prague, the Winnipeg New Music Festival, and Baldwin-Wallace College.

Lang’s music is used regularly for ballet and modern dance around the world by such choreographers as Twyla Tharp, Susan Marshall, Édouard Lock, and Benjamin Millepied, who choreographed a new piece by Lang for the LA Dance Project at BAM in 2014. Lang’s film work includes the score for Jonathan Parker’s (*Untitled*), the music for the award-winning documentary *The Woodmans*, and the string arrangements for *Requiem for a Dream*, performed by the Kronos Quartet. His music is also on the soundtrack for Paolo Sorrentino’s Oscar-winning *La Grande Bellezza* and his 2015 film *Youth*. In addition to his work as a composer, Lang is Professor of Composition at the Yale School of Music.

David Lang is co-founder and co-artistic director of New York’s legendary music collective Bang on a Can. His music is published by Red Poppy Music (ASCAP) and is distributed worldwide by G. Schirmer, Inc. For more information, visit davidlangmusic.com.

CLAY

REVISITED

TRADITIONS IN SHARDS



Betty Woodman (American, 1930–), *Pillow Pitcher*, 1980, Porcelain, 22 x 20 1/2 x 18 in.
Gift of Joan E. Mannheimer, 1991.223. ©Betty Woodman

OCTOBER 8–DECEMBER 11, 2016
Black Box Theater, Iowa Memorial Union

Funding for this exhibition was provided by
the Gerald Eskin Ceramics Art Initiative



THE UNIVERSITY OF
IOWA
MUSEUM OF ART

CONGRATULATIONS TO THE TEAM THAT BRINGS HANCHER AUDITORIUM-

THE ARCHITECTS,
BUILDERS, ACOUSTICIANS,
LIGHTING DESIGNERS, STAFF,
AUDIENCES & PERFORMERS,
WHO HAVE CREATED AND
WILL CREATE ART IN THE
MASTERPIECE THAT IS
HANCHER. WE, TOO, BELIEVE
IN TEAMWORK AND
TOGETHER WORK CREATIVELY
TO ENHANCE THE ART
OF REAL ESTATE, BUILD
RELATIONSHIPS, PRODUCE
GREAT RESULTS. WE STRIVE
FOR FAVORABLE REVIEWS
BUT IT IS HANCHER THAT
EXCITES THE WORLD.



The A-Team: Alan Swanson, Adam Pretorius, Tim Conroy
Blank & McCune The Real Estate Company
506 E. College St., Iowa City IA 52240 | 319-321-3129

RENÉE FLEMING AND HARTMUT HÖLL AT HANCHER AUDITORIUM OCTOBER 8, 2016

Photos: Miriam Alarcón Avila





10% OFF

bring in your ticket stub for a 10% off
discount on your meal

210 S. Dubuque Street, Iowa City, Iowa 52240



Appreciate
every
performance.

Visit Concept by Iowa Hearing Aid Centers for your free hearing screening today, so you can hear each production more clearly tomorrow.

All Hancher attendees will receive three years of free batteries with any Concept hearing aid purchase. Call **[319] 250-0515** to receive this special.





Chris
EARL

Nicole
AGEE

Kaj
O'MARA

Embracing the arts in Iowa's Creative Corridor.



Joe
WINTERS

Bruce
AUNE

Beth
MALICKI

Scott
SAVILLE

We are your 24 hour news source.





**Call me today for your
personal tour**

Steve Roe
Executive Director
MBA
Licensed Nursing Home
Administrator

Experience the same comforts
as you do in your own home...
and then some...

*We have some lovely
apartments available*

Oaknoll

An active LifeCare community since 1966

1 Oaknoll Court • Iowa City, IA 52246 • www.oaknoll.com • oaknoll@oaknoll.com



Delivering Excellence from the Ground Up

*Our name reflects our mission to provide a
personalized and professional real estate experience
whether your interests are downtown, on an acreage,
near the water, or any point in between!*

urbanacres.com

THE MANSION

FINE FURNISHINGS • INTERIOR DESIGN



Rediscover **THE MANSION'S** *versatile sense of style!*

Endless furniture, lighting, art, mirrors, area rugs and window treatment options, all hand-picked to meet your needs by our talented interior design staff.

Come in to see the latest items available off the floor or to explore the many options available via special order.



538 S GILBERT STREET, IOWA CITY
PH 319.338.2830 | M-F 9-5, SAT 10-2
WWW.THEMANSION.DESIGN

THANK YOU

Hancher thanks our Partners for their unwavering loyalty and crucial support. Their generosity enables us to bring the world's finest performing artists to our region.

FRANÇOIS M. AND DORIS E. ABBOUD

TERRY AND JOHANNA ABERNATHY

LEE AND KAZI ALWARD

LORETTA ANGERER

ANONYMOUS DONORS

ANONYMOUS FAMILY FOUNDATION

DALE AND LINDA BAKER

WAYNE AND NORA LEE BALMER

LOANNA (deceased) AND ORVILLE BLOETHE/
HLV COMMUNITY SCHOOL FUND

ROBERT F. AND JUDITH C. BOYD

DEB AND BILL BRANDT/BRANDT HEATING & AIR CONDITIONING

CAROLYN BROWN AND JERRY ZIMMERMANN

JOHN AND ELLEN BUCHANAN

DEBORAH K. AND IAN E. BULLION

WILLIS M. AND LINDA BROWN BYWATER

MARY K. CALKIN

JOHN AND KIM CALLAGHAN

JO CATALANO

CBI BANK AND TRUST

CHARLES RICHARD AND BARBARA S. CLARK

JAMES AND LORETTA CLARK

KATHERINE RATHE CLIFTON

JORDAN L. AND JANA E. COHEN

GARY AND CATHY COHN

RALPH H. AND MARCIA A. CONGDON

ANDY AND KARRIE CRAIG

JON AND JUDY CRYER

LINDA AND JOHN DASHER

BRAD AND PEGGY DAVIS

ELLIE AND PETER DENSEN

GEORGE AND LOIS EICHACKER

EVERYBODY'S WHOLE FOODS

DAN FELDT IN MEMORY OF NATALIE FELDT

ROBERT AND KARLEN FELLOWS

ED AND PATRICIA FOLSOM

BRUCE GANTZ AND MARY DEJONG GANTZ (deceased)

PAT GAURON

THE GAZETTE

M.C. GINSBERG "OBJECTS OF ART"/MARK AND VICKIE GINSBERG

SHAUN GLICK AND JESSICA TUCKER GLICK

RICHARD GLOSS AND HAL IDE

DARYL K. AND NANCY J. GRANNER

GEORGE A. AND BARBARA J. GRILLEY

BRENT HADDER

LEONARD AND MARLENE HADLEY



GARRY R. AND SUSANN K. HAMDORF
 HANCHER SHOWCASE/HANCHER GUILD
 HANCHER STUDENT ALUMNI
 ANNE HARGRAVE
 DONALD W. HEINEKING
 HILLS BANK AND TRUST COMPANY
 RAPHAEL AND JODI K. HIRSCH
 ARNOLD AND DARCY HONICK
 ALBERT B. AND JEAN M. HOOD
 H. DEE AND MYRENE HOOVER
 HOTELVETRO
 KENN AND JANIS HUBEL
 RICHARD AND JUDITH HURTIG
 IOWA CITY PRESS-CITIZEN
 IOWA HOUSE HOTEL
 PHILLIP E. AND JO LAVERA JONES
 WILLIAM AND SUSAN JONES
 KDAT
 ROGER AND GAYLE KLOUDA
 JOHN AND PATRICIA KOZA
 DR. KARL AND GAY KREDER
 TIM AND SARAH KRUMM
 PHILLIP AND MARY MARGARET LAINSON
 ROGER AND SARAH LANDE
 LENSING FUNERAL & CREMATION SERVICE
 DONALD AND RACHEL LEVY
 LITTLE VILLAGE
 ED AND ANN LORSON
 CASEY MAHON
 CORALVILLE MARRIOTT HOTEL & CONFERENCE CENTER
 PETER AND ANNE MATTHES
 WILLIAM MATTHES AND ALICIA BROWN-MATTHES
 MEARDON, SUEPPEL & DOWNER P.L.C.
 JOHN R. MENNINGER
 MIDWESTONE BANK
 SANDRA AND THOMAS MINTNER/NTI AMERICAS INC.
 REX MONTGOMERY (deceased)
 FRANK AND JILL MORRISS
 MORTENSON CONSTRUCTION
 THE NEUMANN FAMILY IN MEMORY OF DR. GEORGE R. NEUMANN
 NEUMANN MONSON ARCHITECTS, P.C.
 JEFFREY AND KRISTINE NIELSEN
 MARK AND LESLIE NOLTE
 ARTHUR AND GINGER NOWAK
 OAKNOLL RETIREMENT RESIDENCE
 KEVIN W. O'BRIEN/ MCDONALD'S RESTAURANTS
 MICHAEL W. O'HARA AND JANE ENGELDINGER
 WILLIAM H. AND BERTHA S. OLIN
 LAMONT D. AND VICKI J. OLSON
 OPN ARCHITECTS, INC.
 ROBERT A. OPPLIGER
 ORCHARD GREEN RESTAURANT & LOUNGE
 /BRYAN HERZIC AND SHELLY KOLAR HERZIC
 LLOYD (deceased) AND THELMA PALMER

Hills Bank
 and Trust Company
Member FDIC

PCmedia
 PRESS-CITIZEN MEDIA
PART OF THE USA TODAY NETWORK

hotelVetro
 THE UNIVERSITY OF IOWA
IOWA HOUSE HOTEL
 Iowa Memorial Union

104.5 KDAT
TODAY'S BEST MP3

LENSING
 Funeral & Cremation Service

lv.
LITTLE VILLAGE
CREMATION • FUNERAL • IOWA CITY AREA

M
MARRIOTT
 CORALVILLE

MEARDON, SUEPPEL & DOWNER P.L.C.
COMPREHENSIVE LEGAL SOLUTIONS
 MEARDONLAW.COM

MidWestOne
 Bank

Mortenson
 construction

NTI
 AUDIO

NEUMANN MONSON ARCHITECTS

Oaknoll

OPN
 ARCHITECTS

Orchard Green
 restaurant lounge

DOUGLAS AND LINDA PAUL
PELLI CLARKE PELLI ARCHITECTS
CHUCK AND MARY ANN PETERS
PHELAN, TUCKER, MULLEN, WALKER, TUCKER & GELMAN, L.L.P.

Pelli Clarke Pelli Architects

MARGARET R. POLSON
ALAN AND AMY REED
CHAD AND ERICA REIMERS
DAVID AND NOREEN REVIER
RIVERSIDE CASINO & GOLF RESORT
JEAN E. AND RENÉE ROBILLARD
TOM ROCKLIN



JACK AND NONA ROE

SCHEELS

JO ELLEN ROSS
JEFF AND SUSAN SAILORS
SCHEELS



Sheraton
IOWA CITY HOTEL

PEGGY SCHOLZ
STEVE AND JANIE SCHOMBERG
RALPH SCHULTZ FAMILY FOUNDATION
CARL AND JULIE SCHWESER
THOMAS R. SCOTT
SHERATON IOWA CITY HOTEL
LOUIS P. AND PATRICIA A. SHIELDS
SHIVE-HATTERY ARCHITECTURE + ENGINEERING
WILLIAM AND MARLENE W. STANFORD
RICHARD AND MARY JO STANLEY
EDWIN AND MARY STONE
SUE STRAUSS

SHIVEHATTERY
ARCHITECTURE + ENGINEERING

LYSE STRNAD AND TOM LEAVENWORTH
W. RICHARD AND JOYCE SUMMERWILL
ALAN AND LIZ SWANSON
CHUCK AND KIM SWANSON



TALLGRASS BUSINESS RESOURCES
TIM TERRY AND GRETCHEN RICE
KEITH AND NANCY THAYER
JAMES AND ROBIN TORNER



TOYOTA/SCION OF IOWA CITY AND ABRA AUTO AND BODY GLASS
JEFFREY R. AND TAMMY S. TRONVOLD

UNIVERSITY OF IOWA COMMUNITY CREDIT UNION
UNIVERSITY HOUSING & DINING
DOUGLAS AND VANCE VAN DAELE
RHODA VERNON



STEPHEN AND VICTORIA WEST
WEST MUSIC COMPANY
GARY A. AND LADONNA K. WICKLUND
ELLEN M. WIDISS



DEREK AND PAMELA WILLARD
DOROTHY M. WILLIE
HERBERT A. AND JANICE A. WILSON
WILSON FAMILY FOUNDATION



BETTY WINOKUR
SHERWOOD (deceased) AND SARA WOLFSON
DEBORAH AND RODNEY ZEITLER

The Hancher Showcase—staffed and managed entirely by volunteers in the Hancher Guild—is filled with unique, high-quality items that you'll want for yourself or when you need a special gift.

Proceeds of all Showcase sales are used to support Hancher's educational programs.

The Showcase opens one hour prior to a performance's starting time and remains open through and after the performance.

The Showcase is also open on Wednesdays, from 10 am to 1 pm, and on Thursdays, from 4:30 to 7:30 pm, while the Stanley Café is open to the public for Thursday Nights at Hancher.



Above: A nighttime scene of Hancher Auditorium hand-painted on a glass ornament, available at the Hancher Showcase.

HOURS:

- One hour before performances, at intermission, and after performances
- Wednesdays 10 am–1 pm
- Thursdays 4:30–7:30 pm

Studio | 1BR | 2BR | Respite

*Brown
Deer Place*
RETIREMENT LIVING & MEMORY CARE

1500 First Avenue North
Coralville, Iowa 52241
(319) 337-6320
www.BrownDeerPlace.com

Embrace Every Moment

At Brown Deer Place we are devoted to helping you and your loved one embrace every moment. We are staffed by professionals who honor residents' individual needs and preferences. Our community has just undergone an extensive remodeling project, so make plans to tour soon. Call 319-337-6320 to schedule your visit!



Whether the first act or the curtain call, dine or stay in style at the Coralville Marriott® Hotel & Conference Center. With close proximity just minutes to Hancher Auditorium, you can easily turn your evening outing into an unforgettable event.

**SHOW YOUR HANCHER
TICKET STUB AND
RECEIVE 15% OFF
YOUR FOOD ORDER
AT EDGEWATER GRILL.**

Valid September 1st – July 31st, 2017.

**JOIN US FOR A
MOUTHWATERING
PERFORMANCE.**

CORALVILLE MARRIOTT HOTEL & CONFERENCE CENTER

300 EAST 9TH STREET | CORALVILLE, IOWA 52241
319-688-4000 | CORALVILLEMARRIOTT.COM



**MARRIOTT
CORALVILLE**

A TRIP FOR
MUSIC LOVERS

SPRING BREAK — on the — French Riviera

MONTE CARLO | CANNES | ST. TROPEZ

9
days

March 21-29, 2017

Experience the food, art, and music that have made the
Riviera the playground for the rich and famous!

Details at www.kcck.org/travel
Please contact Lisa Baum at:
319.398.5421 or lisa@kcck.org

kcck
jazz 88.3

IOWA CITY'S BEST MOVIE THEATER YOUR HOME FOR INDIE CINEMA

*VOTED "BEST OF THE AREA" BY PRESS-CITIZEN READERS IN 2015 AND 2014

FINE
WINE



CRAFT
BEER



FILM SCENE



TASTY IOWA
POPCORN!

IOWA CITY'S NONPROFIT CINEMA
ON THE PED MALL • WWW.ICFILMSCENE.ORG



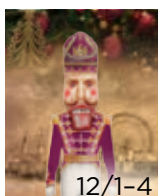
HANCHER AUDITORIUM UPCOMING EVENTS



10/28

10/28 Laurie Lewis and the Right Hands

11/5 *Pomp, Brass, and Lunacy!*
Tomáš Kubínek, Wycliffe Gordon,
Orchestra Iowa, and University Choirs



12/1-4

11/11 Chucho Valdés Joe Lovano Quintet

12/1-4 The Joffrey Ballet, *The Nutcracker*

12/6 Emanuel Ax

12/9 Asleep at the Wheel
Merry Texas Christmas Y'all!



12/6

TICKETS

Order online hancher.uiowa.edu

Call (319) 335-1160 or 800-HANCHER

Accessibility Services (319) 335-1158

\$10
FOR MOST
STUDENT
TICKETS

Individuals with disabilities are encouraged to attend all University of Iowa sponsored events. If you are a person with a disability who requires a reasonable accommodation in order to participate in this program, please contact Hancher in advance at (319) 335-1158.

STANLEY CAFÉ

- Full cafe and bar open two hours prior to showtime
- Second floor bar open one hour following the performance



UNIVERSITY
CATERING
SERVING OUR
CAMPUS & COMMUNITY

HANCHER



University of Iowa Stead Family Children's Hospital

Our kids. Our **new** hospital.

The new University of Iowa Stead Family Children's Hospital opens in December 2016. This is your chance for a once-in-a-lifetime sneak peek during our community open house! Please join us for tours of the new hospital, light refreshments, and special activities. More information available at ournewhospital.com.

Dates: November 5 and 6, 2016

Times: 11 a.m. to 6 p.m. each day

Location: UI Stead Family Children's Hospital (Iowa City)





PATEK PHILIPPE

GENEVE

Begin your own tradition.

You never actually own a Patek Philippe.
You merely take care of it for the next generation.



Annual Calendar Ref. 5205G

m.c. ginsberg

JEWELRY AND OBJECTS OF ART

110 East Washington Street · Iowa City
319-351-1700

IN THE HEART OF THE OLD CAPITOL CULTURAL DISTRICT